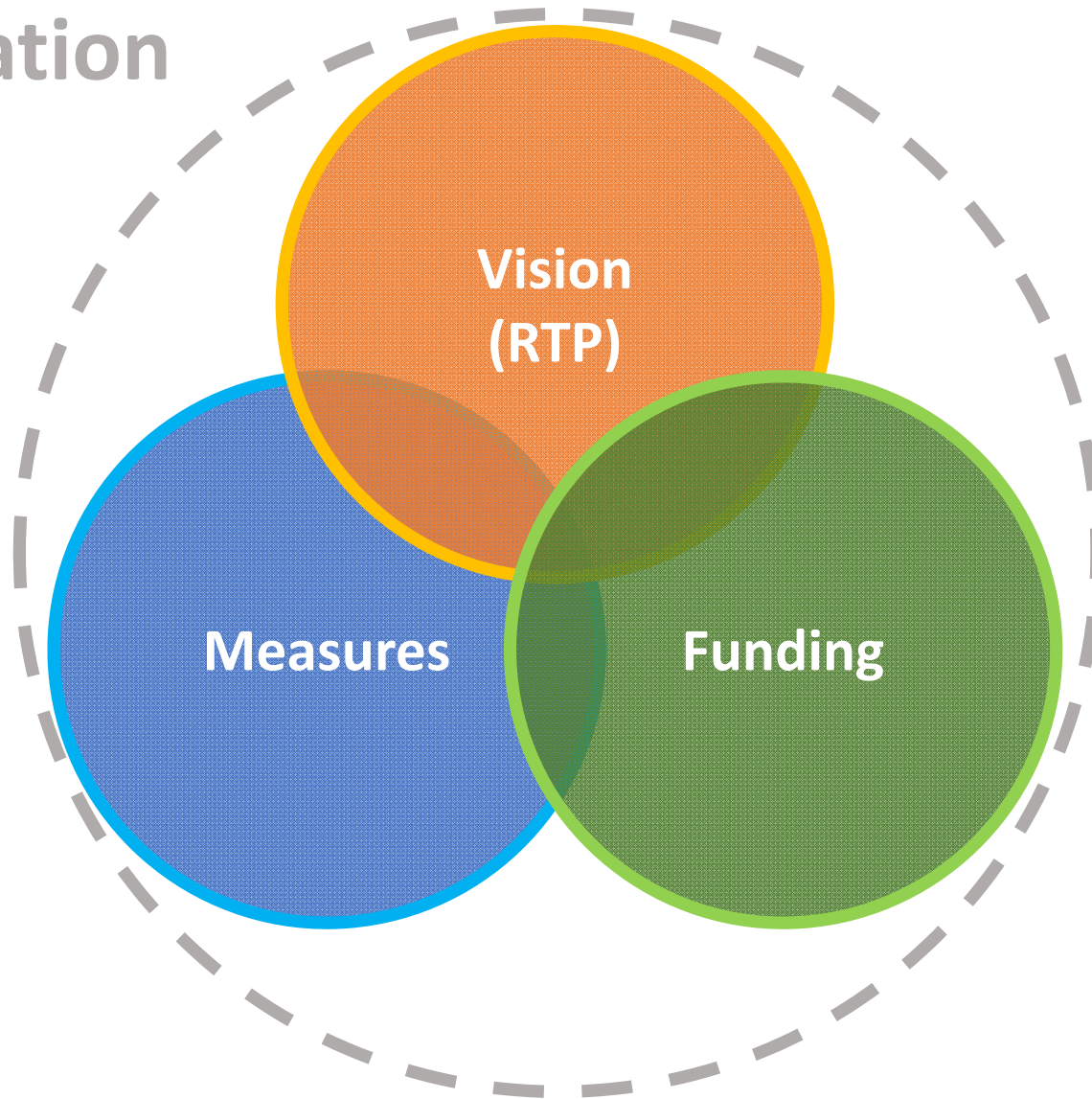


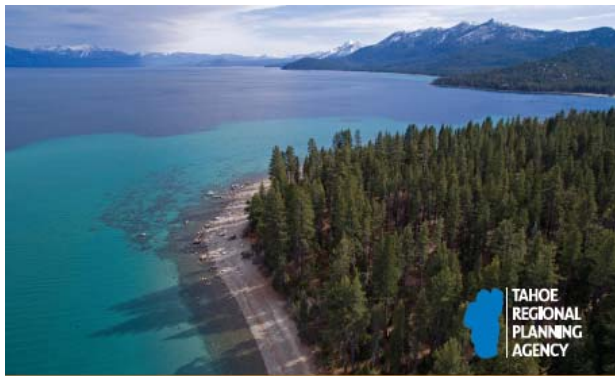
# Transportation Measures

TAHOE REGIONAL PLANNING AGENCY  
FEBRUARY 8, 2017

# Transportation Strategic Initiative



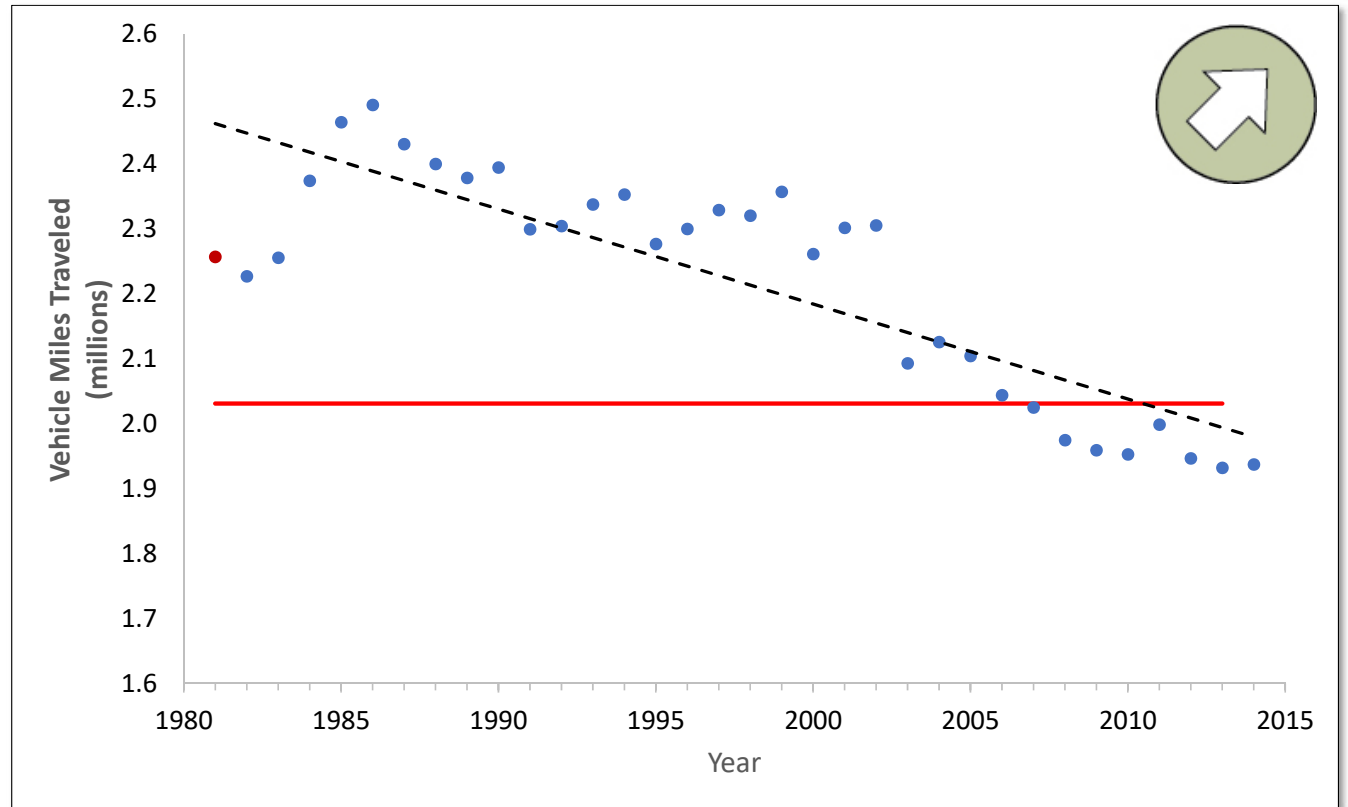
# 2015 Threshold Evaluation



## 2015 THRESHOLD EVALUATION

TAHOE REGIONAL PLANNING AGENCY

*lake tahoe*



# Proposed uses of VMT in TVAL feedback

Fine sediment transport from roads (mid-lake clarity)

Congestion

Visitor experience/Quality of life for residents

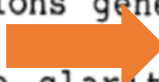
Impacts associated with traffic

Noise

Air quality (particulate matter)

# Origin of the VMT standard



Nitrate Deposition. Nitrates deposited from the atmosphere originate from automobile emissions generated within the Basin and from sources upwind of the  Nitrates contribute to algal growth which affects the clarity of Lake Tahoe. The corresponding threshold is to:

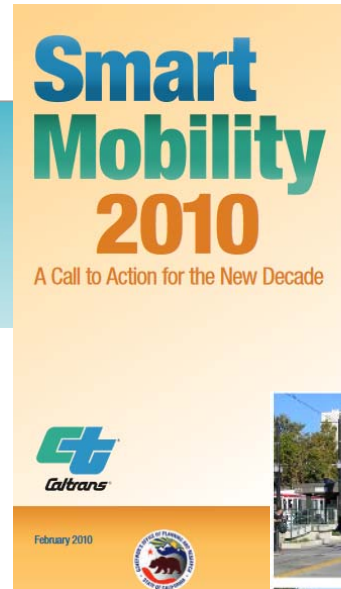
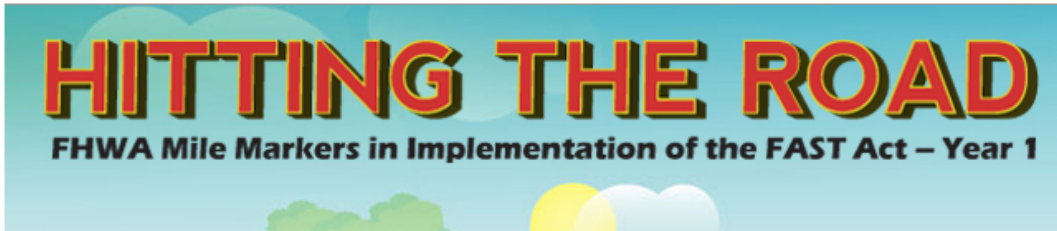
Reduce the transport of nitrates into the Basin and reduce oxides of nitrogen ( $\text{NO}_x$ ) produced in the Basin consistent with the water quality thresholds

**POLICY:** It shall be the policy of the TRPA Governing Board in the development of the Regional Plan to reduce vehicle miles of travel in the Basin by 10 percent of the 1981 base year values.

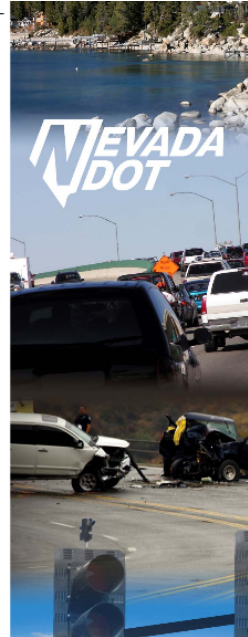
1. Basis for Recommendation. Initial studies have shown that airborne sources of nitrate contribute significant quantities of this element to the lake and land surfaces. In order to attain the water quality thresholds, a reduction in atmospheric deposition of inorganic nitrogen will be required.

# Legislation and guidance

Fixing America's Surface Transportation Act or "FAST Act"



NDOT  
Statewide  
Integrated  
Transportation  
Reliability  
Program



Technical Memorandum  
No. 6 - Performance  
Measurement Plan



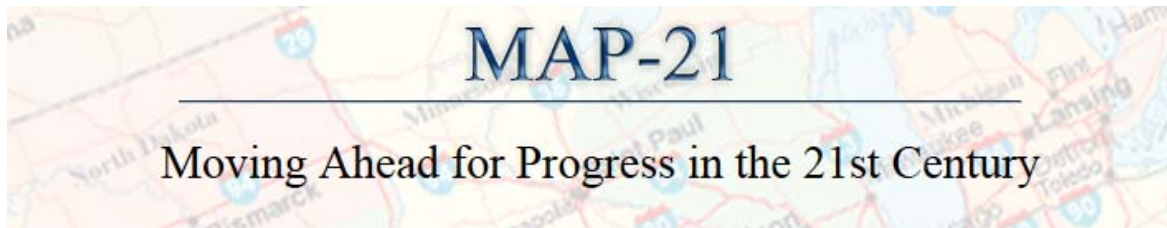
*California*  
LEGISLATIVE INFORMATION

Senate Bill No. 375

CHAPTER 728

Senate Bill No. 743

CHAPTER 386



# Transportation Measures Task force

## **Identified Needs:**

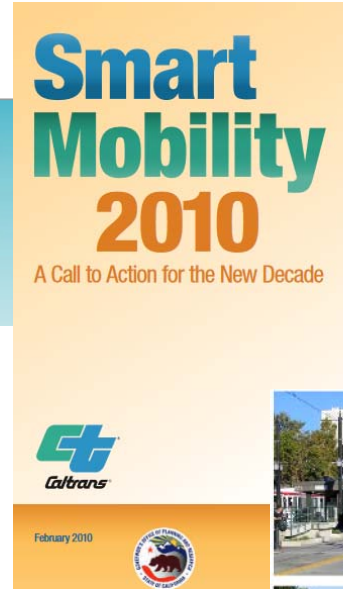
- Compile information, concepts, case studies, and engage experts
- Identify indicator options and best practices currently employed to measure transportation related concerns
- Provide a forum for discussion of transportation measures
- Provide assistance to the Governing Board and Staff, if requested, as the Board further refines the strategies and develops measurable indicators to assess implementation and progress

## **Proposed product:**

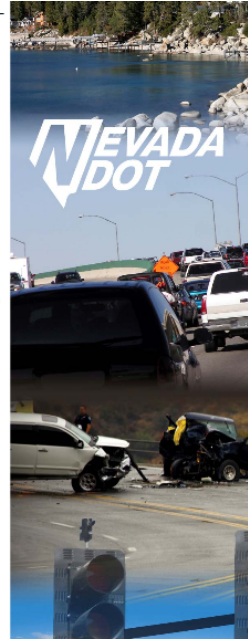
- White paper on best practices in transportation measures

# Legislation and guidance

Fixing America's Surface Transportation Act or "FAST Act"



NDOT  
Statewide  
Integrated  
Transportation  
Reliability  
Program



Technical Memorandum  
No. 6 - Performance  
Measurement Plan



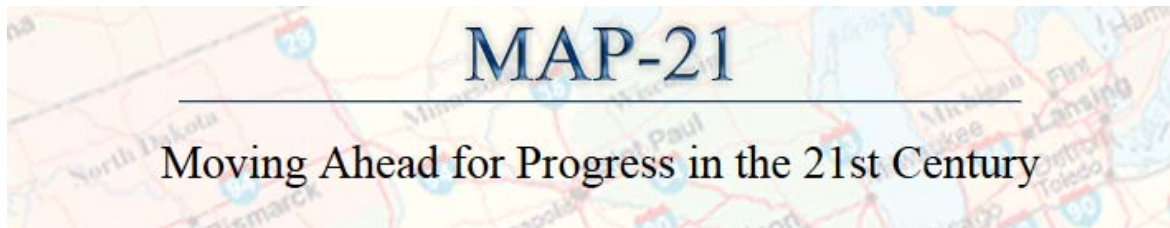
*California*  
LEGISLATIVE INFORMATION

Senate Bill No. 375

Senate Bill No. 743

CHAPTER 728

CHAPTER 386





**QUESTIONS?**

