

tahoe
SUSTAINABLE DEVELOPMENT

45 TAHOE REGIONAL PLANNING AGENCY YEARS OF PROGRESS

Review and Recommendation on Work Plan for the Transportation Measures Working Group

Advisory Planning Commission
March 8, 2017

tahoe
SUSTAINABLE DEVELOPMENT

45 TAHOE REGIONAL PLANNING AGENCY YEARS OF PROGRESS

Transportation Strategic Initiative

The diagram consists of three overlapping circles: a yellow circle at the top labeled 'Vision (RTP)', a blue circle at the bottom left labeled 'Measures', and a green circle at the bottom right labeled 'Funding'. All three circles are enclosed within a larger dashed white circle.

tahoe
SUSTAINABLE DEVELOPMENT

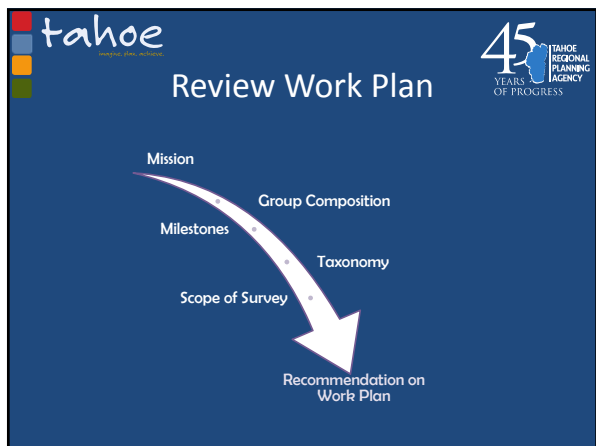
45 TAHOE REGIONAL PLANNING AGENCY YEARS OF PROGRESS



2015 Threshold Evaluation


The graph plots 'Vehicle Miles Traveled (millions)' on the y-axis (ranging from 1.6 to 2.6) against 'Year' on the x-axis (ranging from 1980 to 2015). A dashed blue trend line shows a steady decline from approximately 2.5 million VMT in 1980 to about 1.9 million VMT in 2015. A solid red horizontal line is drawn at the 2.0 million VMT mark, representing a threshold. A small inset image shows a scenic view of a lake and mountains.











Mission



Survey the transportation landscape to compile data and concepts on transportation measures and prepare a state of the practice white paper that can be used to inform future transportation policy decisions, including those related to congestion management.

Working Group Composition

The transportation measures working group shall be comprised of the following representatives, and all members of the public are invited to attend working group meetings and participate in discussions:

- All Advisory Planning Commission (APC) members;
- One representative from the environmental community; and,
- One representative from the business and tourism community.

Milestones

- ▶ March: Work Plan Recommendation
- ▶ April: Reg. Plan Perf. Measures & Threshold Standards, Baseline Federal/State Requirements
- ▶ May: Survey of the Landscape within Taxonomy, Review List of Measures for Draft White Paper
- ▶ June: Draft White Paper
- ▶ July: Final White Paper

tahoe **Taxonomy** **45** TAHOE REGIONAL PLANNING AGENCY YEARS OF PROGRESS

1. **Air Quality** (e.g. emissions, GHG)
2. **Water Quality** (e.g. pollutant loading)
3. **Reliance on Automobile** (e.g. mode share, public transit ridership, miles of non-auto paths)
4. **Safety** (e.g. crashes, fatalities)
5. **Congestion** (e.g. levels of service)
6. **Quality of Life** (e.g. affordability index, travel time to work, visitor experience)
7. **State of Good Repair** (e.g. infrastructure condition)

tahoe **Scope of Survey: Engagement and Outreach** **45** TAHOE REGIONAL PLANNING AGENCY YEARS OF PROGRESS

- **Federal**
 - o Federal Highways (FHWA)
 - o Federal Transit Administration (FTA)
- **State**
 - o California (Caltrans)
 - o Nevada (NDOT)
 - o Florida (FDOT)
 - o Oregon (ODOT)
 - o Ohio (ODOT)
 - o Tennessee (TDOT)
- **Local Planning Organizations**
 - o Broward County
 - o City of Aspen
 - o Santa Cruz
- **Regional Transportation Planning Organizations**
 - o Washoe RTC
 - o Southern Nevada RTC
 - o Carson Area MPO
 - o Sacramento Area Council of Governments (SACOG)
 - o San Francisco Metropolitan Transportation Commission
 - o San Diego Association of Governments (SANDAG)
 - o Puget Sound Regional Council (PSRC)
 - o Chicago Metropolitan Agency for Planning (CMAP)
- **Other Organizations**
 - o Transportation for America
 - o Texas Transportation Institute (TTI)

tahoe **Work Plan Recommendation** **45** TAHOE REGIONAL PLANNING AGENCY YEARS OF PROGRESS

Mission

Group Composition

Milestones

Taxonomy

Scope of Survey

Recommendation on Work Plan
