

# Spoooner Front Country Improvement Project

## Improving Recreation Facilities



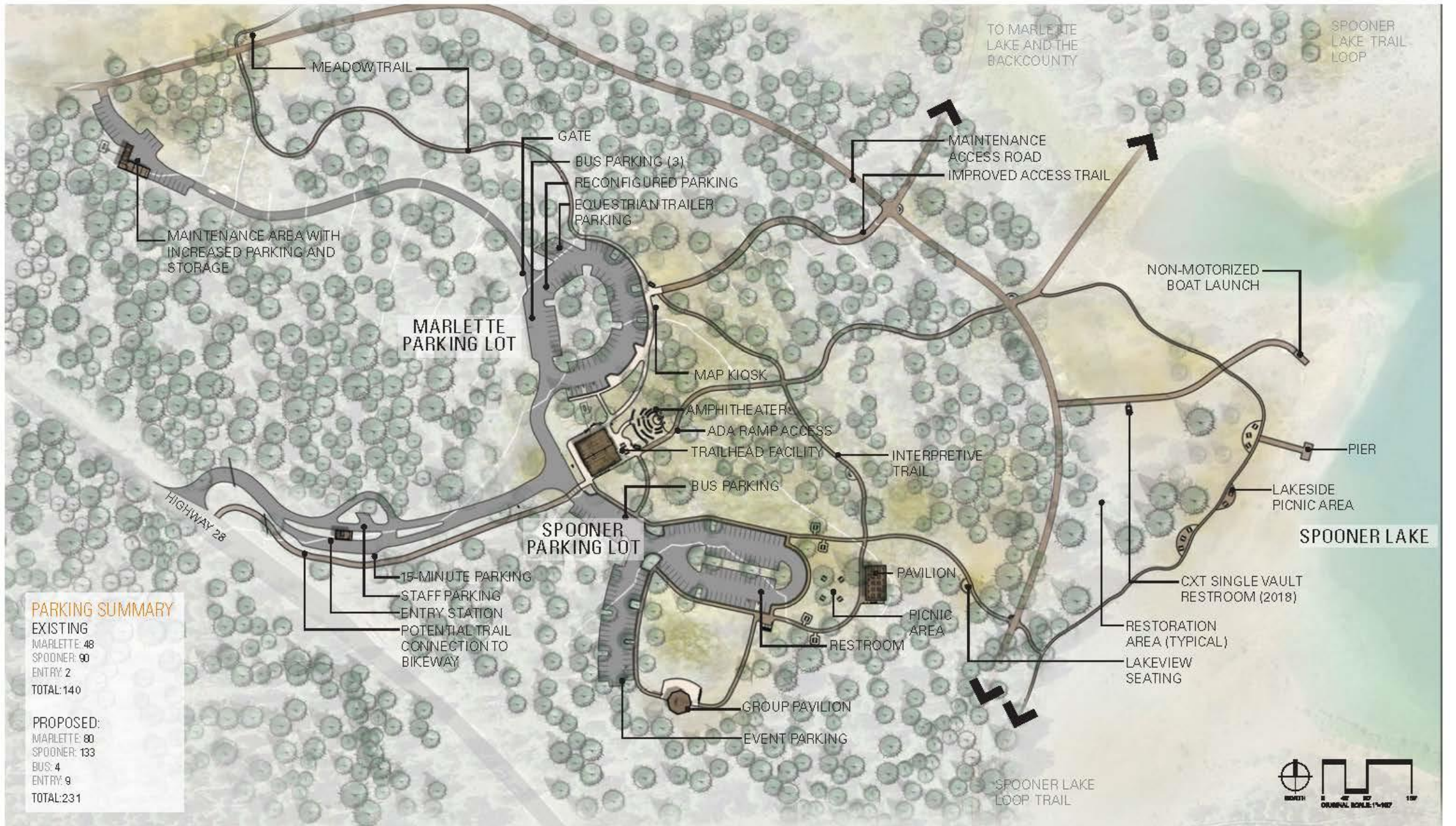
**LAKE TAHOE**  
ENVIRONMENTAL  
IMPROVEMENT  
PROGRAM



Spoooner Lake State Park  
Front Country Improvement Project  
Improving Recreation Facilities



**LAKE TAHOE**  
ENVIRONMENTAL  
IMPROVEMENT  
PROGRAM

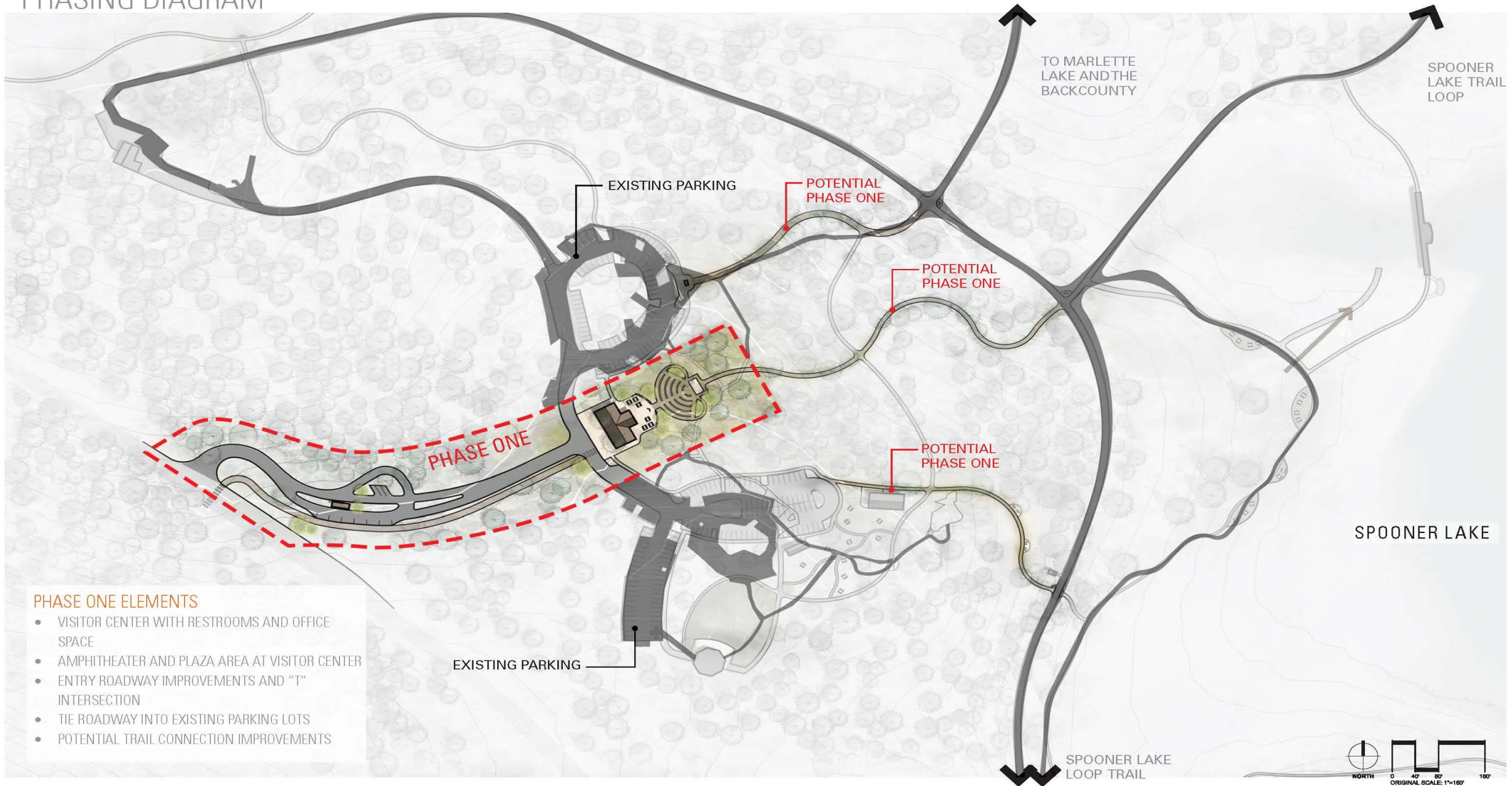


**PARKING SUMMARY**

EXISTING	
MARLETTE:	48
SPOONER:	90
ENTRY:	2
<b>TOTAL:</b>	<b>140</b>
PROPOSED:	
MARLETTE:	80
SPOONER:	133
BUS:	4
ENTRY:	9
<b>TOTAL:</b>	<b>231</b>



# PHASING DIAGRAM



## PHASE ONE ELEMENTS

- VISITOR CENTER WITH RESTROOMS AND OFFICE SPACE
- AMPHITHEATER AND PLAZA AREA AT VISITOR CENTER
- ENTRY ROADWAY IMPROVEMENTS AND "T" INTERSECTION
- TIE ROADWAY INTO EXISTING PARKING LOTS
- POTENTIAL TRAIL CONNECTION IMPROVEMENTS



DESIGNWORKSHOP  
WARD ARCHITECTURE & PLANNING  
YOUNG

SPOONER LAKE AND BACKCOUNTRY TRAILHEAD  
SPOONER FRONTCOUNTRY IMPROVEMENTS  
NEVADA DIVISION OF STATE PARKS

# VISITOR CENTER AMPHITHEATER PERSPECTIVE



**SPOONER FRONTCOUNTRY**  
NEVADA DIVISION OF STATE PARKS

**DESIGNWORKSHOP**  
JULY 31, 2017

# WAYFINDING SYSTEM



## MAP AND INTERPRETIVE KIOSK

Located at major trail intersections and important locations.



## VEHICULAR DIRECTIONAL SIGN

Located along the vehicular circulation system and at intersections.



## ENTRY SIGNAGE

Located at the main entry and at the visitor center.



## PEDESTRIAN DIRECTIONAL SIGN

Located along the pedestrian circulation system and at trail intersections.



## CONCEPT INSPIRATION

The wayfinding family was inspired by the historic lumber yards fed by the Virginia Gold Hill Water system from Marlette and Spooner Lake. The rough milled lumber and staggered lengths recall the massive mill works and transport of lumber from the Spooner region to the Comstock mines.

The family also features cor ten steel with black bold lettering, drawing from steels supports and tools used in the historic logging operations while providing a low maintenance and long lasting material.





VIDEO

Questions?

