

Threshold Update Initiative

TRPA ADVISORY PLANNING COMMISSION
AGENDA ITEM V.A
NOVEMBER 8, 2017



A Voice for Lake Tahoe

Thresholds Update Initiative

Challenge:

- The majority of the standards were adopted in 1982, based on science that is now over 40 years old.
- Cost of comprehensive monitoring is beyond the resources of the agency and its partners



Goals:

- Relevant and scientifically rigorous threshold standards
- A cost-efficient, feasible, and informative monitoring and evaluation plan
- A robust and repeatable process for standard review



Typology of change



Threshold standards

e.g. 2012 change in standard for 8-hour Carbon Monoxide change from 9 to 6 parts per million to align with state standards



Monitoring and evaluation

e.g. Data collection and method used to assess change

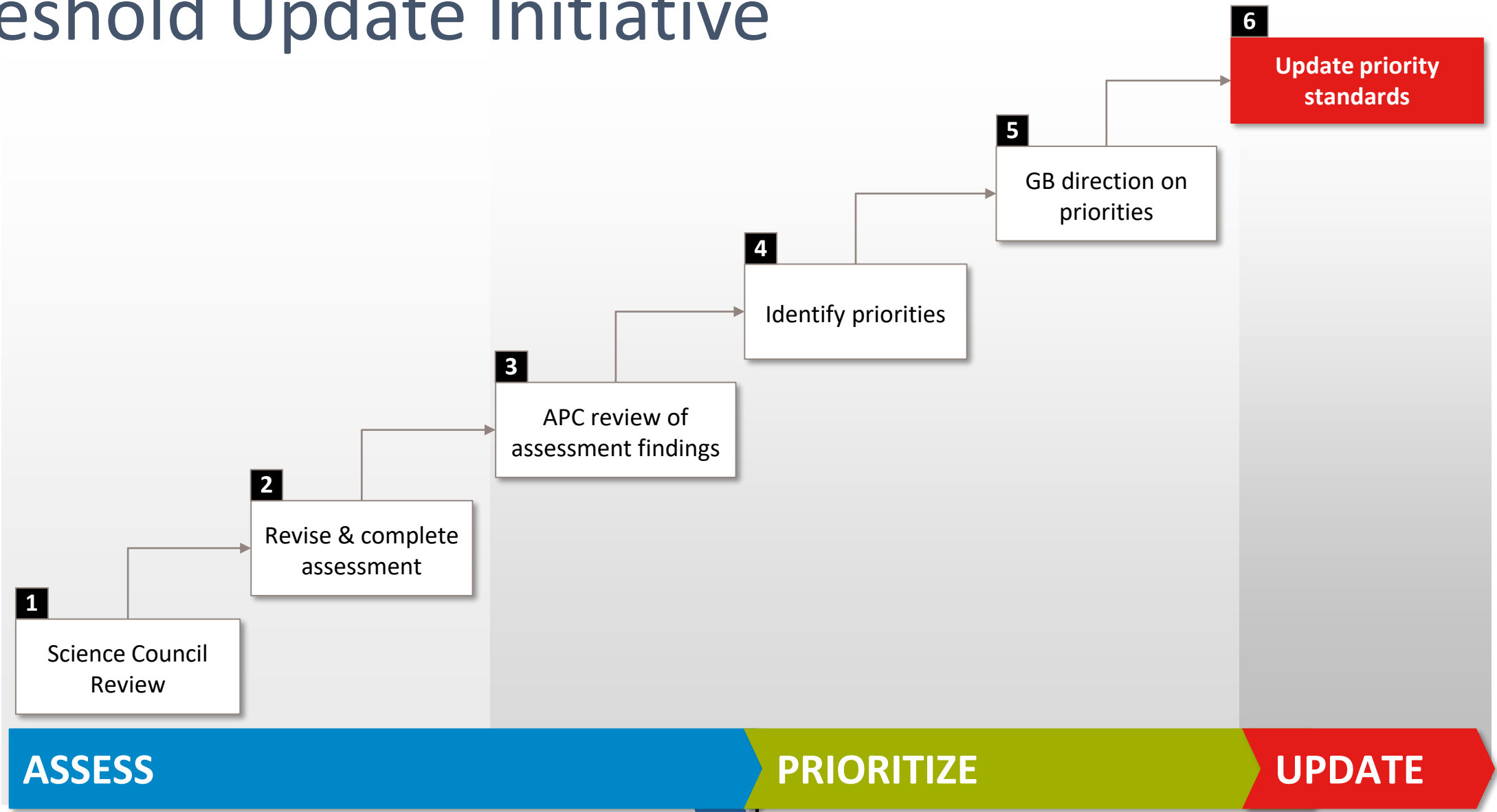


Reporting and communication

e.g. Threshold dashboard, 2019 threshold evaluation format revisions



Threshold Update Initiative



PLANNING
AGENCY

A Voice for Lake Tahoe

Threshold Assessment History



VERSION 1.7
MAY 8, 2017

THRESHOLD ASSESSMENT METHODOLOGY

THRESHOLD UPDATE INITIATIVE

TAHOE REGIONAL PLANNING AGENCY



Draft assessment included in 2015 Threshold Evaluation Report



Tahoe Science Advisory Council review and feedback on the standard assessment



Assessment peer reviewed



Standard assessment revision



Assessment Findings

- Room for improvement in all areas
- No standard received a perfect score
- 39% (69 of the 178) were found to be both specific and measurable
- 28% (49 of the 178) were found to be specific, measurable and based on settled/solid science



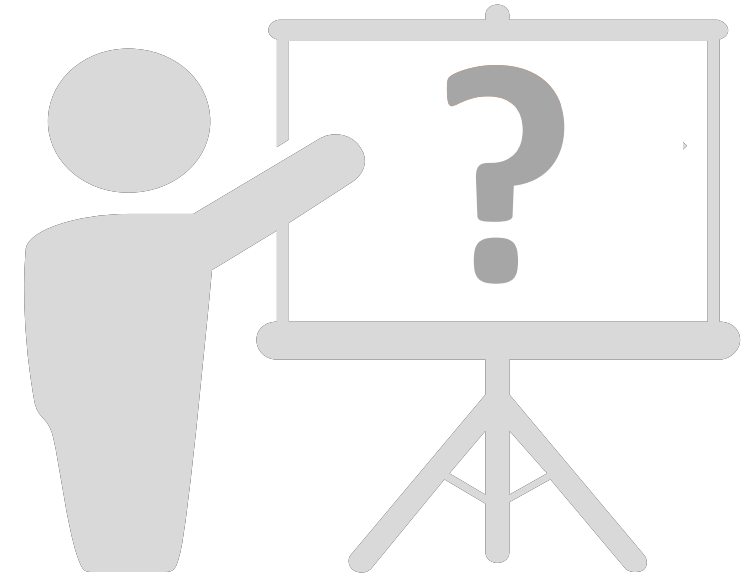
A Voice for Lake Tahoe



Relevancy



Relevant to whom ?



Relevant for what?

Relevant for the partnership to review at this time?



Relevancy

- Air Quality
- Fisheries
- Noise
- Recreation
- Scenic
- Soil Conservation
- Vegetation
- Water Quality
- Wildlife



- Air Quality (VMT)
- Fisheries
- Noise
- Recreation
- Scenic
- Soil Conservation (SEZ)
- Vegetation (Forest Health)
- Water Quality
- Wildlife



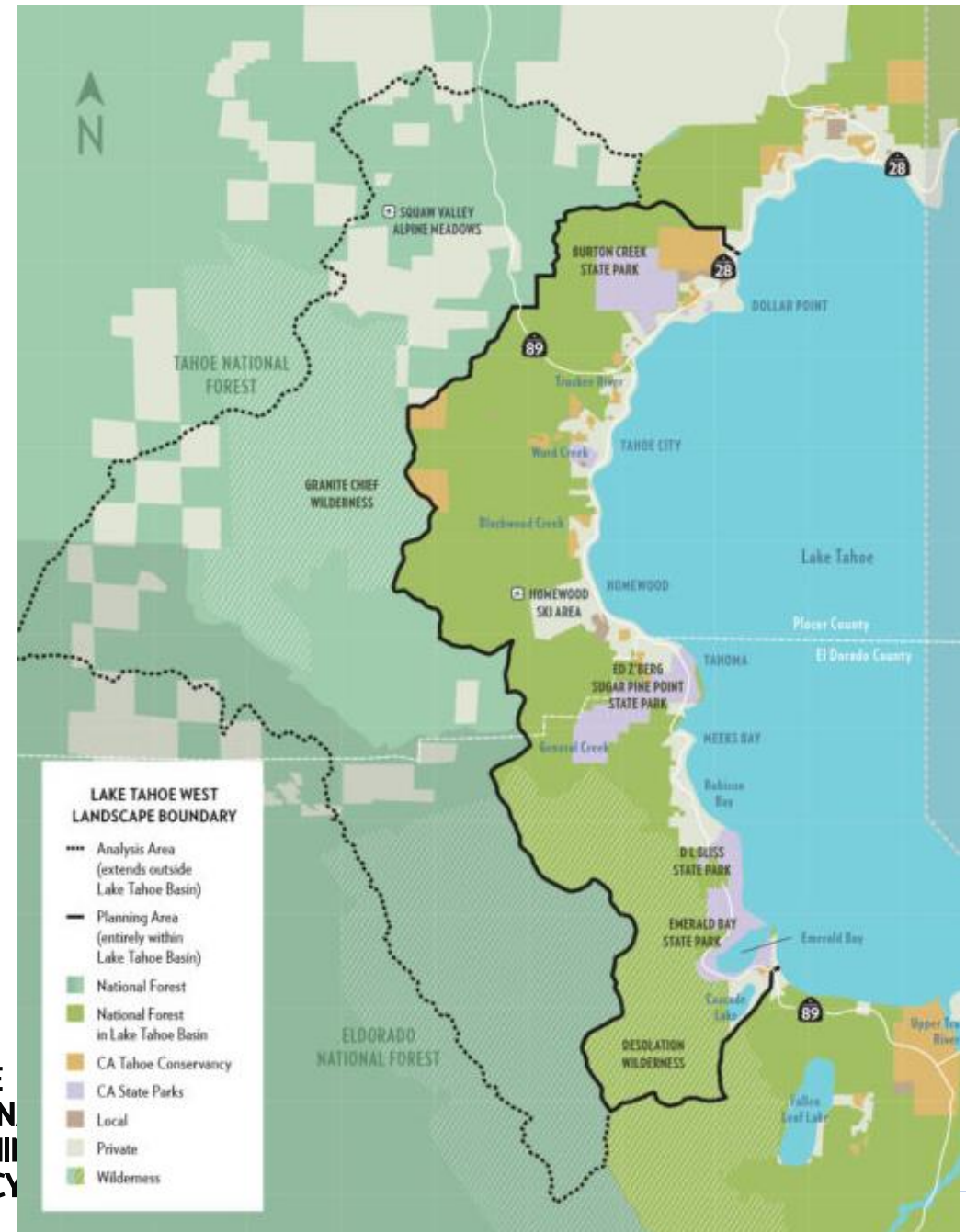
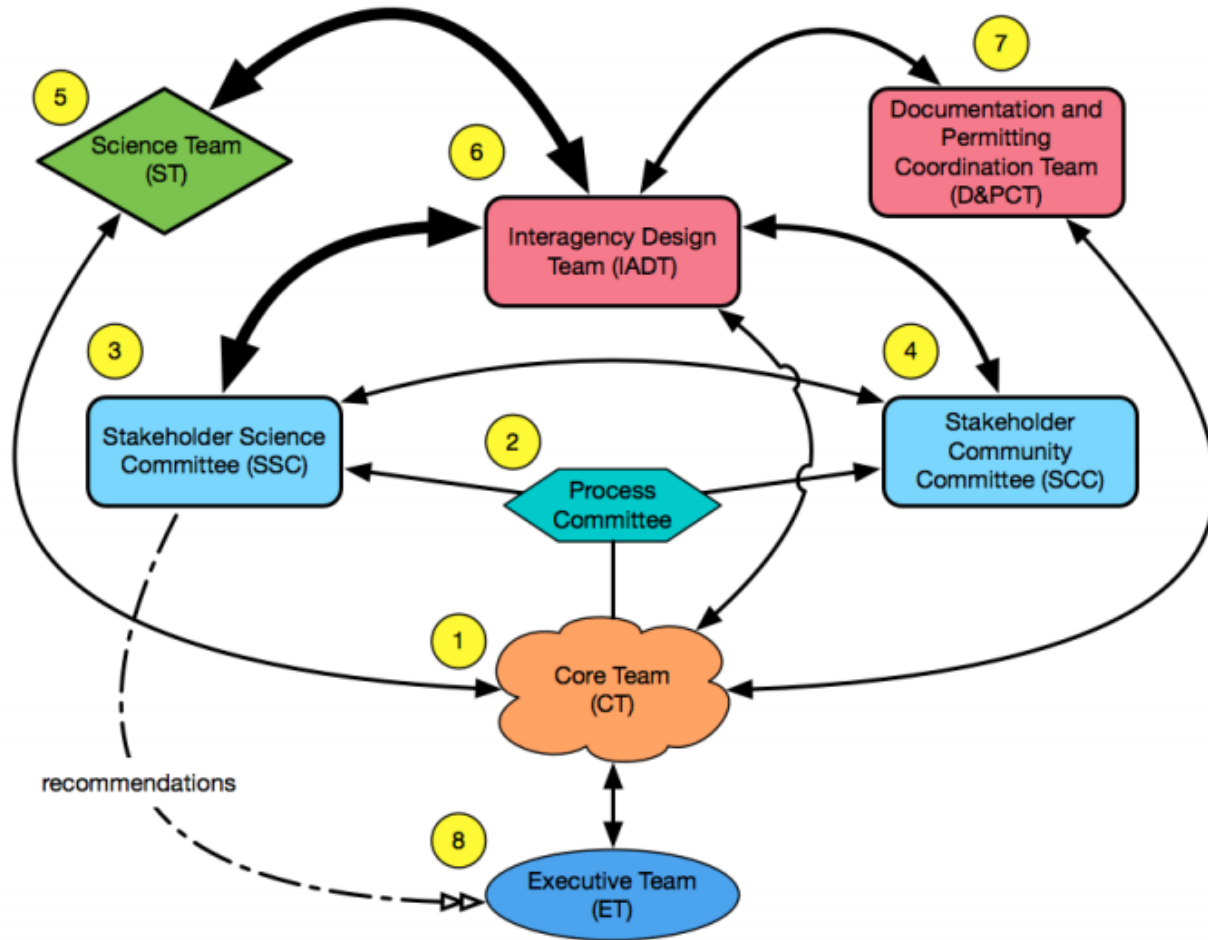
Vegetation (Forest Health)

- How does standard evaluation inform management?
- Reflect latest science?



Vegetation (Forest Health)

Lake Tahoe West Restoration Partnership



Recreation

“So TRPA recreation management is guided by these two statements?”

I’m not sure you are inviting my comment on those (they are likely beyond the scope of this report) but I do have some concerns.....

First there is no mention of natural, cultural, and historic resource protection from recreational visitation....

...is this infrastructure sustainably designed and managed and what condition is it in..

More importantly, these statements are not written in a manner that allows a clear empirical evaluation of management success.....

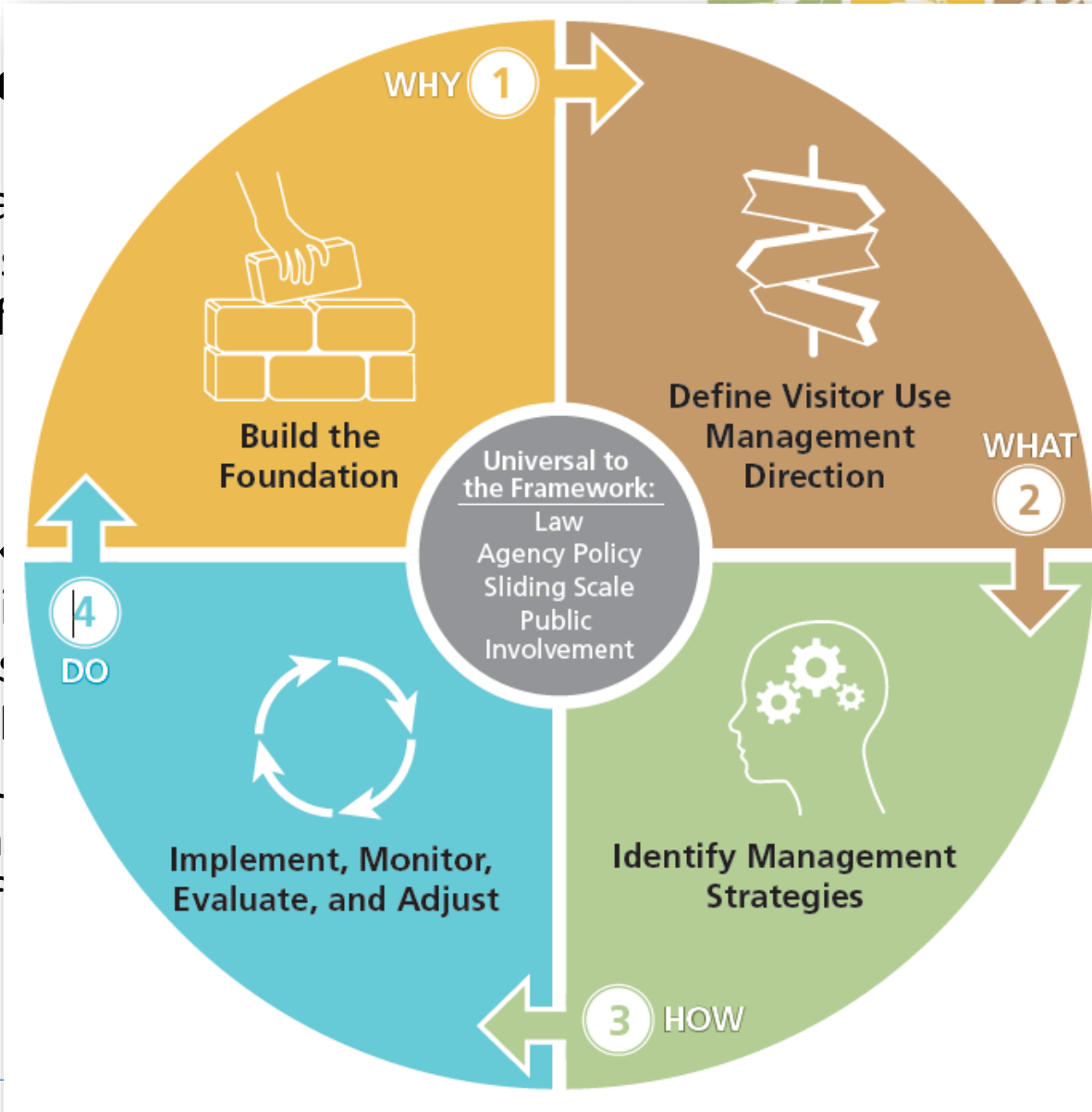
– 2015 Peer Reviewer



Recreation

Sustainable recreation

- US Forest Service
- Tahoe Regional Plan
- Nevada State Parks
- Nevada Division of Parks
- California State Parks
- Tahoe Fund
- City of South Lake Tahoe
- League to Save Lake Tahoe
- Tahoe Transportation Council
- Lake Tahoe Visitors Foundation
- North Lake Tahoe Conservancy
- Tahoe City Public Utility District
- Sierra Nevada Conservancy
- Tahoe Chamber of Commerce



AGEMENT

AGEMENT FRAMEWORK
Providing Sustainable
Outdoor Recreation

Edition 1

Air Quality: VMT

1982

- Reduce NOx emissions and control algae growth

2017

- Congestion
- Quality of life
- Fine sediment
- Road wear
- Visitor experience



Air Quality: VMT

Transportation Performance Measures State of the Practice

Prepared by:

Tahoe Regional Planning Agency
PO Box 5310, Stateline, NV 89449

Contacts:

Michelle Glickert, Principal Transportation Planner, (775) 589-5204, mglickert@trpa.org

Dan Segan, Principal Natural Resources Analyst, (775) 589-5233, dsegan@trpa.org

www.trpa.org/transportation

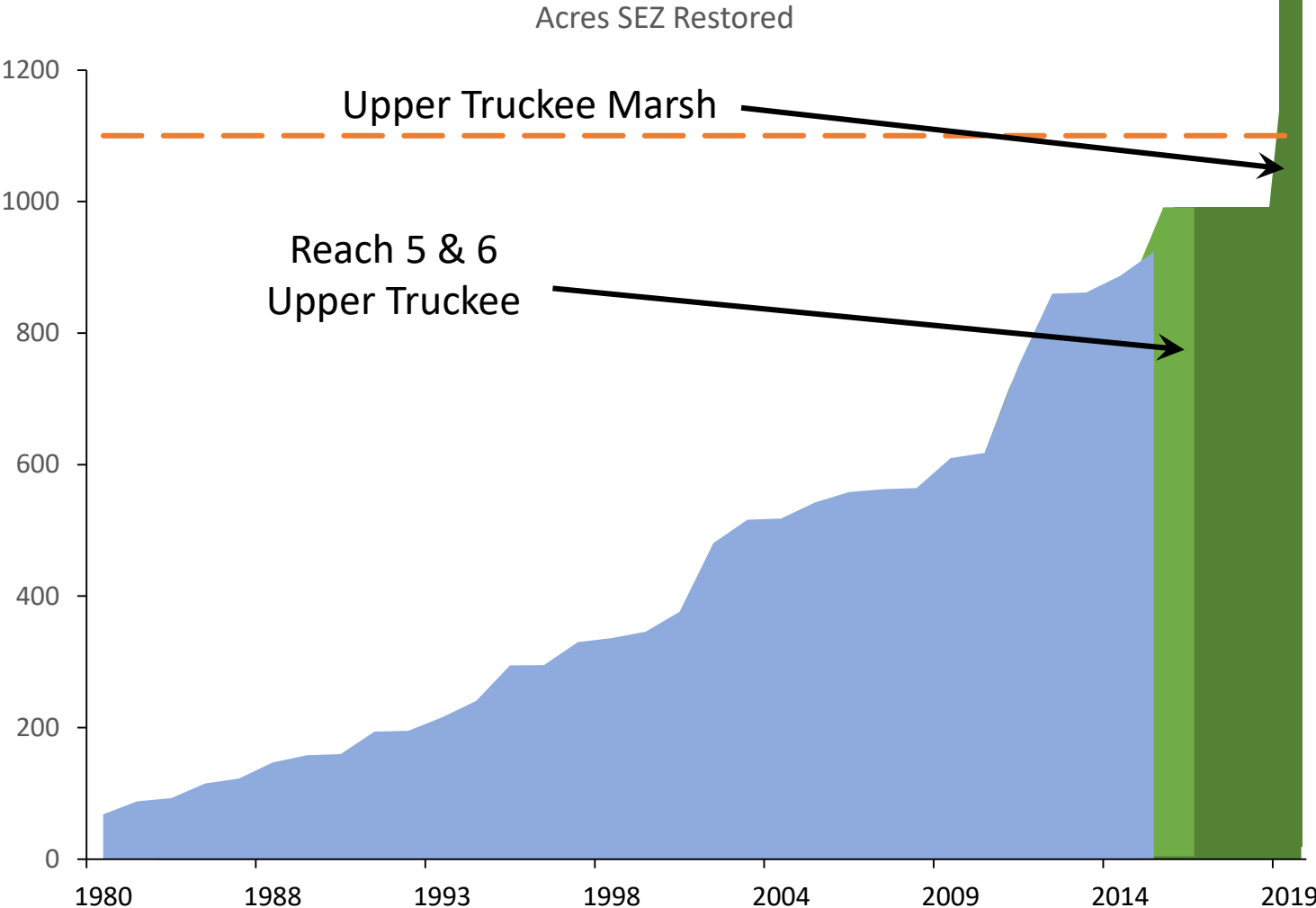
August 9, 2017



- APC Transportation Measures Working Group
 - State of the Practice Report
- Bi-State Consultation
 - Policy alignment
- Transportation Performance Management
 - Project prioritization
- Science Advisory Council
 - Water quality – VMT



Stream Environment Zones



“In summary, the present approach to evaluating the condition and the improvement in SEZ’s is an overly blunt instrument with no apparent scientific basis beyond “more is better.” The science has truly advanced in the last 40+ years”
– 2015 Peer Reviewer



Stream Environment Zones

The image shows a screenshot of a memorandum and a web-based map interface. The memorandum is from the Tahoe Regional Planning Agency, dated March, addressed to the Tahoe Interagency Executive Steering Committee. It discusses Stream Environment Zones (SEZs) and mentions a grant from the EPA to TRPA. The map interface, titled 'EcoAtlas', shows a map of the Lake Tahoe region with various layers and legends. A legend for 'CRAM' (California Regional Assessment Method) is visible, listing 'CRAM Assessment Sites', 'CRAM State Reference Network Sites', and 'CRAM Self-Training Sites'. The map also shows 'Aquatic Resources' and 'Condition' layers.

TAHOE REGIONAL PLANNING AGENCY
Mail: PO Box 5310, Stateline, NV 89449-5310
Location: 128 Market Street, Stateline, NV 89449
Contact: Phone: 775-588-4547, Fax: 775-588-4527, www.trpa.org

Memorandum
TO: Tahoe Interagency Executive Steering Committee
FROM: Shane Romsos (TRPA), Paul Nielsen (TRPA), Hannah Schembri (Lahontan), Sue Norman (USFS-LTBMU), Woody Loftus (NRCS), Jacques Landy (EPA), and Tricia York (CTC)
DATE: March
SUBJECT: Summ Zones

Around July 2010, the Tahoe Interagency Executive Steering Committee outlined steps necessary to address Stream Environment Zones (SEZs) at Lake Tahoe. This memo heading with input from the Tahoe Interagency Executive Steering Committee (and Jonathan...

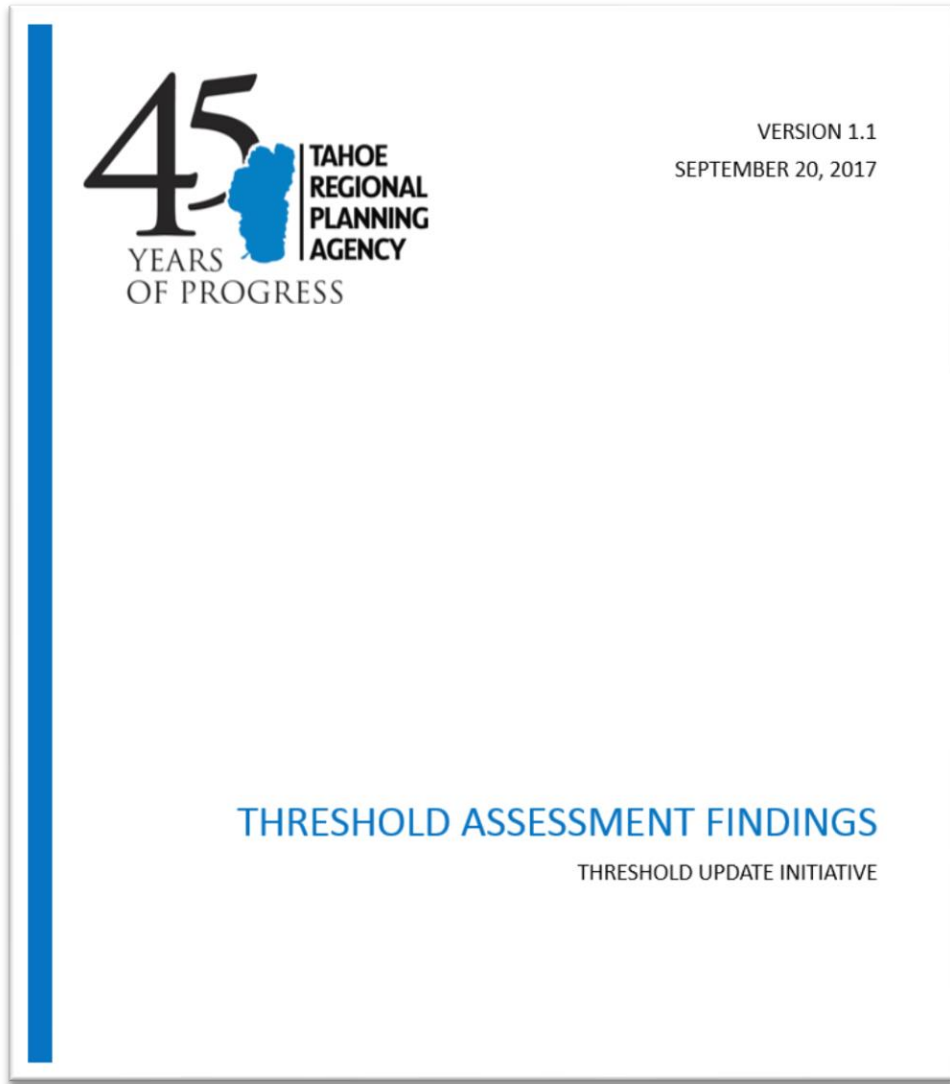
Purpose and Need
Multiple Tahoe Basin age zones (SEZs). Broadest achievement of several... implemented various... achieve desired condition... significant strides in protection... Federal guidance and... review and update of Regional Governing Board and other... encompass the four programs...

The four EPA Wetland Functions
1. Monitoring and Assessment (condition)
2. Establish Water Quality
3. Voluntary Restoration (SEZ)
4. Regulation and Permitting

- EPA grant to TRPA
 - 200k grant to advance SEZ management
 - Steering committee: U. S. Environmental Protection Agency, Nevada Division of State Lands, California State Parks, U.S. Bureau of Reclamation, Lahontan Water Board, Nevada Division of Environmental Protection, California Tahoe Conservancy
- Upper Truckee River Watershed Advisory Group
- Science Advisory Council



Tahoe Science Advisory Council



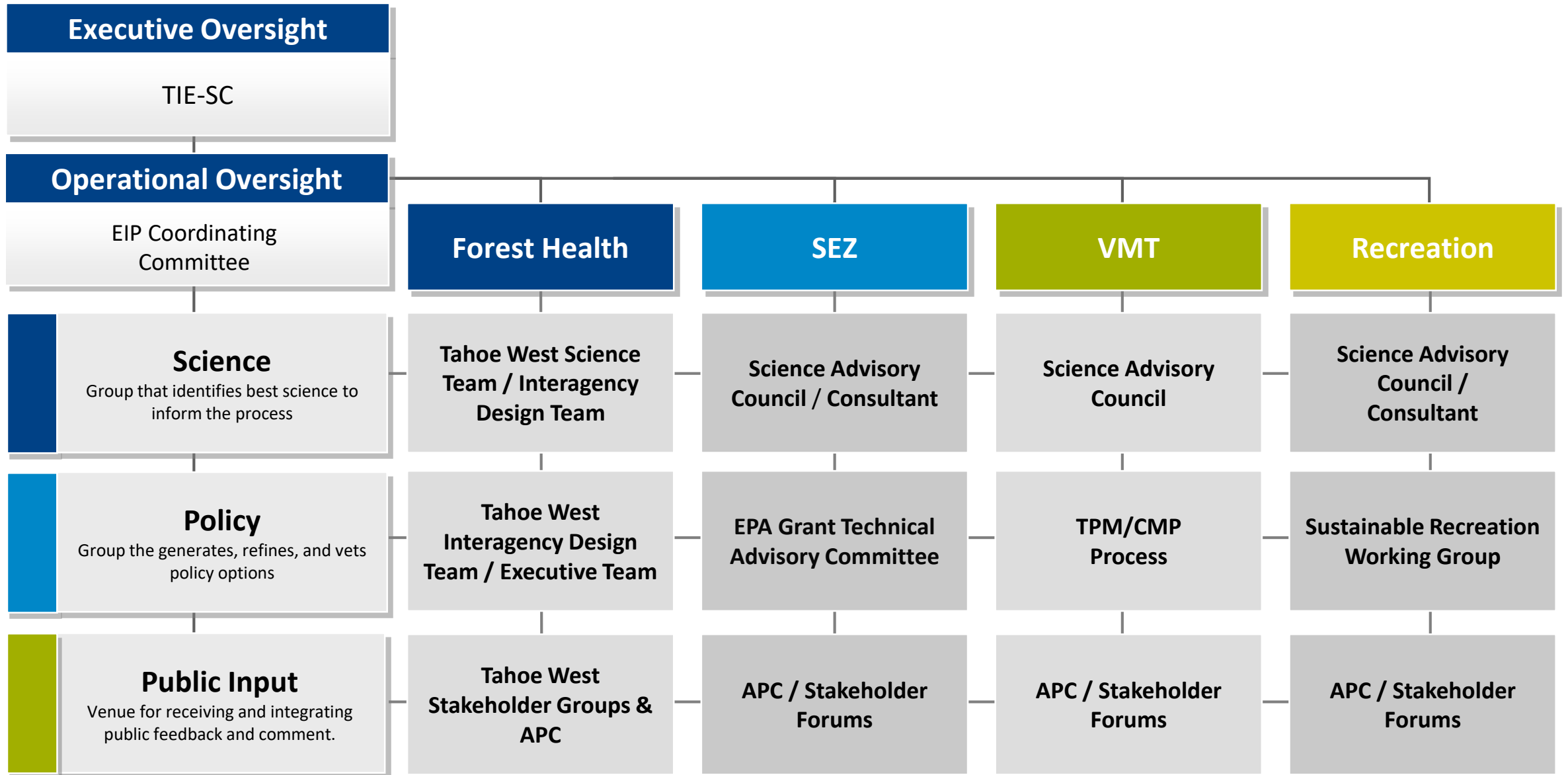
1) Standard Clean-up

- One in four standards overlapped another standard

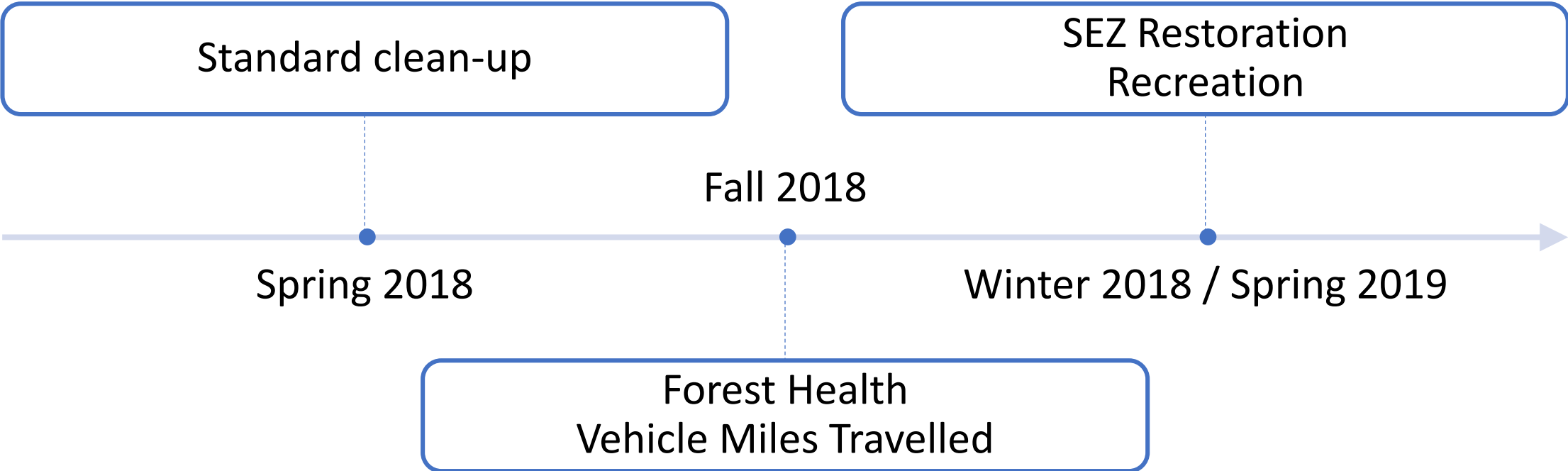
2) Best practice

- Translating lessons learned from other System to Tahoe





Timeline



Questions



A Voice for Lake Tahoe