



LAKE TAHOE SHORELINE PLAN

ENVIRONMENTAL IMPACT STATEMENT

June 13, 2018

SHORELINE PLAN SCOPE

- ▶ Water Dependent Structures
 - Moorings (buoys, slips, boat lifts)
 - Piers
 - Ramps
 - Marinas
- ▶ Low Lake Adaptation
- ▶ Environmental Threshold Attainment



PUBLIC ACCESS AND RECREATION PLANNING

- ▶ Shoreline Plan
- ▶ Sustainable Recreation
- ▶ TRPA Threshold Update-Recreation
- ▶ CTC Public Access Inventory



HISTORY OF SHORELINE PLANNING

- ▶ 1970's Shorezone Regulations
- ▶ 1980's Prohibition on structures in Fish Habitat
- ▶ 1990's Fisheries Research
- ▶ 2000's Analyses
- ▶ 2008 EIS and new ordinances adopted
- ▶ 2010 EIS Challenged and Code Vacated



SHORELINE PLAN 2016-PRESENT



**Lake Tahoe Marina
Association**



SHORELINE PLAN OUTREACH & POLICY DEVELOPMENT

Starting in 2016, the Lake Tahoe Shoreline Plan has included:

- ✓ 21 stakeholder interviews during assessment phase
- ✓ 4 public workshops
- ✓ 8 Joint Fact Finding committee meetings
- ✓ 10 presentations to TRPA Governing Board
- ✓ 2 presentations to TRPA Advisory Planning Commission
- ✓ 33 Shoreline Steering Committee Meetings
- ✓ 50 public comments submitted
- ✓ 25 briefings to associations, contractors, real estate professionals & more



SHORELINE PLAN - PRINCIPLES

- ▶ Reasonable System of Lake Access
- ▶ Low Lake Adaptation
- ▶ Environmental Protection including Scenic Consideration and Improvement
- ▶ Reasonable Opportunity for New Structures
- ▶ Predictable and Simple



SHORELINE PLAN - PIERS

- ▶ Permits pier development incrementally
- ▶ Distributes piers geographically to protect scenic environment
- ▶ Provides incentives for multiple-use piers and retirement of development potential
- ▶ Max of 128 new private piers and 10 new public piers



SHORELINE PLAN -MOORINGS



- ▶ Allocates moorings for different ownership types
- ▶ Allows marinas to convert moorings
- ▶ Allows additional anchors for low lake
- ▶ 2,116 max new moorings

SHORELINE PLAN –MARINAS & RAMPS

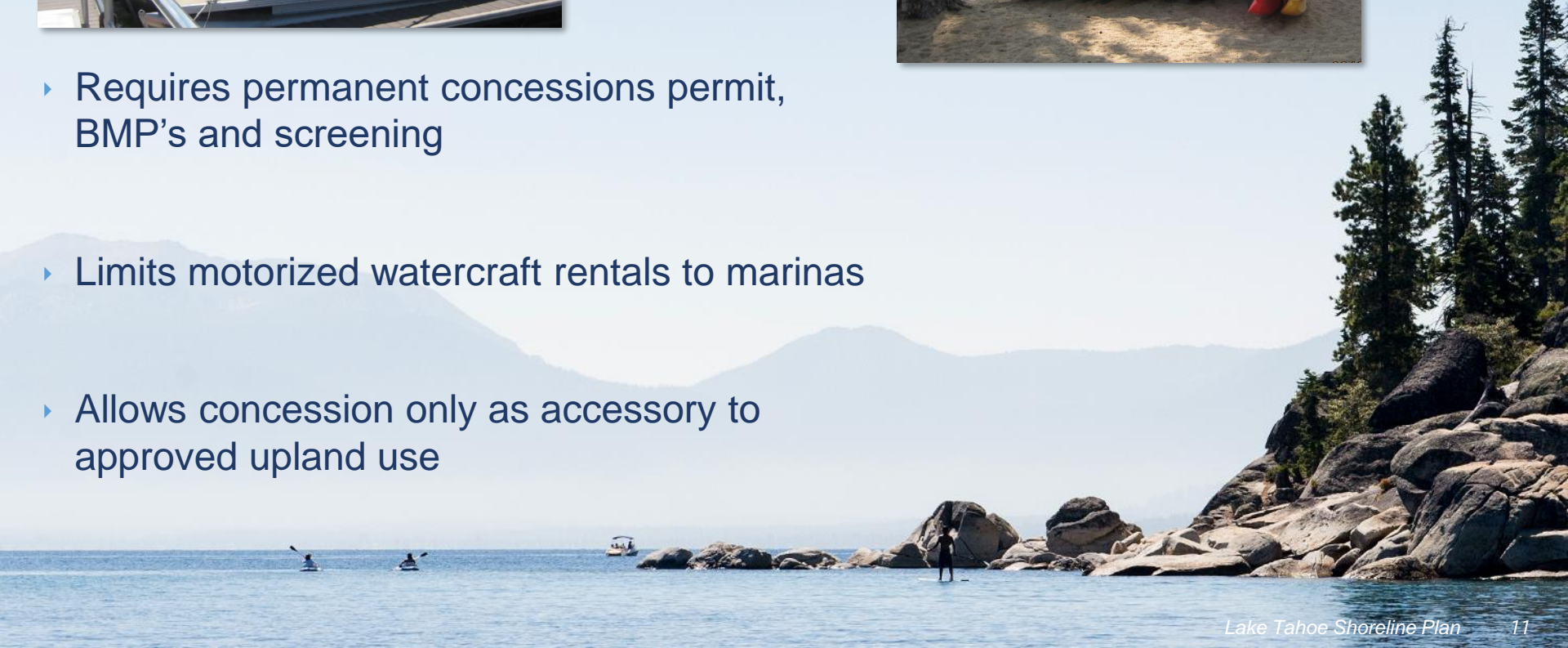


- ▶ Replaces requirement for Marina Master Plans
- ▶ Provides incentives for environmental improvement
- ▶ Allows marinas to adapt to low-lake levels
- ▶ Up to 2 new ramps

SHORELINE PLAN -CONCESSIONS



- ▶ Requires permanent concessions permit, BMP's and screening
- ▶ Limits motorized watercraft rentals to marinas
- ▶ Allows concession only as accessory to approved upland use



SHORELINE PLAN –NON-MOTORIZED RECREATION



- ▶ Expands no wake zone to all of Emerald Bay
- ▶ Increases patrols and education lakewide

- ▶ Requires safe passage around or under longer public piers
- ▶ Allows storage racks at concessions and marinas





SHORELINE PLAN EIS

PUBLIC REVIEW DRAFT

EIS TIMELINE

Step	Timing
Environmental Scoping	July 12 – August 16, 2017
Environmental Analysis	September 2017 – April 2018
Public Review Period	May 8 – July 9, 2018
Consider Comments and Prepare Final EIS	July – September 2018
EIS Certification and Plan Adoption	October 2018



JOINT FACT-FINDING PROCESS



- ▶ Identify best available science
- ▶ Develop key assumptions
- ▶ Review analytical approach for key topics
- ▶ Eight public meetings



NAVIGATING THE EIS



- ▶ Executive Summary
- ▶ 1) Introduction
- ▶ 2) Alternatives Description
- ▶ 3) Approach
- ▶ 4 – 16) Resource Chapters
- ▶ 17) Cumulative
- ▶ 18) Other TRPA Sections
- ▶ 19) References
- ▶ Appendices



NAVIGATING THE EIS: RESOURCE CHAPTERS

- ▶ Land Use
- ▶ Fisheries and Aquatic Biology
- ▶ Hydrology and Water Quality
- ▶ Soil Conservation
- ▶ Recreation
- ▶ Scenic Resources
- ▶ Air Quality
- ▶ Greenhouse Gas Emissions and Climate Change
- ▶ Noise
- ▶ Roadway Transportation and Circulation
- ▶ Terrestrial Biological Resources
- ▶ Public Health and Safety
- ▶ Cultural Resources



EIS ALTERNATIVES



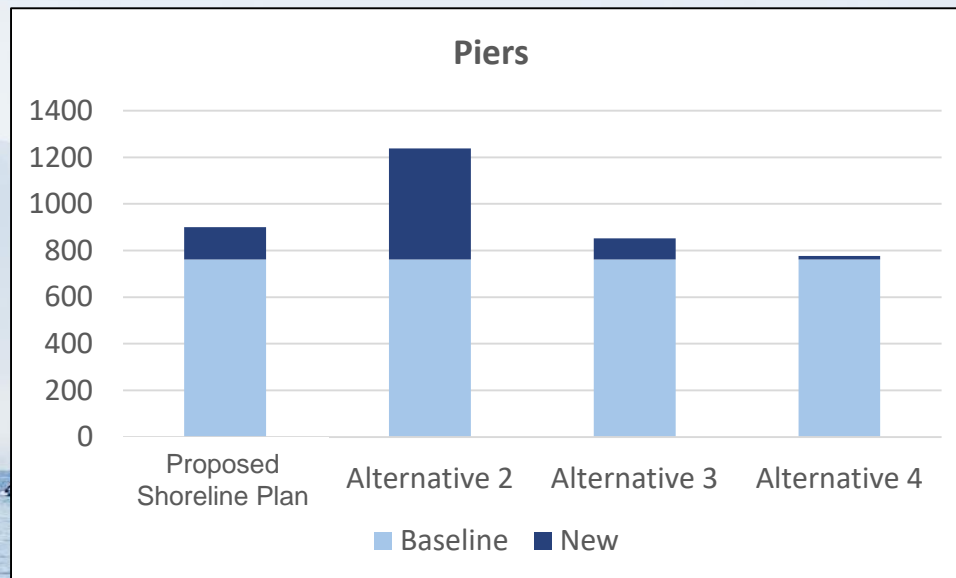
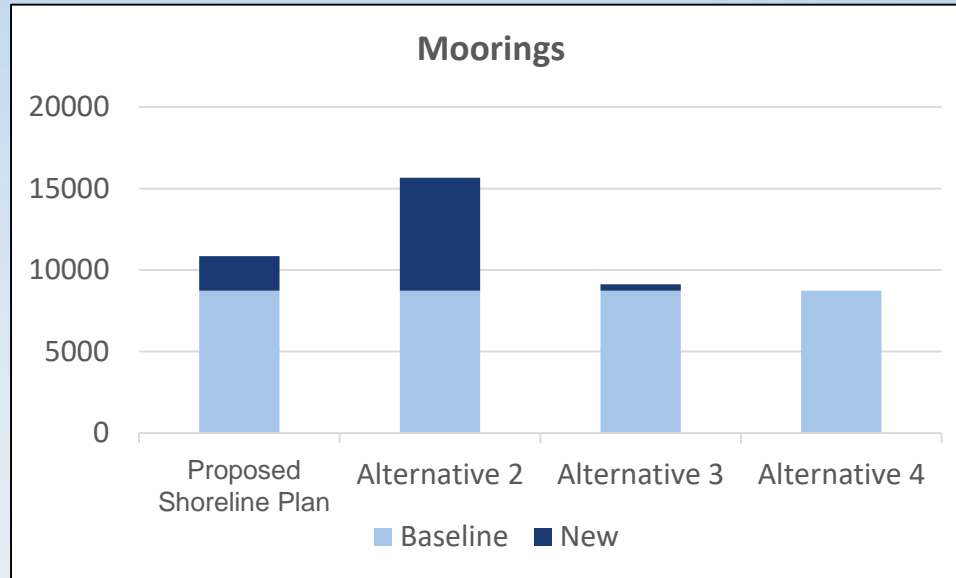
- ▶ **Alternative 1:** Proposed Shoreline Plan
- ▶ **Alternative 2:** Maintain Existing TRPA Shorezone Regulations (No Project)
- ▶ **Alternative 3:** Limit New Development
- ▶ **Alternative 4:** Expand Public Access and Reduce Existing Development



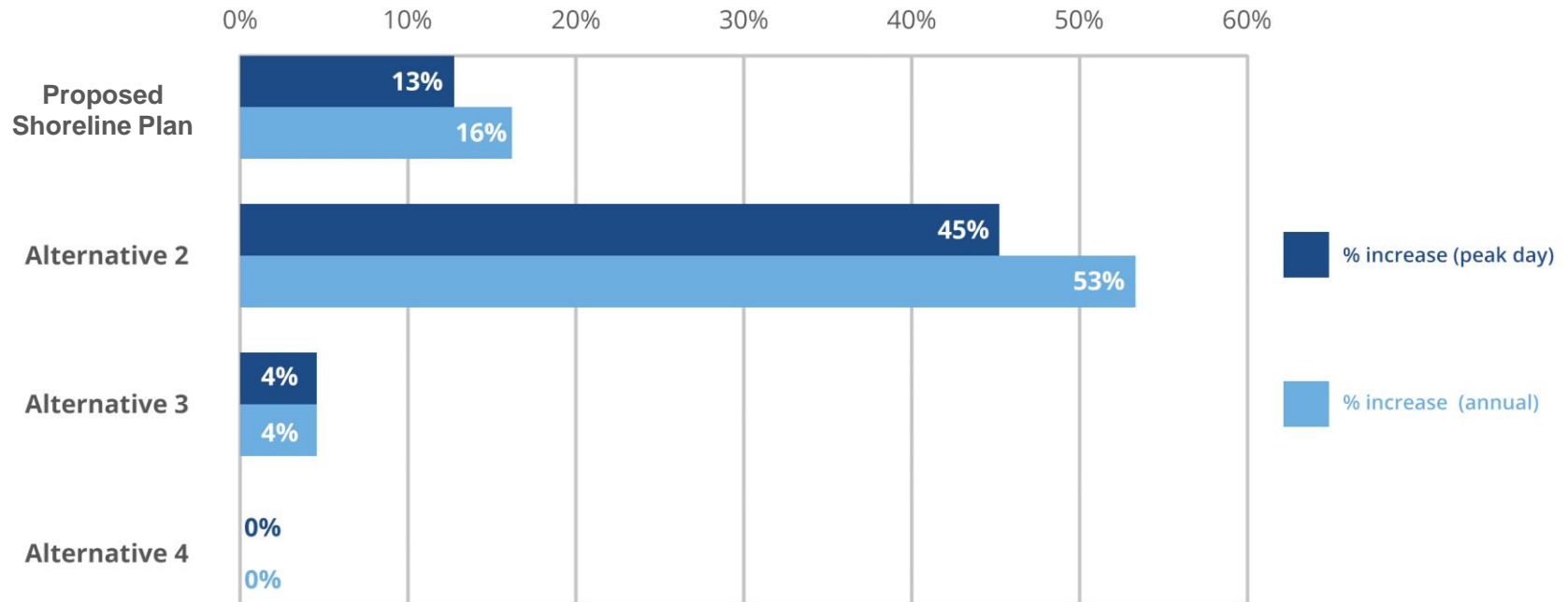
SOURCES OF IMPACTS



NEW STRUCTURES



CHANGE IN BOAT USE



THRESHOLD ATTAINMENT STRATEGIES

Shoreline Plan Strategy	Threshold Category								
	Water Quality	Air Quality	Noise	Soils	Scenic	Recreation	AIS Fisheries &	Vegetation	Wildlife
Shoreline protection areas	X	X	X	X	X	X	X	X	X
Expanded no-wake zone enforcement	X		X	X		X	X		X
Nearshore water quality adaptive management	X								
Increased AIS control							X		
Scenic requirements with projects					X				
Prime fish habitat mitigation							X		
Marina environmental improvements	X	X				X	X		
Pier standards and allocation					X	X			
Structure relocations				X		X	X	X	X
Expanded boat inspections	X	X	X				X		
Boater education programs	X	X	X	X		X	X	X	X

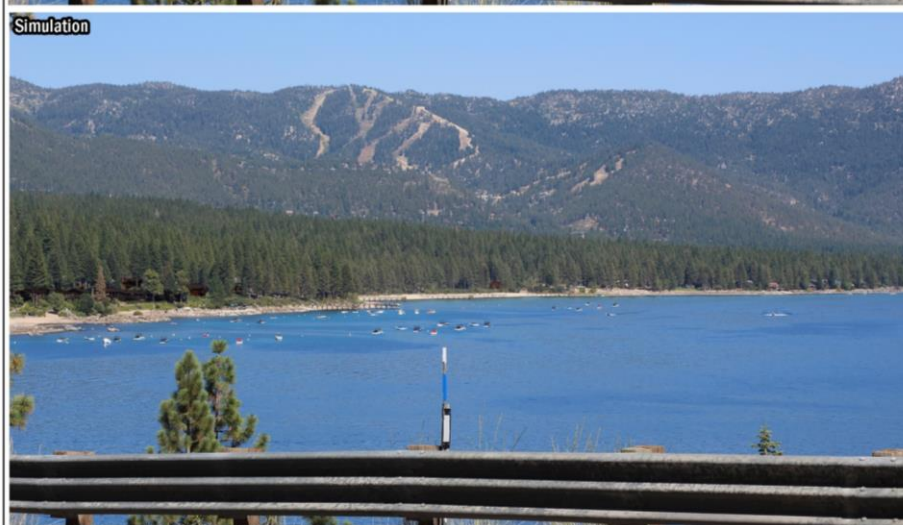
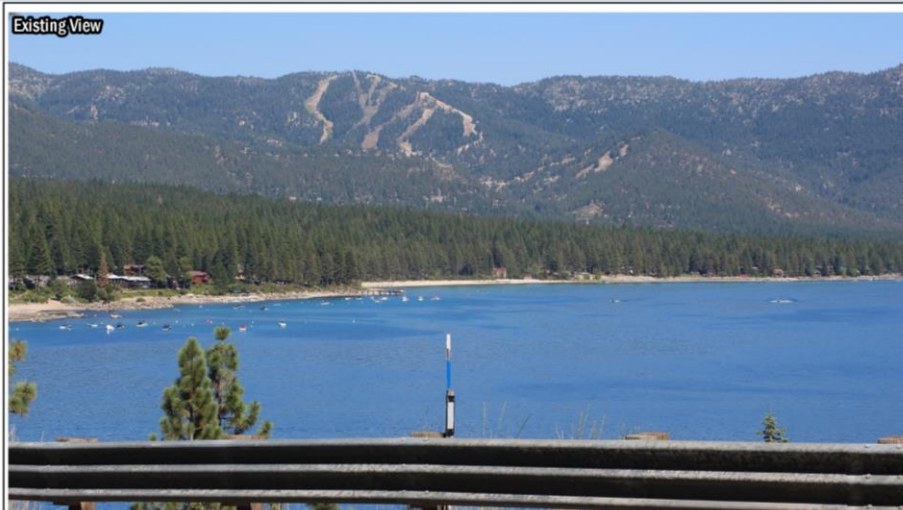
WATER QUALITY (CH. 6)



- ▶ Boat emissions
- ▶ Sediment resuspension
- ▶ Littoral drift



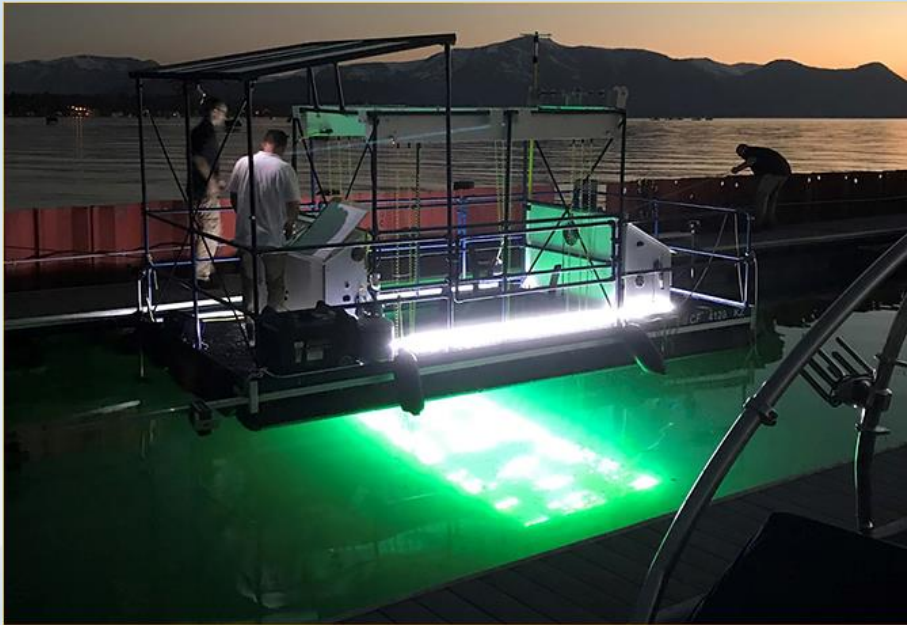
SCENIC RESOURCES (CH. 9)



- ▶ Piers
 - Design Standards
 - Visible Mass Offsets
 - Visual Magnitude
- ▶ Buoys



FISHERIES AND AQUATIC BIOLOGICAL RESOURCES (CH. 5)



- ▶ Fish habitat and spawning
- ▶ AIS introduction and spread



RECREATION (CH. 8)



- ▶ Crowding
- ▶ Non-motorized Recreation
- ▶ Public Access



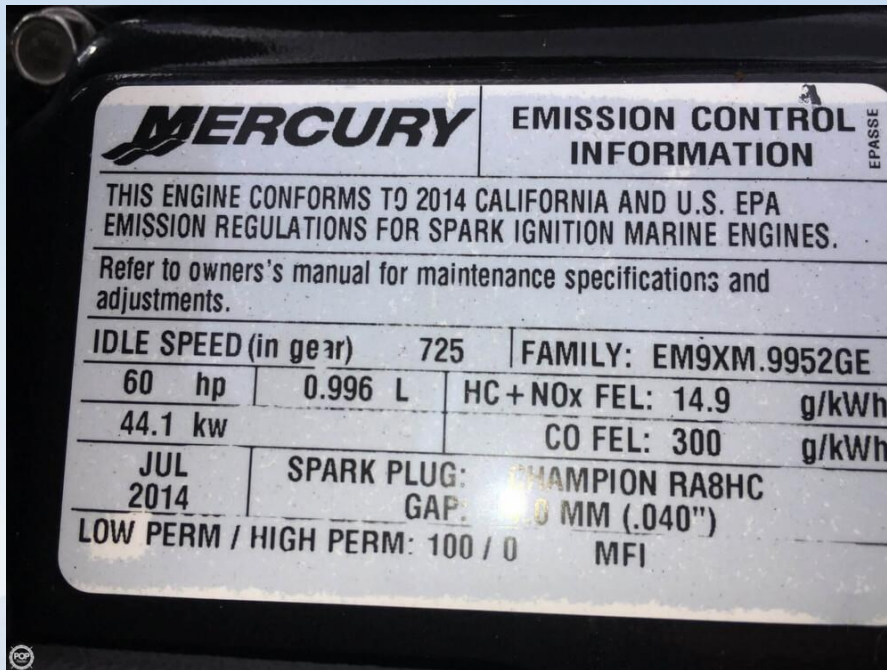
NOISE (CH. 12)



- ▶ Ambient Noise
- ▶ Single-event Noise



AIR QUALITY (CH. 10) AND GHG EMISSIONS (CH. 11)



- ▶ Air Pollutants
- ▶ Greenhouse Gases



OTHER RESOURCES

Less than significant impacts

- ▶ Land Use (Ch. 4)
- ▶ Soil Conservation (Ch. 7)
- ▶ Transportation and Circulation (Ch. 13)

Other impacts mitigated with standard project requirements

- ▶ Terrestrial Biological Resources (Ch. 14)
- ▶ Cultural Resources (Ch. 16)
- ▶ Public Health and Safety (Ch. 15)





GET INVOLVED IN SHORELINE PLANNING!

Visit www.shorelineplan.org to:

- ✓ Review the EIS
- ✓ Submit Comments
- ✓ Sign up for an organizational briefing
- ✓ Get on our mailing list