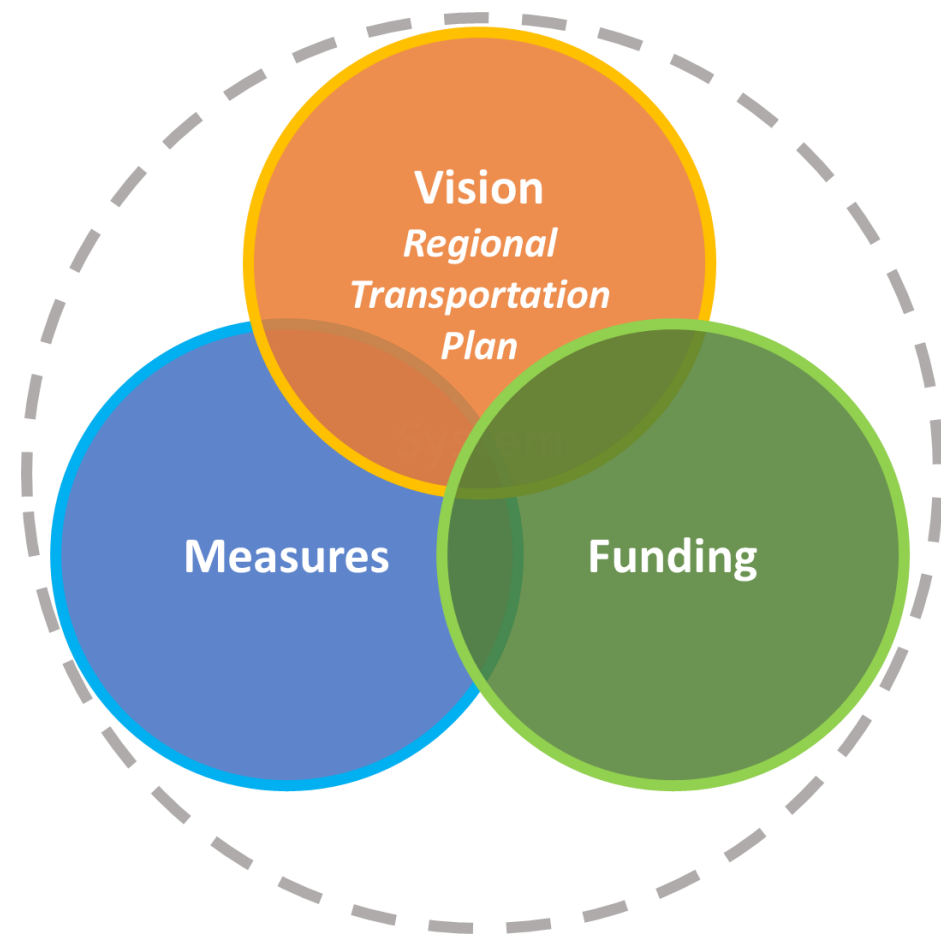




# Transportation Strategic Initiative





# Linking Tahoe: Regional Transportation Plan





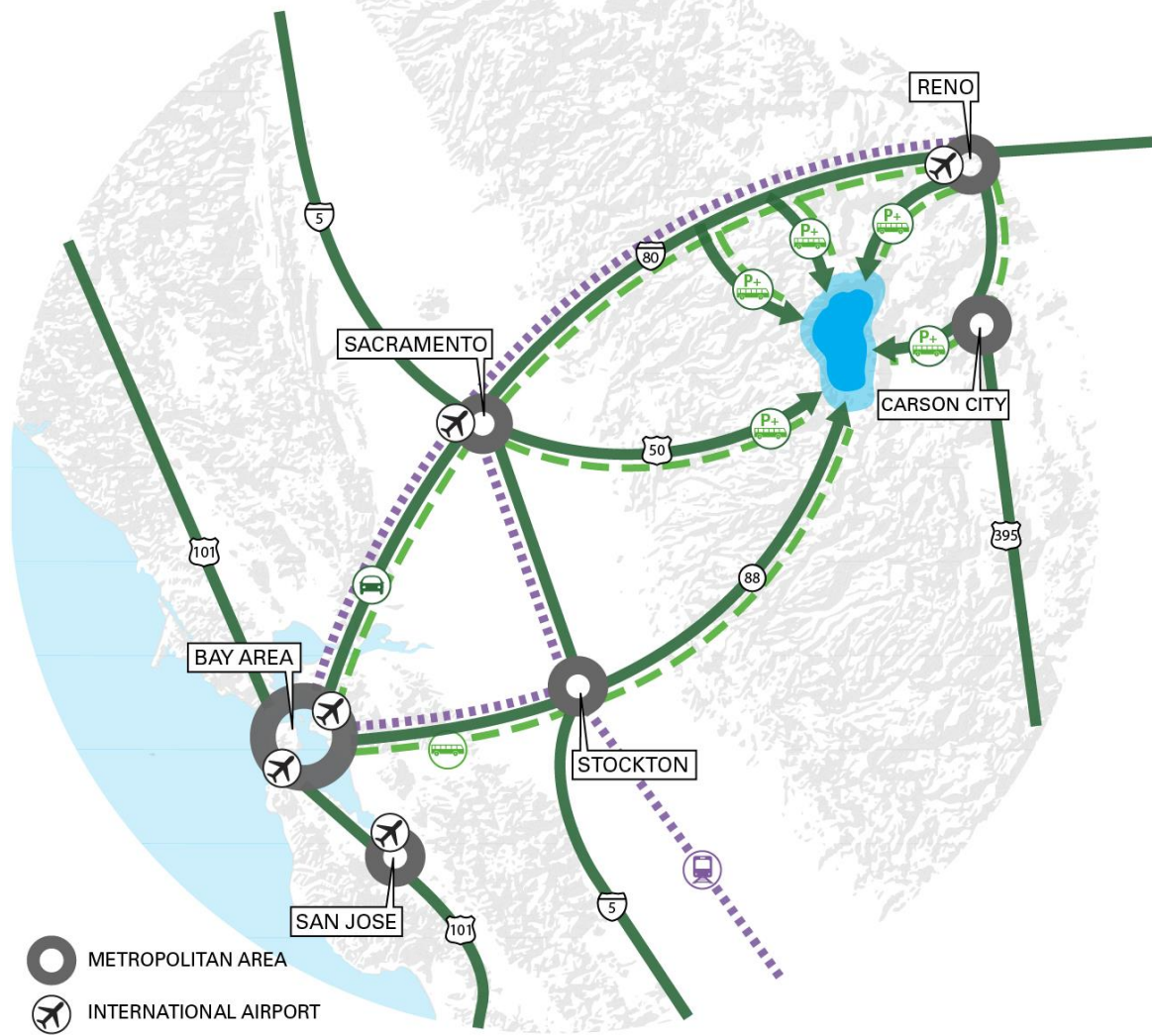
BIKE EVENT  
AUGUST 27  
7:30 am to 9:00 am

6407883

02C372  
LETT91A



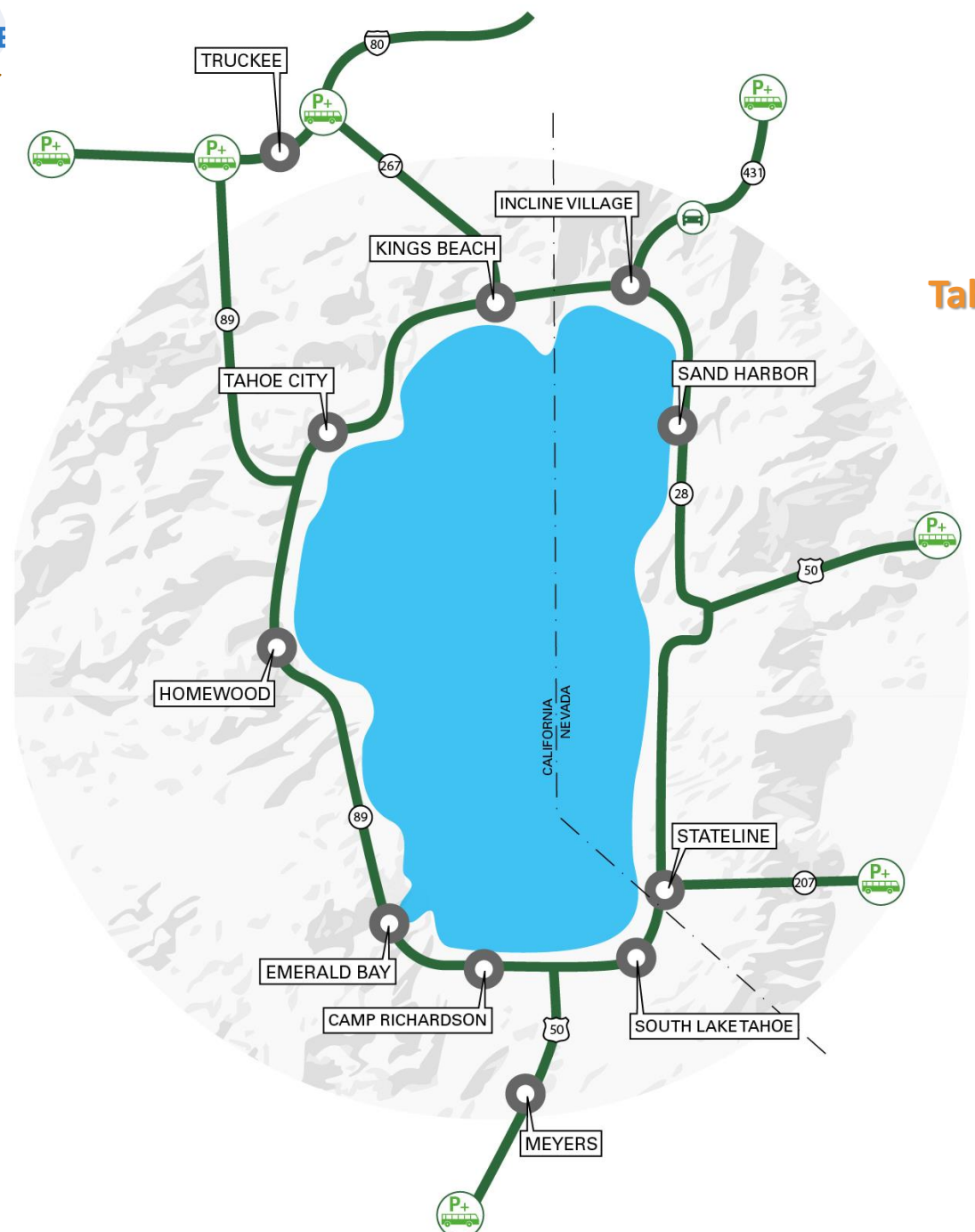
- 
- An aerial photograph of a town square. In the foreground, there is an outdoor cafe with several tables and chairs, many of which are shaded by large, dark red umbrellas. A person is walking across the paved plaza. In the middle ground, a blue bus is stopped at a bus stop on a street. The background features multi-story buildings with light-colored facades and dark roofs, surrounded by green trees under a clear sky.
- **Long-Term Vision:** Mega-Region Connections
  - **Short-Term Achievements:** Seamless Internal Transportation System
  - **Plan Key Concepts:** Data Informs Planning
  - **Moving Forward:** Measures and Funding



- METROPOLITAN AREA
- INTERNATIONAL AIRPORT
- PARK AND RIDE FACILITY
- AUTO
- RAIL
- BUS



### The Envisioned Tahoe Region System



  AUTO

 PARK AND RIDE FACILITY



## EXISTING

- 3 transit centers
- Kings Beach Commercial Core Project

## SHORT-TERM

- 17 Corridor Revitalization Projects

## LONG-TERM

- 17 Mobility Hubs or Transit Centers
- Adaptive Roadway Management on SR 89, SR 267, And U.S. 50

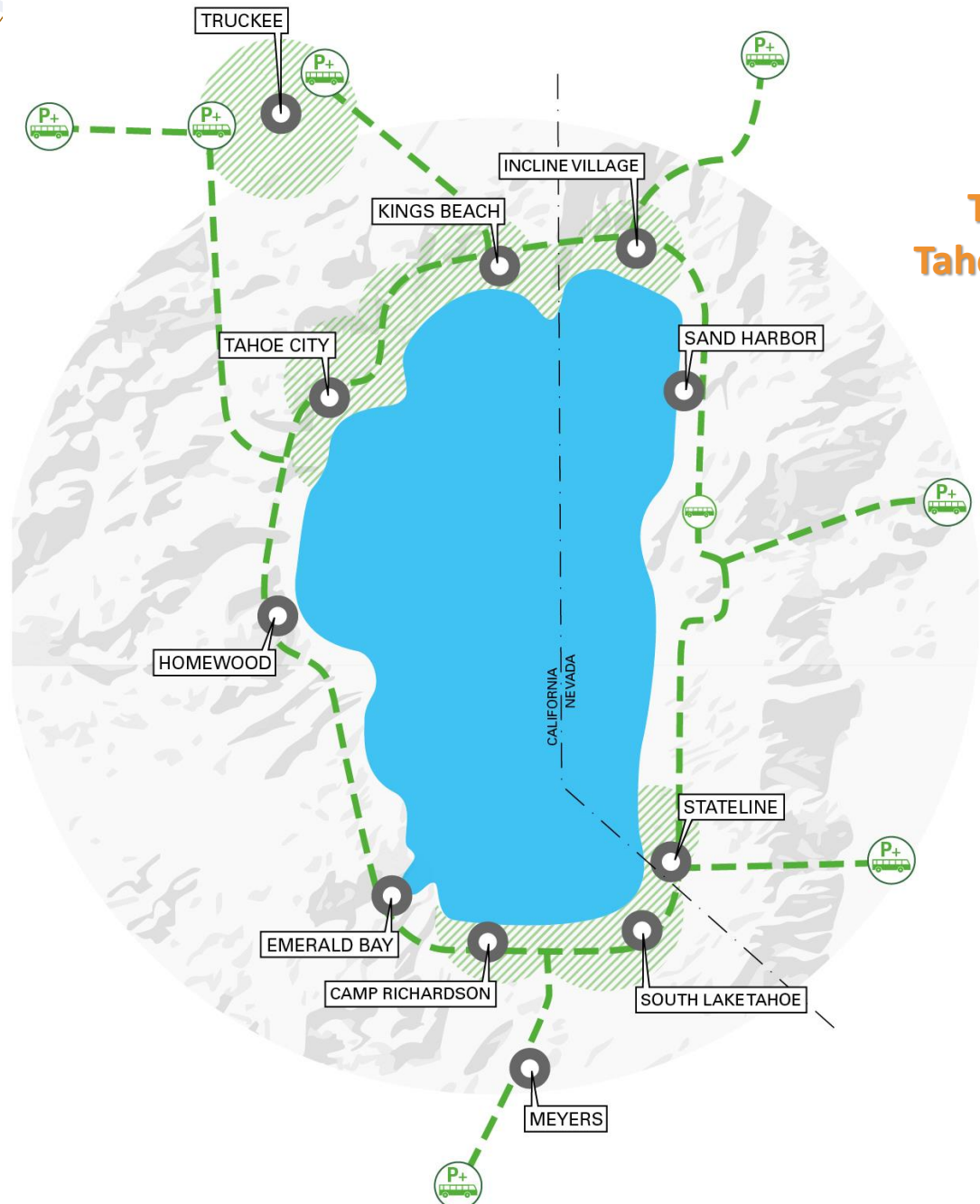
The Envisioned  
Tahoe Region System

 AUTO

 PARK AND RIDE  
FACILITY







**The Envisioned  
 Tahoe Region System**

-  **BUS**
-  **LOCAL TRANSIT SERVICE**
-  **PARK AND RIDE FACILITY**



## EXISTING

- 1 hour service on most routes
- Limited recreation site service
- No year round North / South Connection
- Limited inter-regional service

## SHORT-TERM

- 30 minute service on all main routes
- New service to Meyers to Stateline
- Increased service to Truckee
- Increased and new service to rec. sites
- Free-to-the-user transit on all in-basin routes
- Increased Inter-regional service

## LONG-TERM

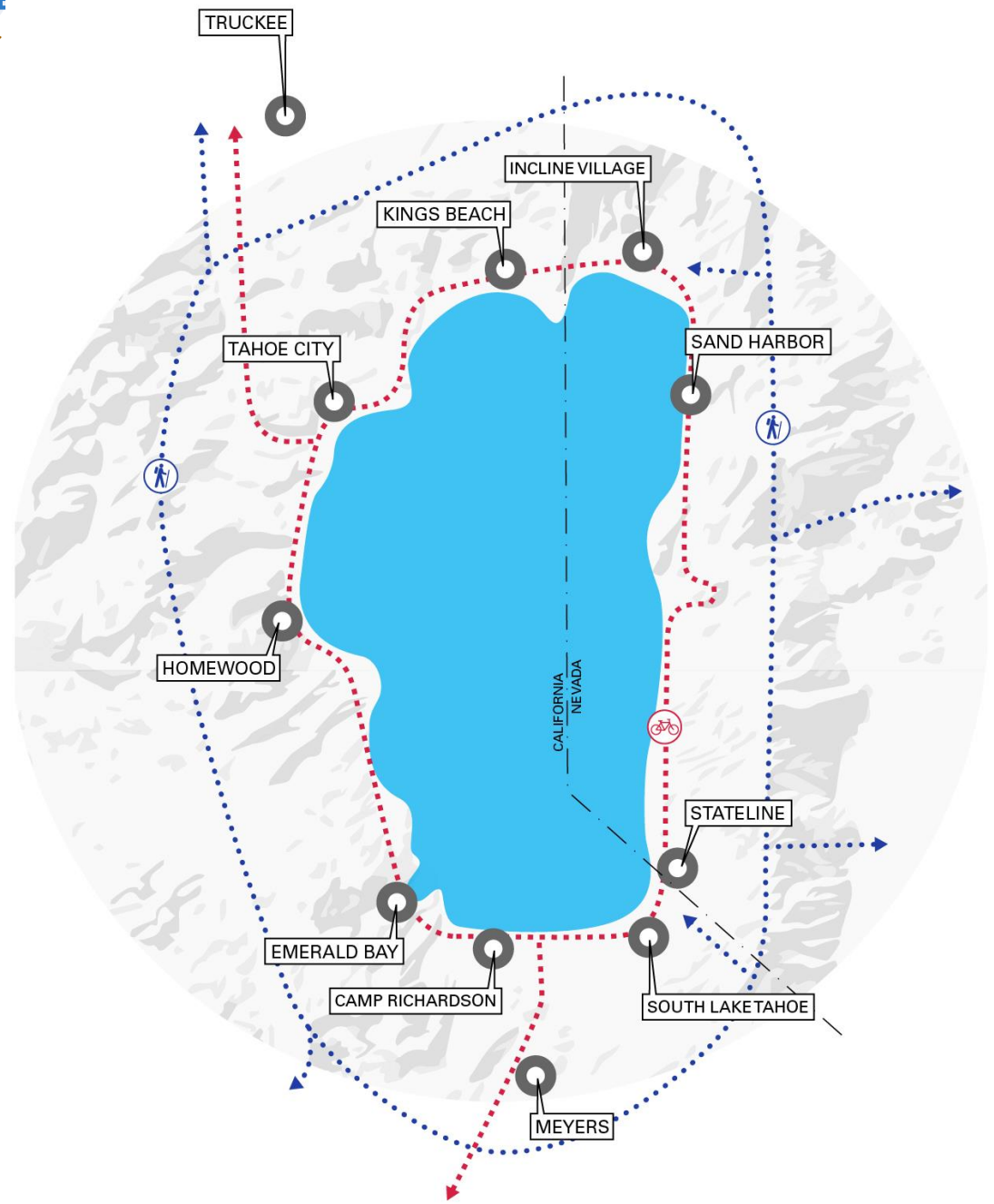
- 15- minutes service on main routes
- Frequent inter-regional connections
- 17 Mobility Hubs or Transit Centers



The Envisioned  
Tahoe Region System





# The Envisioned Tahoe Region System



-  ..... HIKING
-  ..... BIKING



### The Envisioned Tahoe Region System

## EXISTING

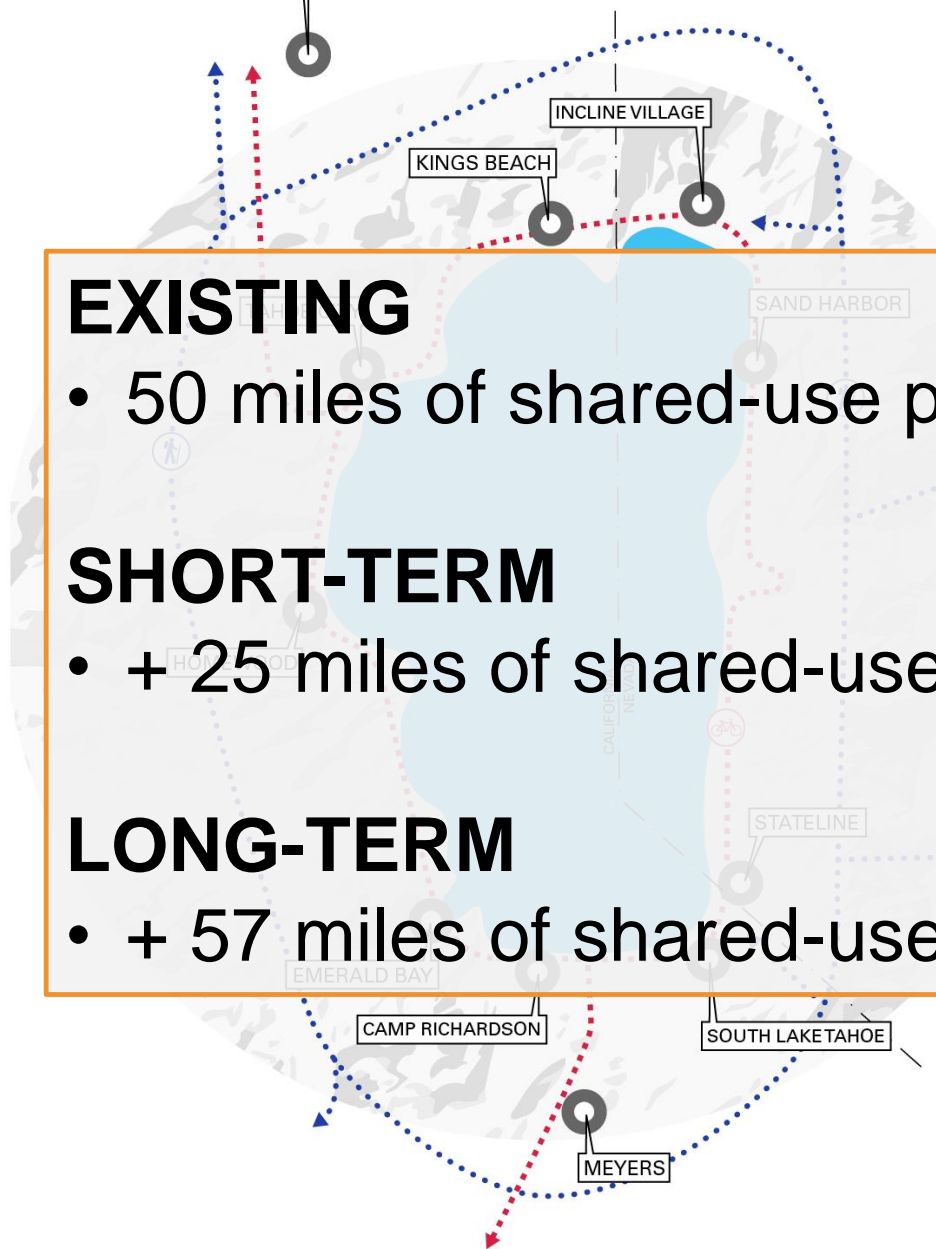
- 50 miles of shared-use path

## SHORT-TERM

- + 25 miles of shared-use path

## LONG-TERM

- + 57 miles of shared-use path



.....HIKING



.....BIKING



# The Envisioned Tahoe Region System



ELECTRIC VEHICLE  
CHARGING STATION



## EXISTING

- Limited electric vehicle fleet
- 32 public charging stations
- Limited real-time information

## SHORT-TERM

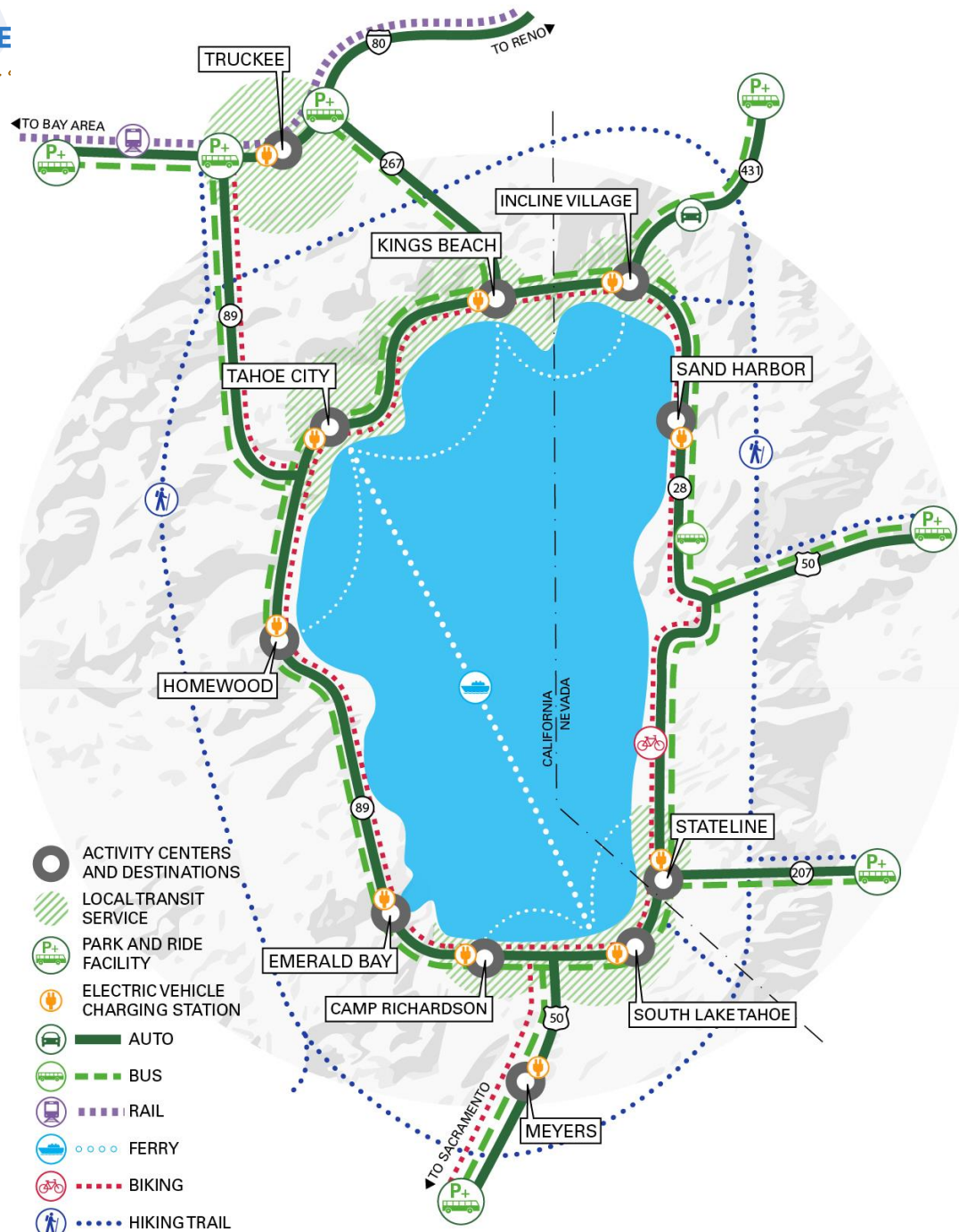
- Increased electric vehicle fleet
- Alternative fuel site analysis planning
- Incentive programs
- Real-time information on CMS, Mobile, and online

## LONG-TERM

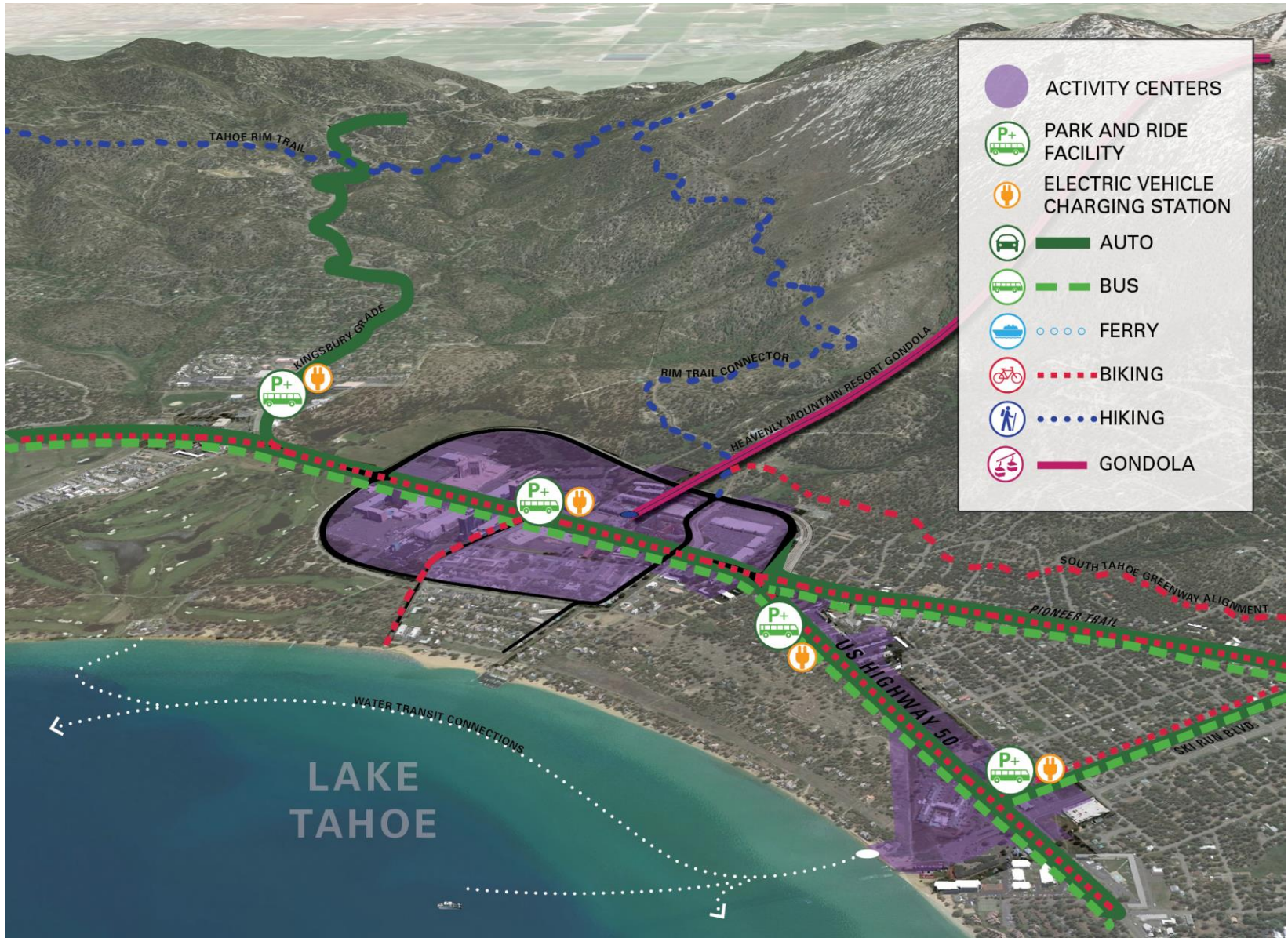
- Full Fleet saturation
- Charging stations at all centers and recreation sites



**The Envisioned  
 Tahoe Region  
 System**



- ACTIVITY CENTERS AND DESTINATIONS
- LOCAL TRANSIT SERVICE
- PARK AND RIDE FACILITY
- ELECTRIC VEHICLE CHARGING STATION
- AUTO
- BUS
- RAIL
- FERRY
- BIKING
- HIKING TRAIL





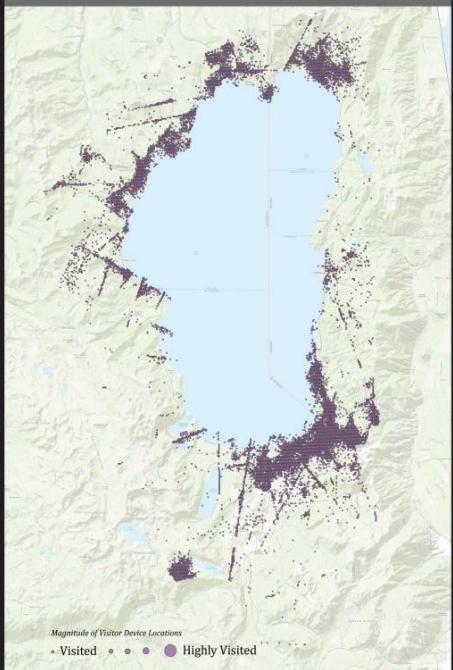


# Data, Data, Data

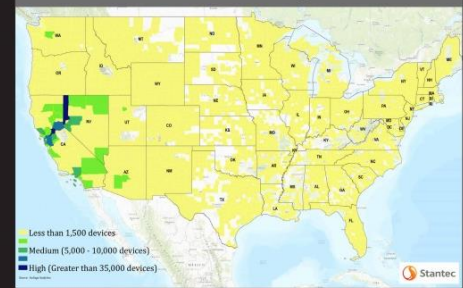
## Using Data to Plan and Meet Regional Goals

Approx. 24 million visits per year = nearly 10 million vehicles total

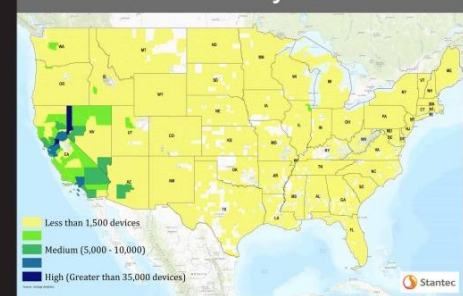
Activity Density by Device  
 February 2014



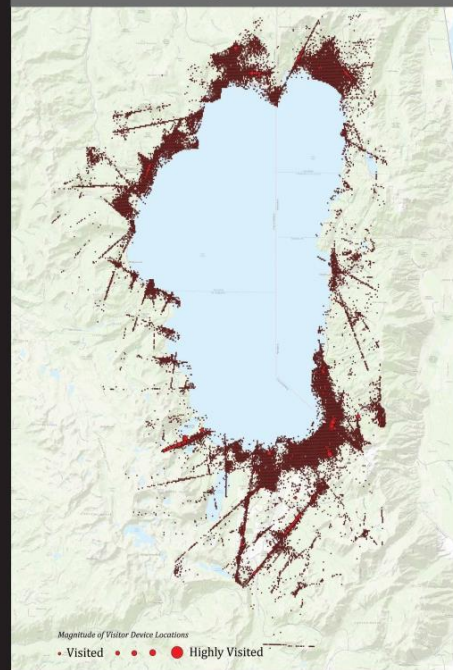
Home Locations of Visitors  
 Devices February 2014



Home Locations of Visitors  
 Devices July 2014



Activity Density by Device  
 July 2014



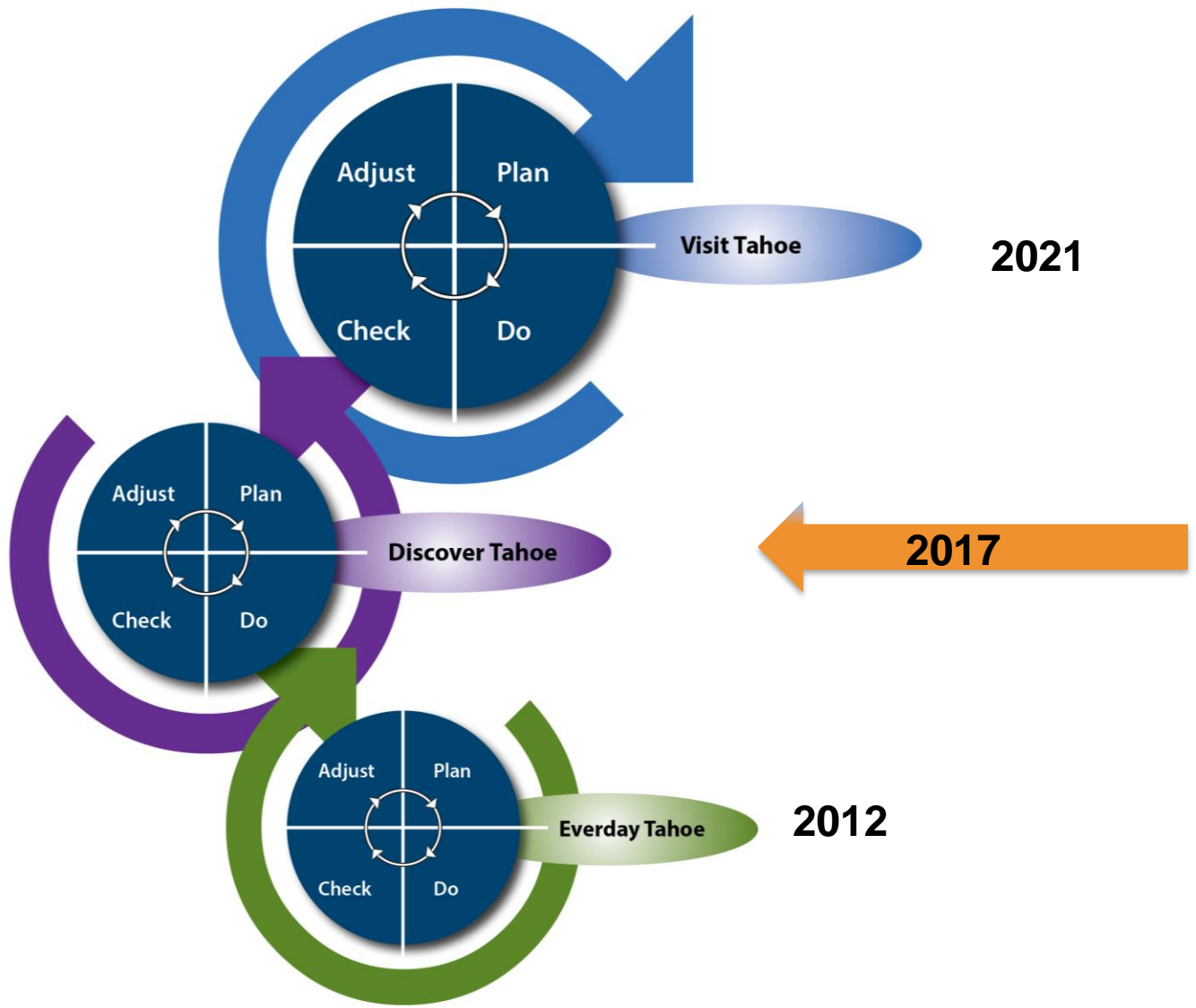
# Transportation Planning is Fun!

- ✓ Over **800** public participants reached
- ✓ **3** surveys, **2** community workshops, door-to-door for **100** Latino community members, multiple association meeting presentations
- ✓ **4** Project Development Team Meetings
- ✓ Over **50** TAC members for Goals, Policies, and Project Review





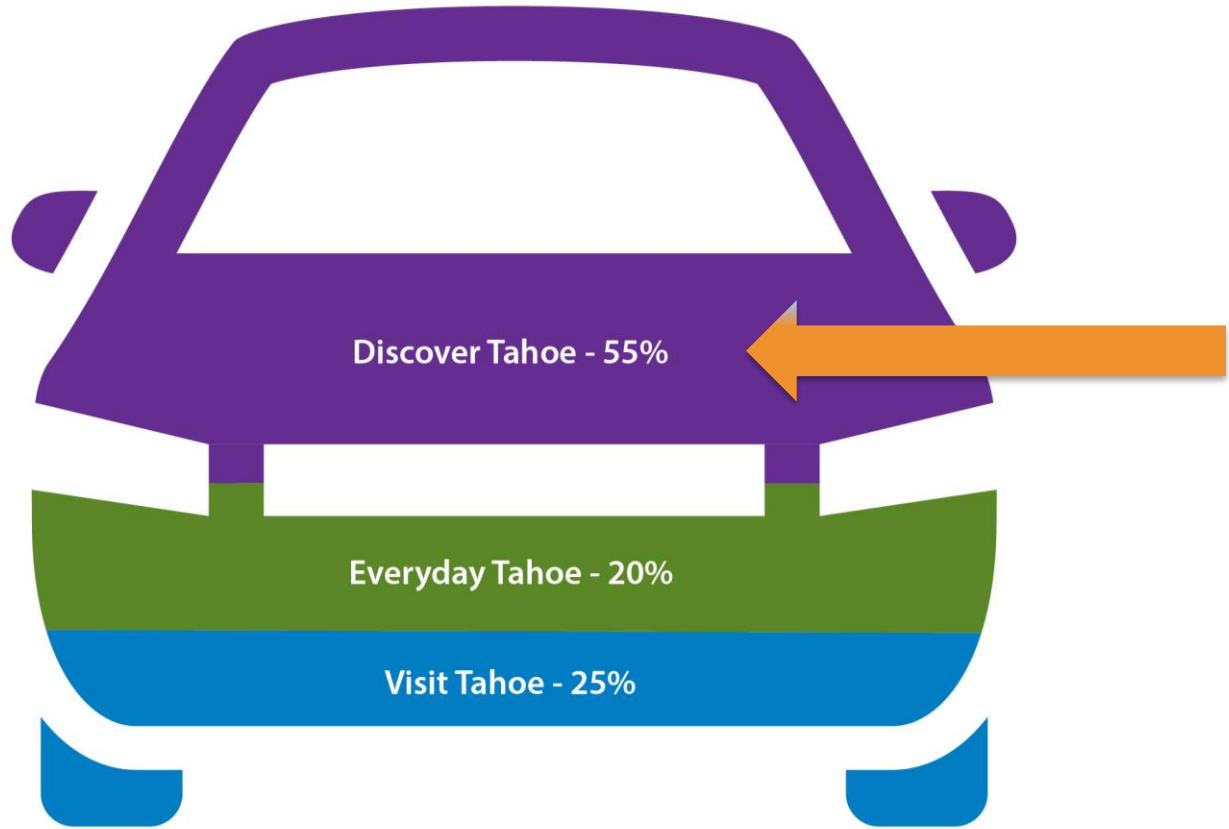
# Sequenced Approach





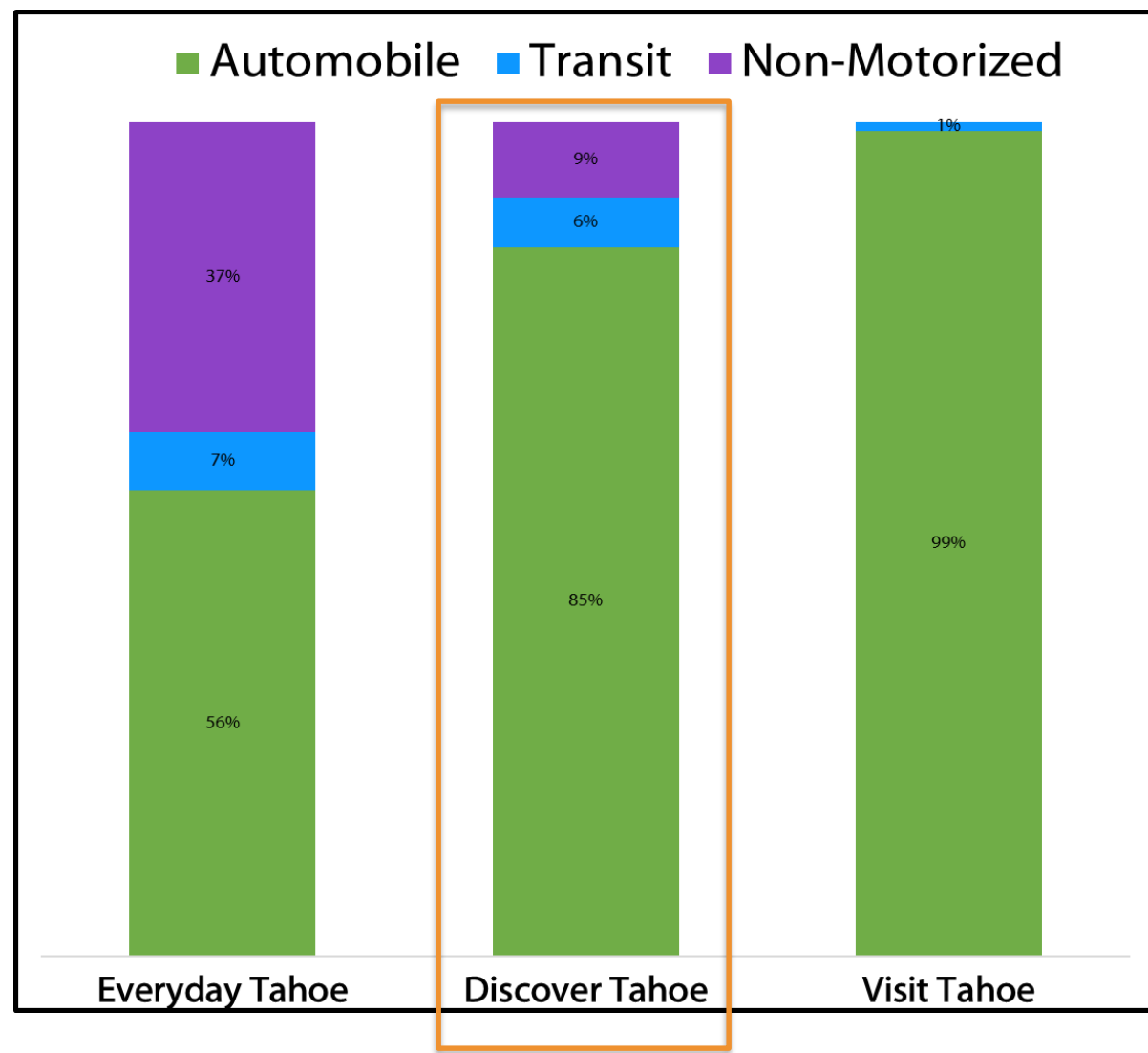
# User Type & Travel Behavior

Daily Trips by Travel Behavior





# User Type & Travel Behavior



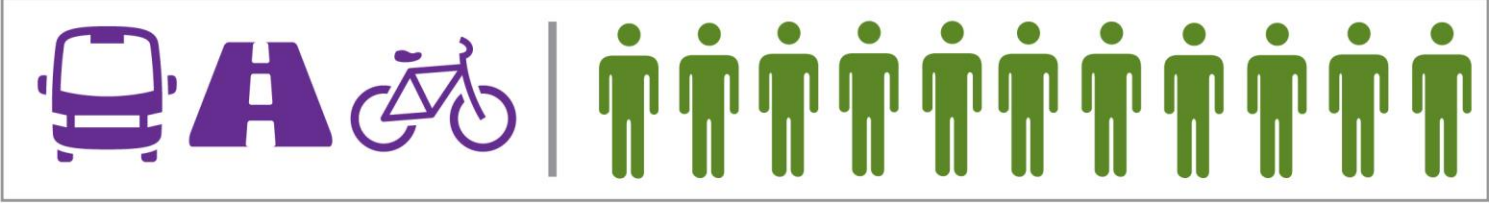


# Planning for a Flexible System

## Shoulder Season (A Tuesday in November)



## Peak Season (4th of July Weekend)



## Capacity Responds to Demand



**Supply:** Transportation Infrastructure

**Demand:** Number of People



# Discover Tahoe: Infrastructure & Services



**TRANSIT**



**TRAILS**



**TECHNOLOGY**

# Transportation Demand Management Incentive Programs





# Discover Tahoe: Recreation Travel



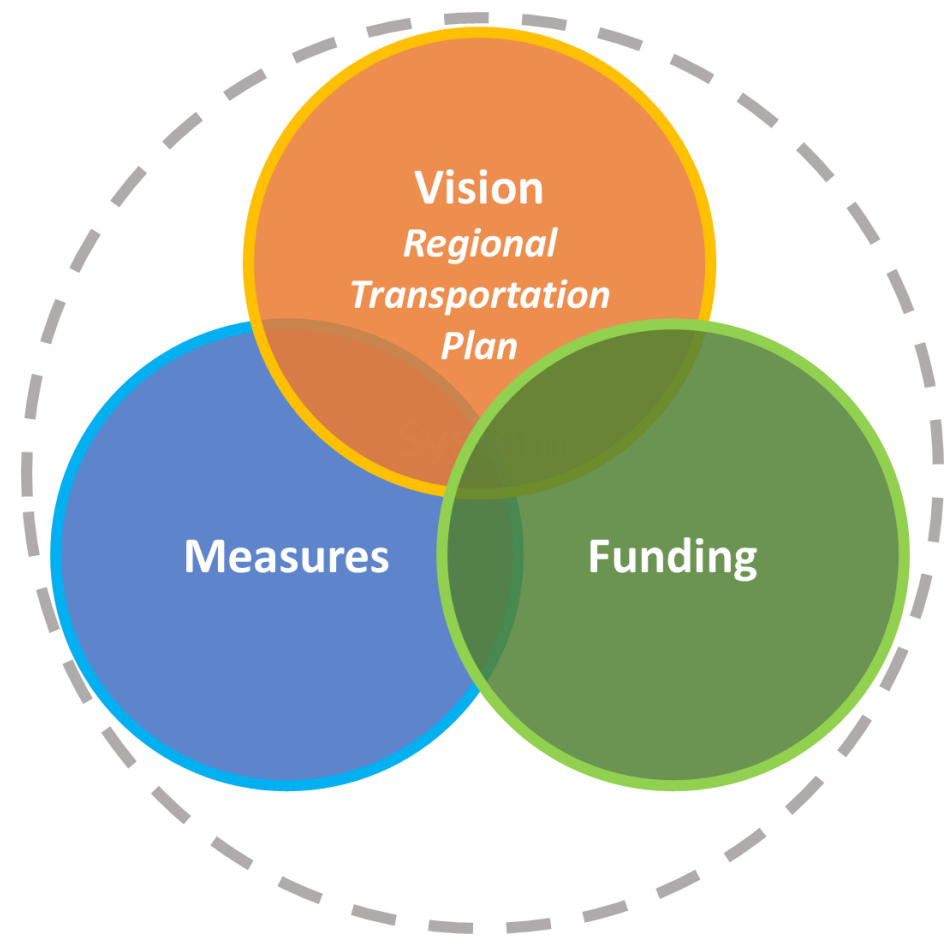


# 2017 Regional Transportation Plan Timeline

Milestone	Date	Location
Draft Release	February 22, 2017	TRPA Governing Board Meeting: South Shore
30-Day Comment Period	Ends March 24, 2017	Submit Comments to Morgan Beryl: mberyl@trpa.org
Estimated Approval	April 26, 2017	TRPA Governing Board Meeting: North Shore



# Transportation Strategic Initiative





## lake tahoe INFO

About

Log In

Connecting people with information to improve decision making and sustain investments in the Lake Tahoe Basin.

Sustainability Dashboard

EIP Project Tracker

Parcel Tracker

Threshold Dashboard

Data Center

This site brought to you by TRPA with funding provided by:



In partnership with:



# Transportation is Transformation

