

# Transportation Equity Study Policy Workshop

TRPA Governing Board

February 22, 2023

Agenda Item VI.A

2022

2023

Feb Mar Apr May Jun Jul Aug Sep Oct Nov Dec Jan Feb Mar Apr May Jun Jul

Task 1

Project Management

- Check-in Meetings
- Check-in Meetings
- Check-in Meetings
- Check-in Meetings
- Check-in Meetings
- Check-in Meetings
- Check-in Meetings
- Check-in Meetings
- Check-in Meetings
- Check-in Meetings



Kick Off Meeting



Board Meeting



Board Meeting



Board Meeting

Task 2

Public Outreach



Focus Groups (5)



Community Workshops (5)



Document Review



Stakeholder Meetings (5)



Stakeholder Meetings (5)



Leverage Social Media/  
Pop Up Events



Leverage Social Media/  
Pop Up Events



Leverage Social Media/  
Pop Up Events



Summary Report

Task 3

Develop Tools to Assess Equity



Develop Draft Equity Indexes



Develop Final Equity Indexes

Task 4

Provide Recommendations and Document Support



Policy Recommendations and Staff Support for Stakeholder Presentations



# Equality



# Equity



# Project Objectives

- Identify transportation burdens and barriers
- Incorporate equity considerations into planning and permitting processes
- Establish targets to effectively measure transportation equity
- Leverage discretionary funding opportunities for the region
- Provide policy recommendations to:
  - Improve TRPA's public outreach and engagement
  - Improve transportation access to recreation opportunities for transportation disadvantaged populations
  - Reduce climate change impacts to Tahoe's most vulnerable populations

# Priority Communities



Photo: Tahoe Transportation District

- Persons without private transportation
- Seniors (individuals 65 years and older)
- Persons living below the poverty line
- Individuals with a disability
- Youth (individuals under 18 years old)
- BIPOC (Black, Indigenous, and people of color)

Equity

Safety

Mobility

Our Community

Generate PDF



## Housing and Transportation



# 52.6%

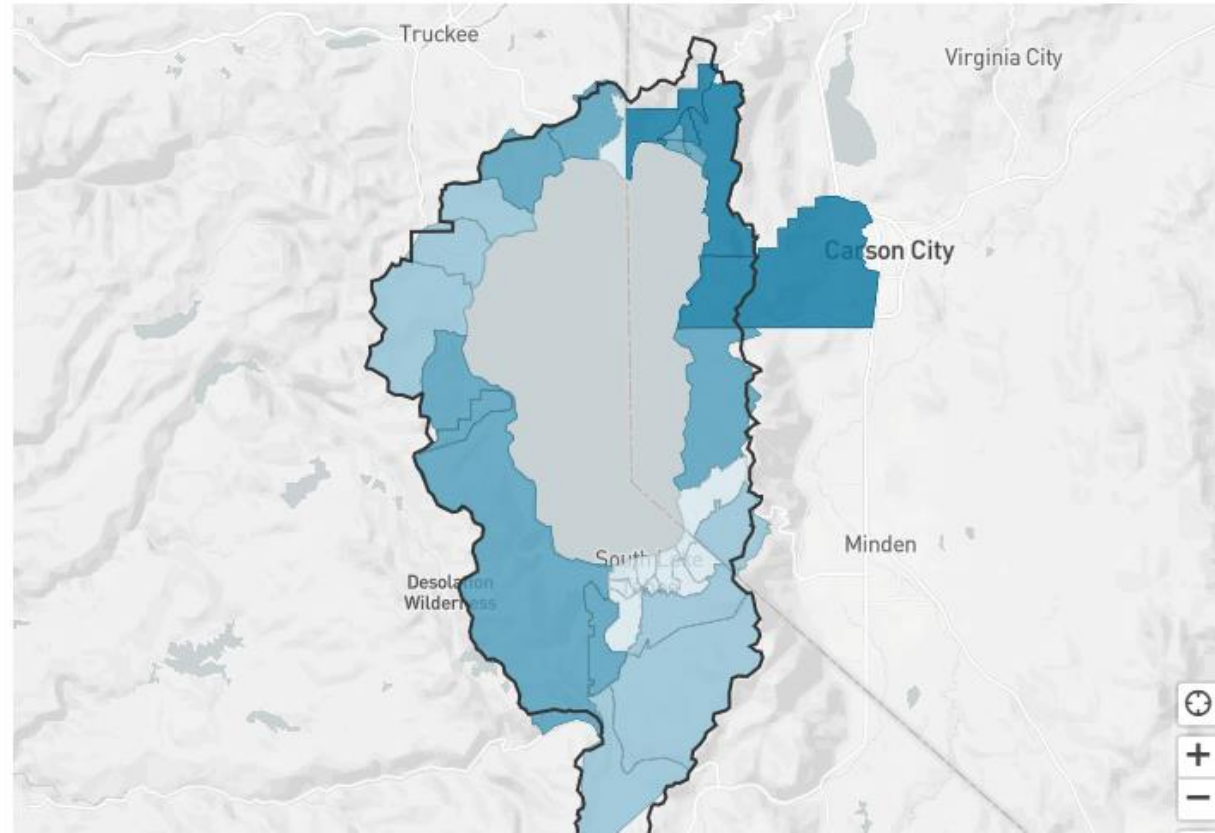
of Median Income Families' Income

## Income Spent on Housing and Transportation

TRPA Boundary

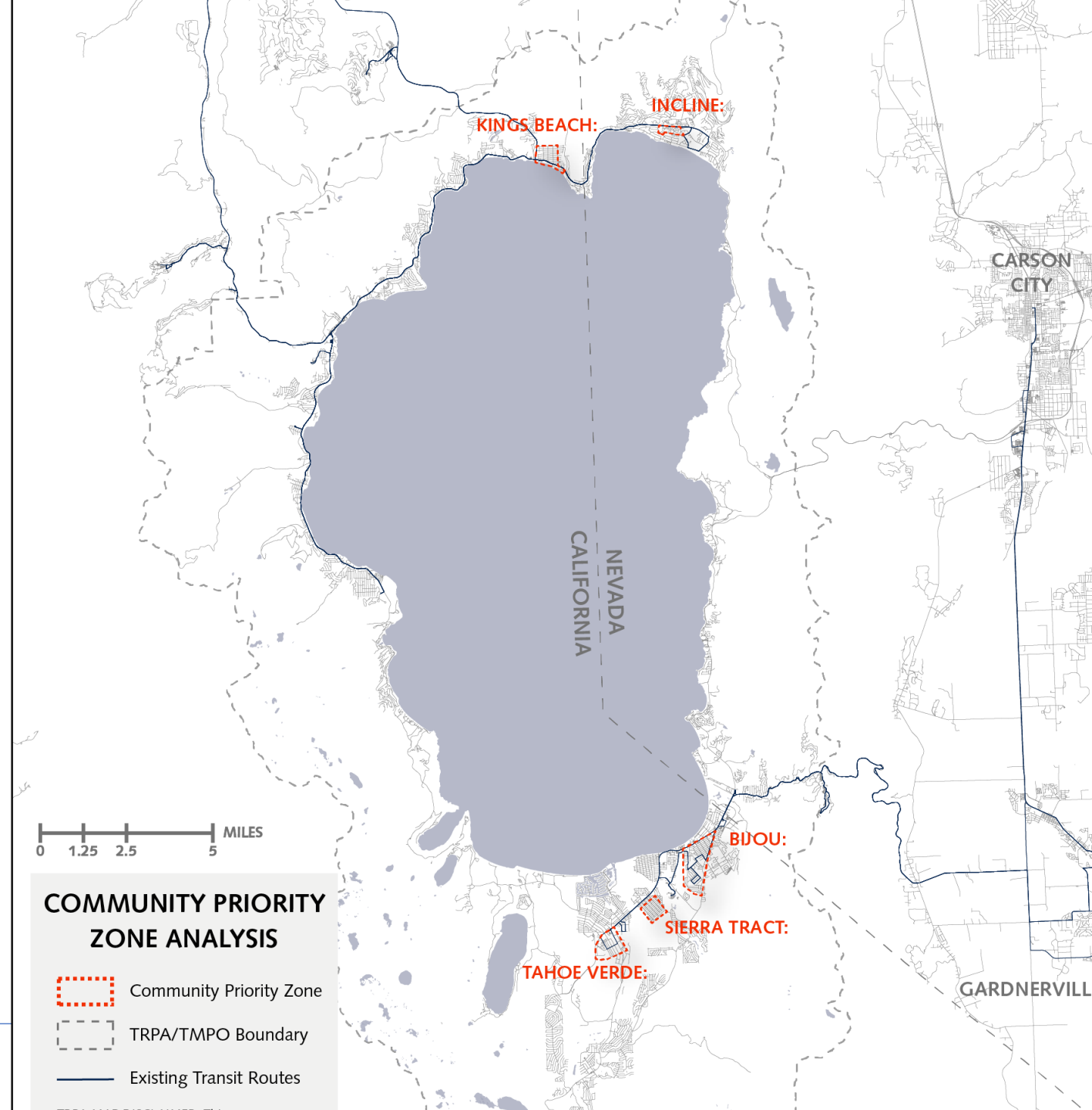
Sources: US HUD & DOT LAI V3.0 2016

## Income Spent on Housing and Transportation



# Community Priority Zones

- Kings Beach
- Incline Village
- Bijou/Ski Run
- Sierra Tract
- Tahoe Valley



# Collaboration & Outreach

- Focus groups
- Targeted outreach in neighborhoods
- One-on-one stakeholder meetings
- Community survey
- Pop-ups
- Workshops in Spanish





# Partner & Community Outreach

- South Lake Tahoe Family Resource Center
- Barton Hospital
- Heavenly Resort
- Sierra Community House
- Lake Tahoe Unified School District
- Palisades Resort
- SLT Fire
- Tahoe Transportation District
- North Tahoe Fire
- CA Tahoe Conservancy
- Washoe Tribe
- North Tahoe Truckee Homeless Services
- Saint Francis of Assisi
- Tahoe Family Solutions
- Boys & Girls Club
- SOS Outreach
- Live Violence Free
- Lake Tahoe Community College
- Tahoe Coalition for the Homeless
- SS/TMA
- Achieve Tahoe
- St. Theresa's Church
- Lake Tahoe Bicycle Coalition
- Meals on Wheels
- CA Dept. of Rehab
- Tahoe Forest Health Services
- Alta Regional Center
- ADVANCE
- TNT/TMA
- Tahoe/Truckee Community Foundation
- TART

# Transportation Barriers

- Availability
- Accessibility and safety
- Cost/affordability
- Distance and time spent travelling
- Adequacy of transportation conditions
- Emergency preparedness and resiliency



# Engagement

- 7% of Basin population does not speak English



# Access

- Inadequate snow removal can create access challenges



# Infrastructure

- Ensure advancements in electric vehicle charging infrastructure and broadband while avoiding gentrification



# Services

- Lifeline services are critical
- Crisis training for transit first responders could mitigate transportation risks



Photo: Tahoe Transportation District

# Environment

- Regional concerns about evacuation planning and emergency scenarios



# Technology

- Providing accessible real-time info is essential for people without smartphones





# Equity Index Scorecard



## 1. COST OF SERVICE

This metric will vary by transportation mode and location, and therefore should be set by the community; a recommended default is that households should spend no more than 20% of total budget on transportation costs.

Mason, Jacob. (2018)  
The Future of Transport is Sustainable Shared Mobility. ITDP. February 22, 2018.



## 2. ACCESSIBILITY

Transportation mode is physically accessible (available in neighborhoods), accessible to disabled people, accessible to people with various cultures/languages, accessible without the need for banking or a smartphone.



## 3. ADEQUACY OF SERVICE

Frequency of transit, travel times, time spent in traffic, optimal availability of parking, etc. for both residents and visitors, Consistency and variability of travel times, predictability of travel times.



## 4. PROXIMITY OF SERVICE

Number of households by income within walking distance to schools and services. Number of households within 30-minute transit ride or 20-minute auto ride of employment center, etc. Number of transit transfers needed, time spent in transit. Access to recreational facilities within the Basin.



## 5. ENVIRONMENTAL IMPACTS

Projects and programs that reduce quantities of air pollutants (PM, NOx) reduction, level of physical activity, etc., reduce greenhouse gases and promote company development reducing VMT per capita.

Caltrans (2010). Smart Mobility Framework 2010: A Call to Action for the New Decade, p 10



## 6. ECONOMIC IMPACTS

Number of households within 30-minute transit ride or 20-minute auto ride of shopping, recreational and/or travel centers. Number of transit transfers needed, time spent in transit.



## 7. SAFETY

Collision rate and severity; personal safety issues (harassment, profiling, etc.)

Caltrans (2010). Smart Mobility Framework 2010: A Call to Action for the New Decade, p 10

# Questions?



**TAHOE  
REGIONAL  
PLANNING  
AGENCY**

# Breakout Groups

## Facilitators:

- **Victoria Ortiz**, Community Engagement Manager at TRPA
  - **Kira Smith**, Senior Transportation Planner at TRPA
  - **Kendall Flint**, Project Manager at DKS Associates
  - **Katherine Huston**, Paralegal at TRPA
- Group 1 (Tahoe Room): Online Governing Board members
  - Group 2 (Washoe/Fremont Rooms): Governing Board members
  - Group 3 (Marlette Room): Governing Board members
  - Mentimeter (public participation)

---

Public Participation: Go to [www.menti.com](https://www.menti.com) and use the code **6734 3478**





# Breakout Groups

What are the most important policy ideas and actions to focus on?

- Ideas you support?
- Clarification needed?
- Comments/concerns?

Public Participation: Go to [www.menti.com](https://www.menti.com) and use the code **6734 3478**

# Draft Engagement Policy Ideas

*View draft actions on page 202 of the TRPA Board Packet*

- Commit to respectfully engaging underserved populations
- Target a percentage of outreach efforts to underserved populations
- Add diverse voices to influential boards and committees
- Remove contracting barriers

Public Participation: Go to [www.menti.com](https://www.menti.com) and use the code **6734 3478**

# Draft Infrastructure Policy Ideas

*View draft actions on page 202 of the TRPA Board Packet*

- Evaluate equity in transportation plans and programs
- Support infrastructure that improves accessibility
- Encourage accessible multimodal transportation options

Public Participation: Go to [www.menti.com](https://www.menti.com) and use the code **6734 3478**

# Draft Access & Technology Policy Ideas

*View draft actions on page 202 of the TRPA Board Packet*

- Improve safety for pedestrians and cyclists
- Continue deployment of Intelligent Transportation System (ITS) solutions



Public Participation: Go to [www.menti.com](https://www.menti.com) and use the code **6734 3478**

# Draft Services Policy Ideas

*View draft actions on page 202 of the TRPA Board Packet*

- Prioritize lifeline services for priority communities, especially seniors and people with disabilities
- Promote quality of services for transportation options
- Support opportunities for crisis training for bus and shuttle drivers



Public Participation: Go to [www.menti.com](http://www.menti.com) and use the code **6734 3478**

## Draft Environment Policy Ideas

*View draft actions on page 202 of the TRPA Board Packet*

- Encourage greater use of transit
- Support regional evacuation and emergency planning





*Breakout  
Session Debrief*

# Next Steps

- Develop draft policies for Governing Board review and endorsement in early summer
- Work to incorporate policies into transportation plan updates (Active Transportation Plan, Public Participation Plan, Regional Transportation Plan, etc.)

Website: <https://arcg.is/1KO4Sa>

**Kira Smith**

Senior Transportation Planner

[ksmith@trpa.gov](mailto:ksmith@trpa.gov)

(775) 589-5236

**Kendall Flint, Project Manager**

DKS Associates

[kendall.flint@dksassociates.com](mailto:kendall.flint@dksassociates.com)

(650) 455-1201



**TAHOE  
REGIONAL  
PLANNING  
AGENCY**

# Governing Board Questions and Discussion

## Agenda Item VI.A

# Public Comment Agenda Item VI.A



# Governing Board Final Comments and Discussion Agenda Item VI.A