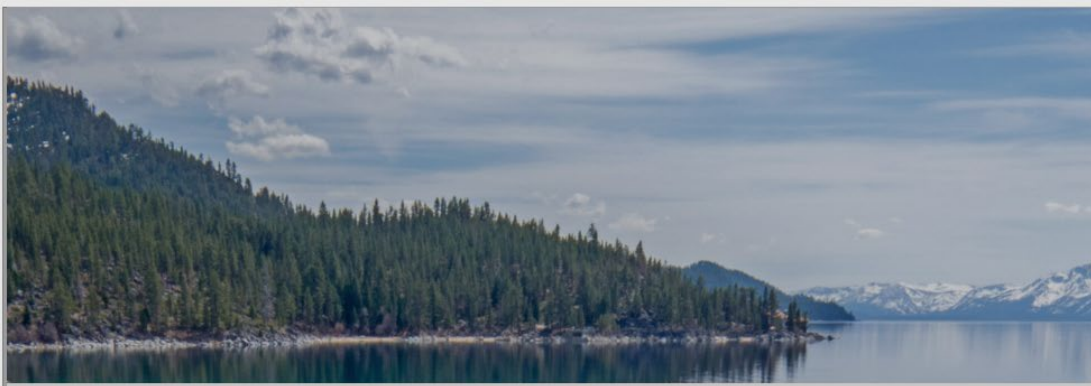




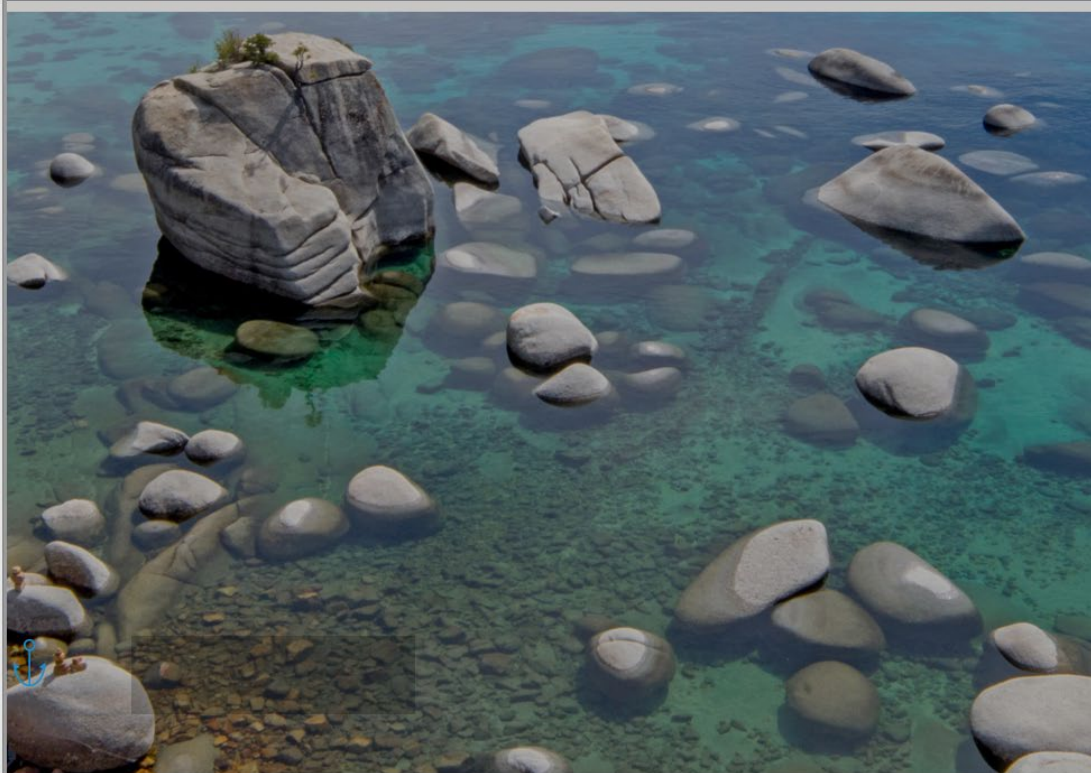
**TAHOE
REGIONAL
PLANNING
AGENCY**



OPERATIONS WORK PLAN

Tahoe Regional Planning Agency

FY 2021-2022



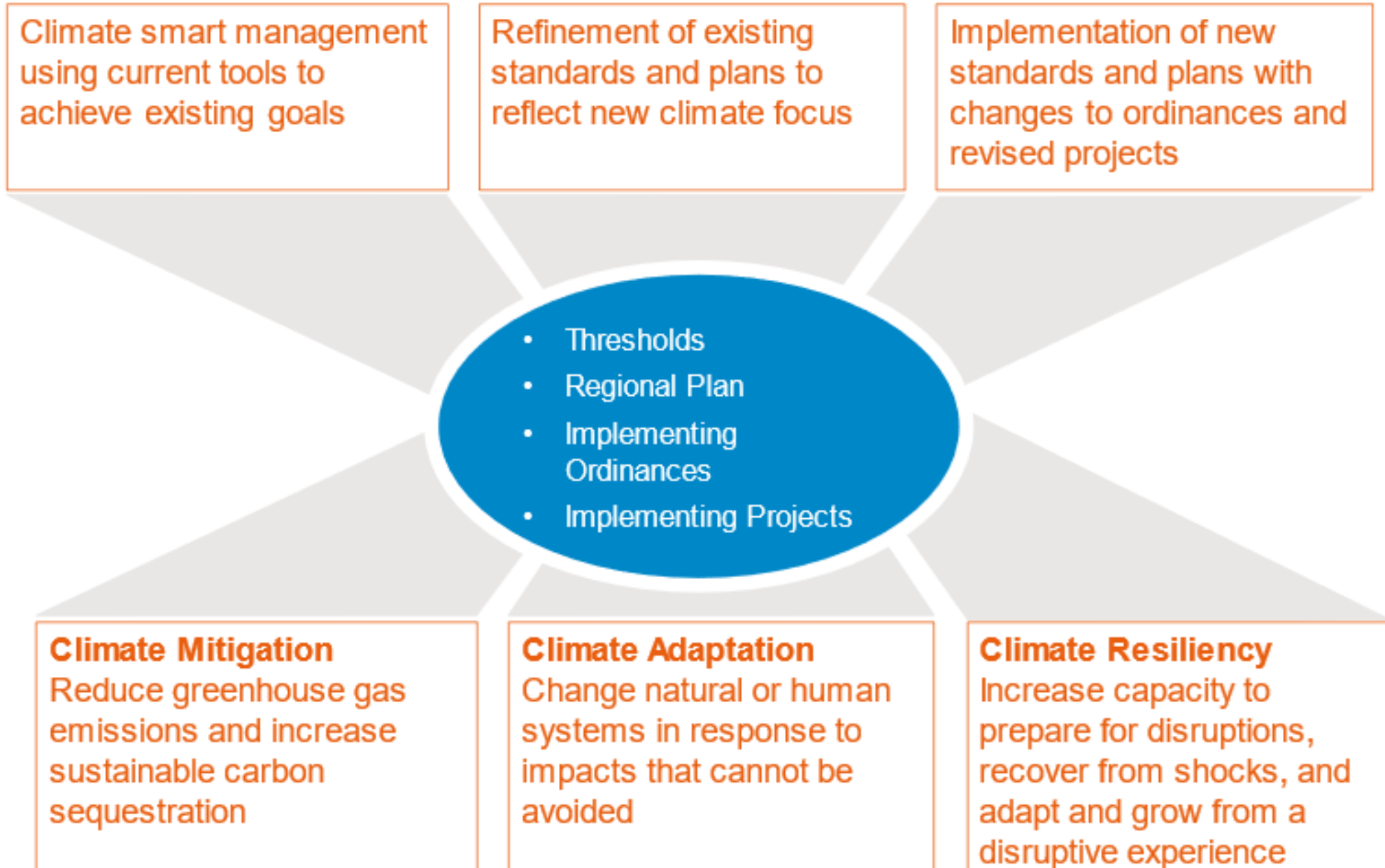
Presentation Overview

Focus on Climate Change

Role of the Work Plan

Strategic Initiatives

Climate Smart Thresholds, Planning, and Implementation





Strategic Initiatives

	Strategic Objectives (Pillars)			
Strategic Initiative	Accelerate Threshold Attainment	Be a Leader in Sustainability	Use Best Science	Operate as High Performance Team
Climate Change and Sustainability	●	●	●	
Transportation and Sustainable Recreation	●	●		
Housing and Community Revitalization		●		●
EIP Implementation	●	●		
Thresholds and Monitoring Update		●	●	
Innovation Initiative		●		●

Strategic Objectives (Pillars)

- Accelerate Threshold Attainment (ATA)
- Be a Leader in Sustainability (BLS)
- Use Best Science (UBS)
- Operate as a High Performance Team (OHT)

Role of the Operations Work Plan

Strategic Initiatives

- Climate Change and Sustainability
- Transportation and Sustainable Recreation
- Housing and Community Revitalization
- EIP Implementation
- Thresholds and Monitoring Update
- Innovation Initiative

Operations Work Plan

- Strategic Initiatives
- Core Activities

Annual Budget

Climate Change and Sustainability Initiative

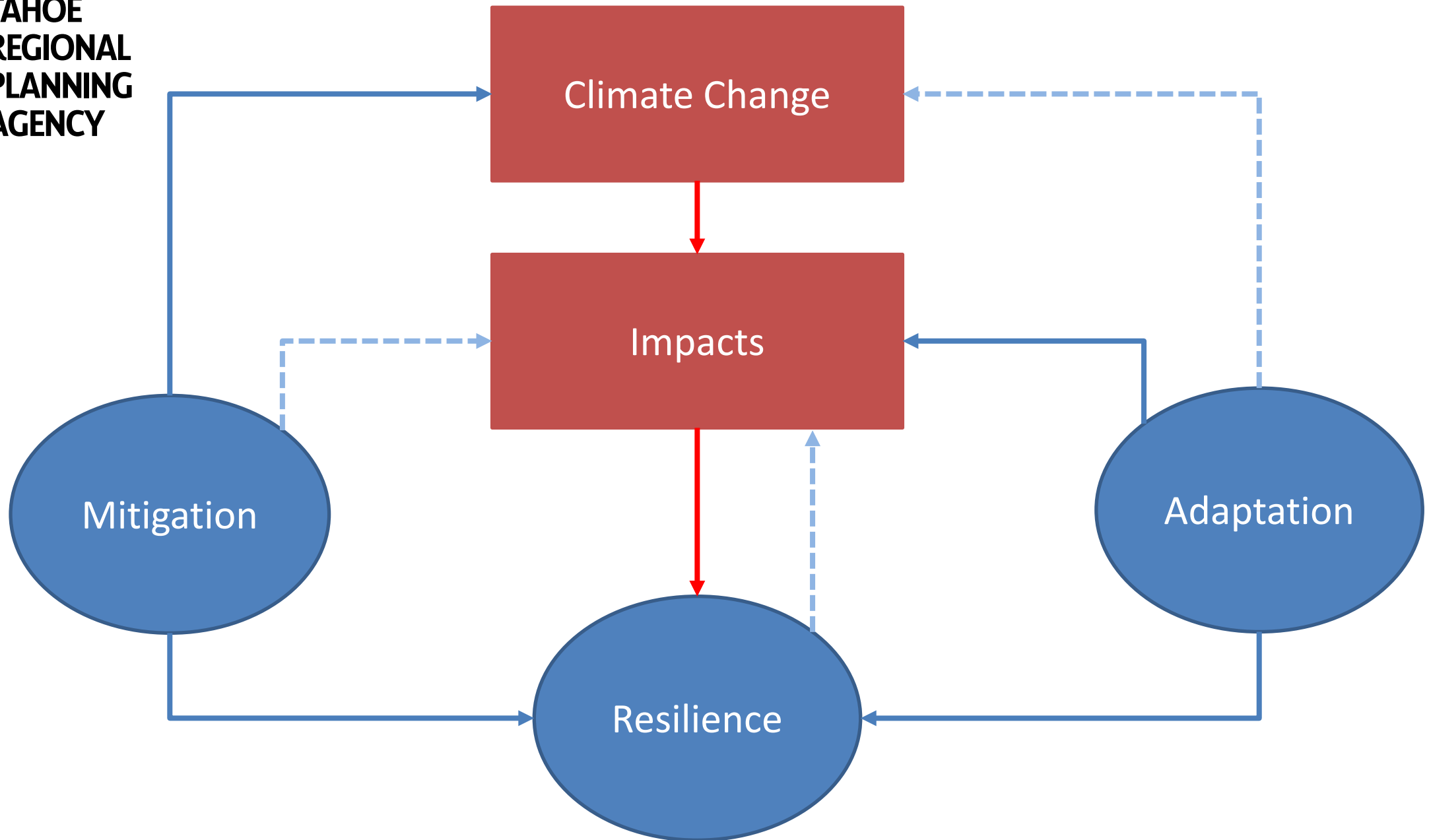
TAHOE IN DEPTH

Protecting, Enjoying & Exploring the Lake Tahoe Basin

Fall 2021 ■ Issue #20



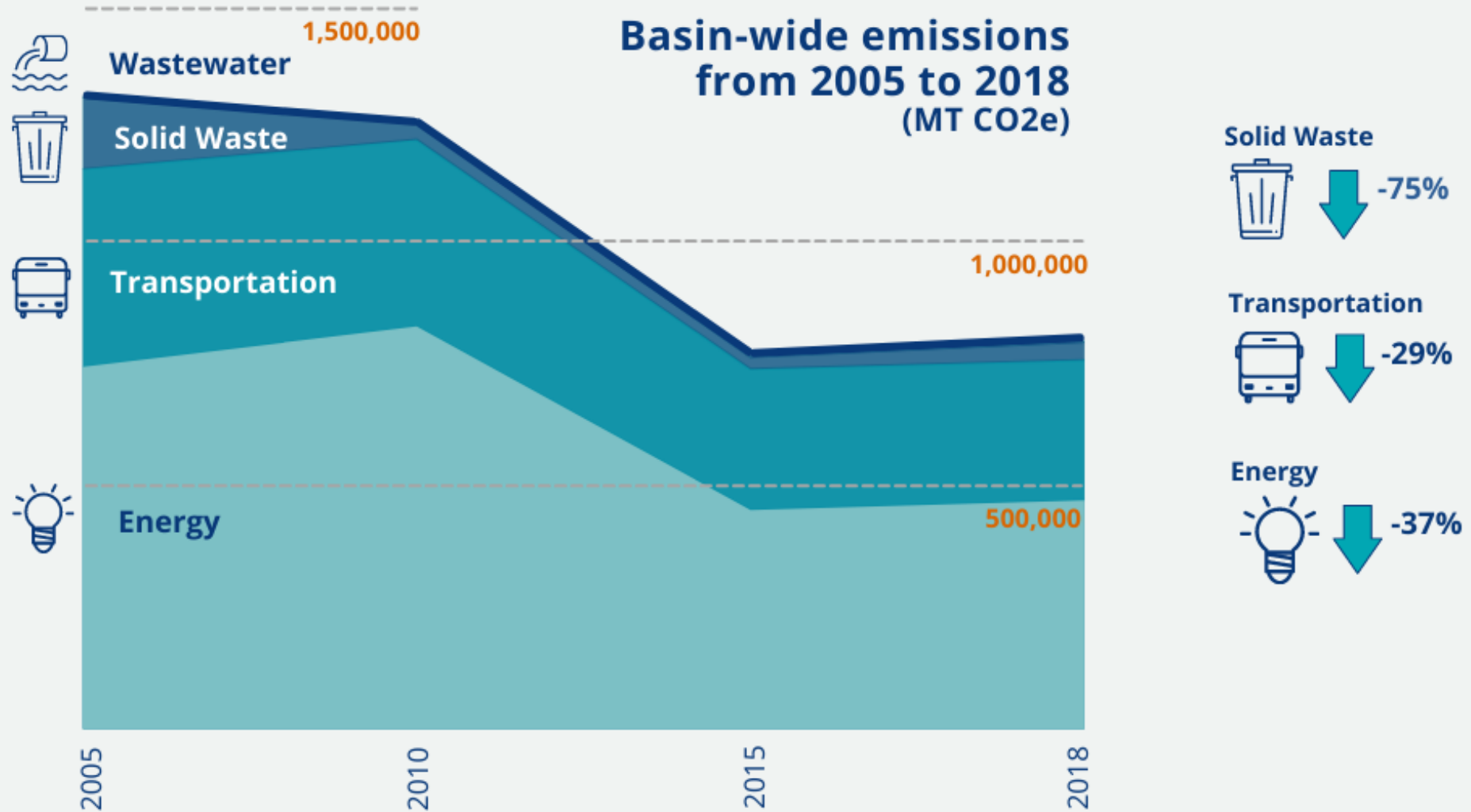
CALDOR'S MENACING MARCH



TOTAL 2018 GREENHOUSE GAS EMISSIONS: ~800,000 MT CO₂e

Over half of the emissions in the Lake Tahoe Basin come from energy. Energy + transportation account for over 95% of total emissions in the basin.

Emissions decreased from 2005 to 2018, but slightly increased from 2015 to 2018.



Greenhouse Gas Reduction Targets

15% GHG reduction
by 2020 (met in 2018)

49% reduction by 2035

Net-zero by 2045

2020

2035

2045

2050

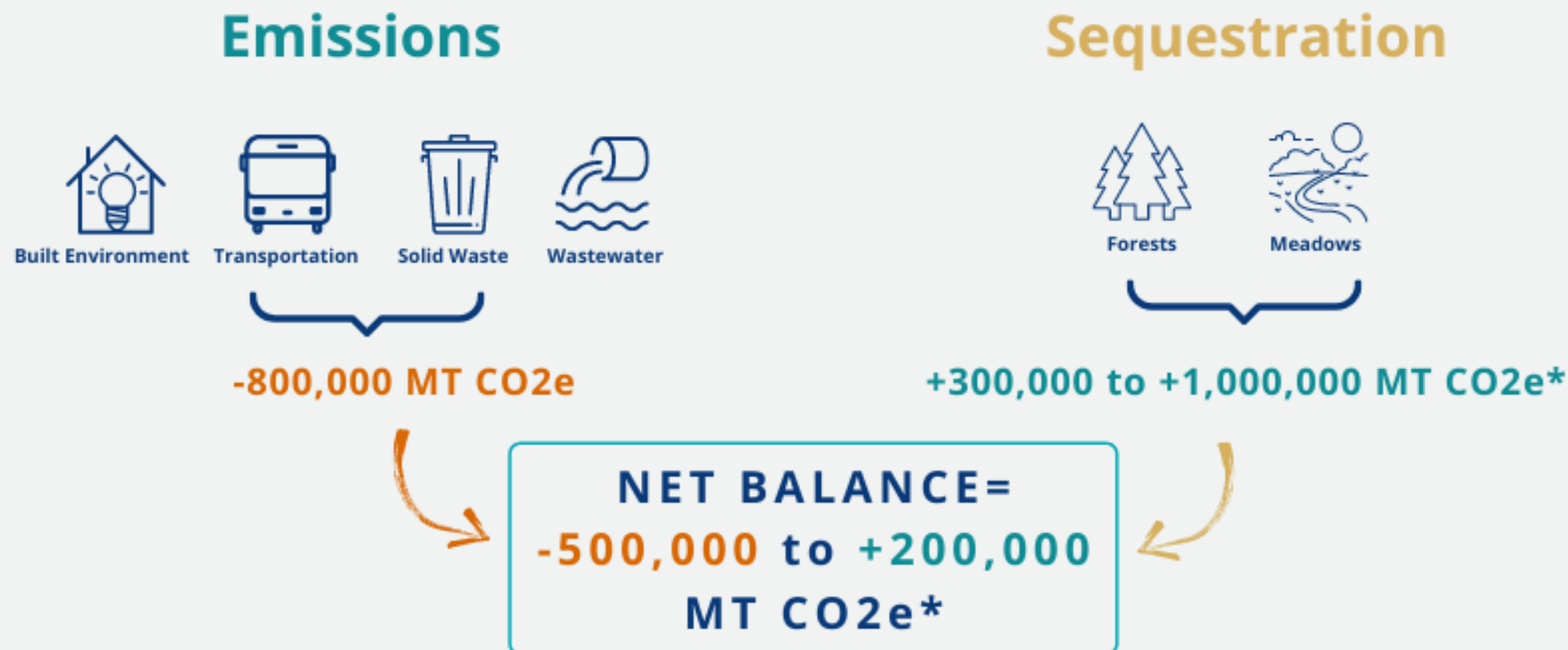
California:
Carbon Neutral
by 2045

Nevada:
Net-Zero
by 2050

REDUCING EMISSIONS IS CRUCIAL

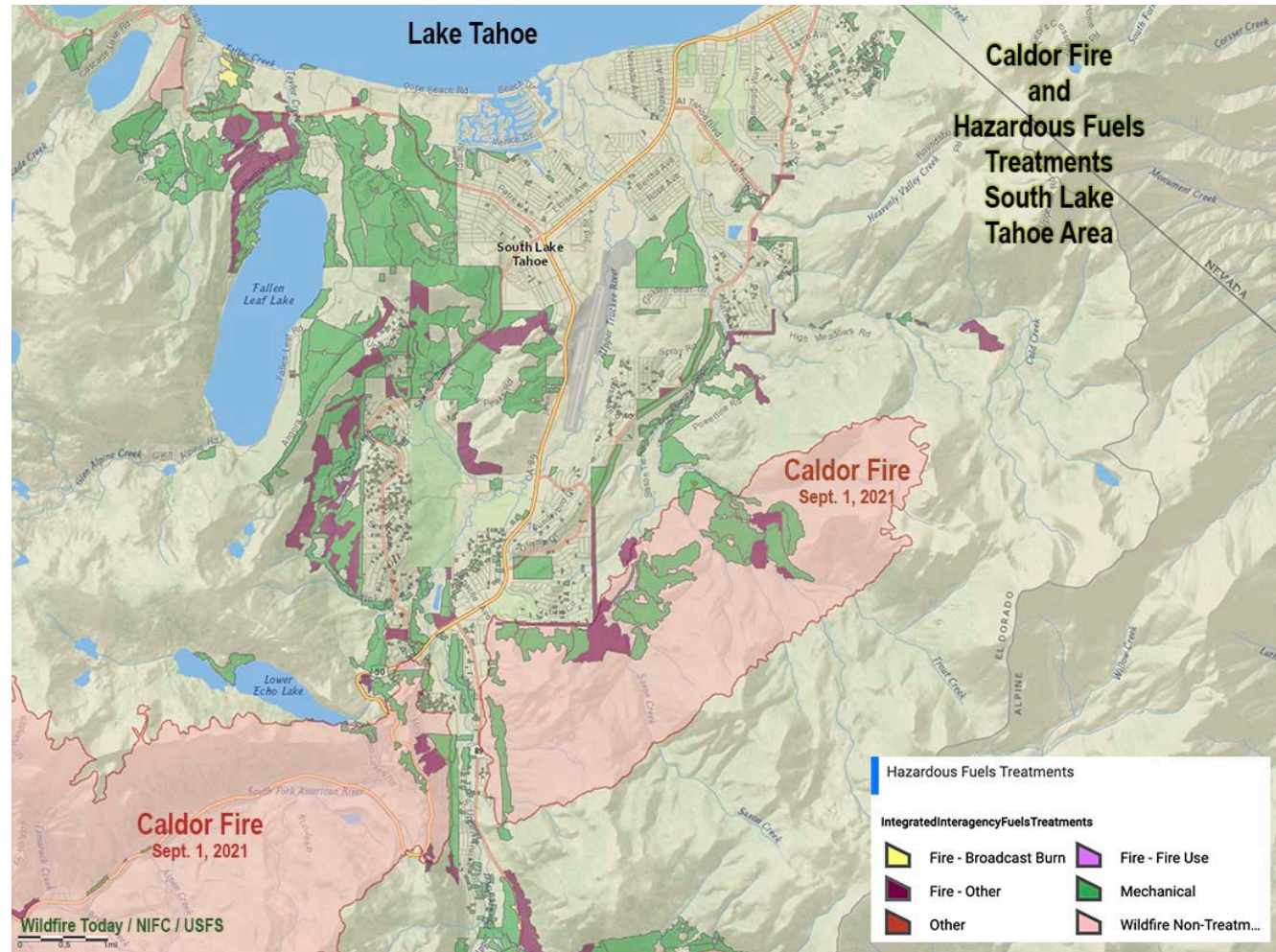
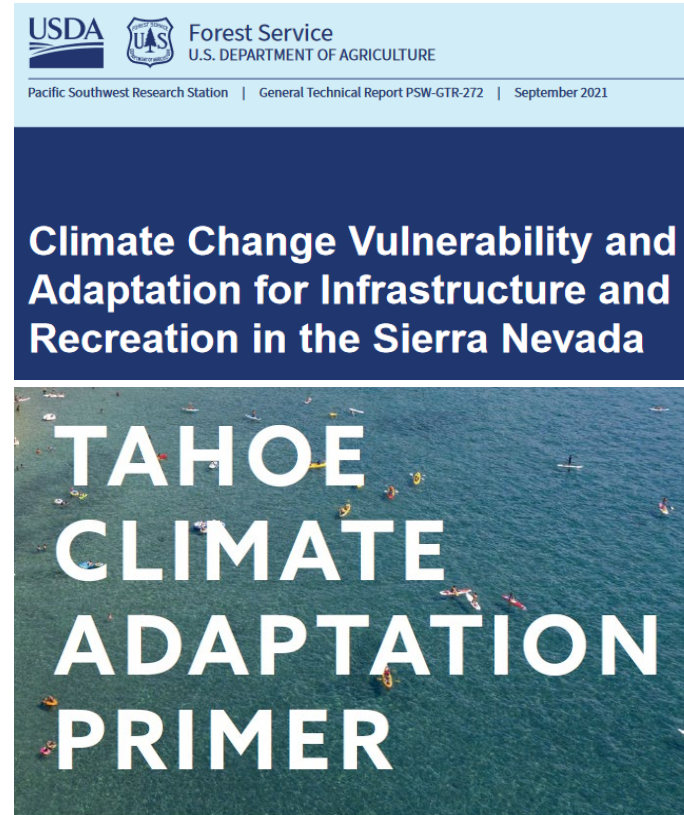
If no further action is taken to continue reducing emissions, overall emissions in the basin are forecast to increase 5.7% by 2045.

CARBON ACCOUNTING BALANCE (2018)



*The wide range in 2018 carbon sequestration values for the Tahoe Basin is a result of the variation in forest carbon outputs compared in this analysis, as well as unknown meadow condition status.

Climate Adaptation

USDA Forest Service U.S. DEPARTMENT OF AGRICULTURE

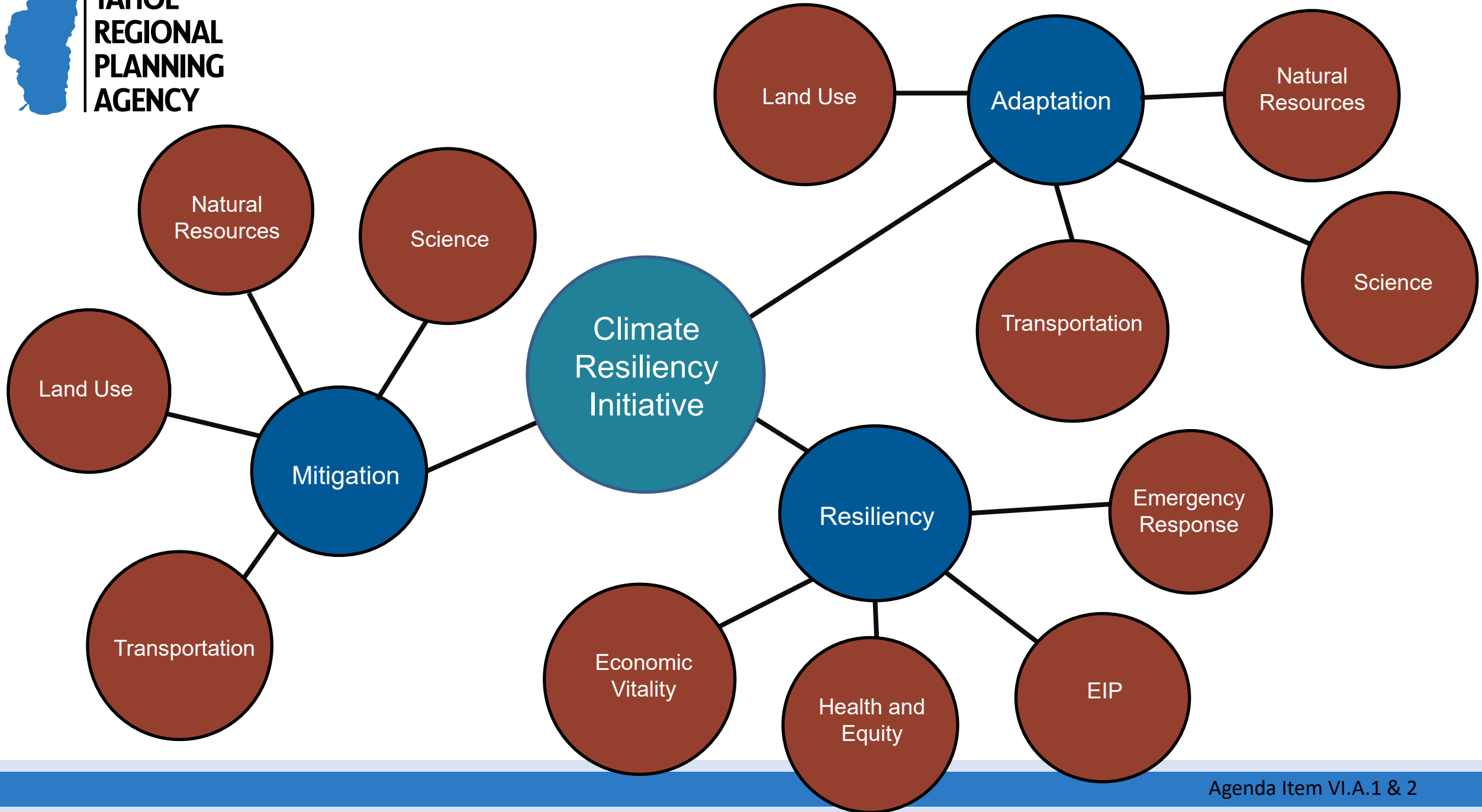
Pacific Southwest Research Station | General Technical Report PSW-GTR-272 | September 2021

Climate Change Vulnerability and Adaptation for Infrastructure and Recreation in the Sierra Nevada

TAHOE CLIMATE ADAPTATION PRIMER



CALIFORNIA CLIMATE ADAPTATION STRATEGY



A Blueprint for Climate Resilience



**WATERSHEDS AND
WATER QUALITY**

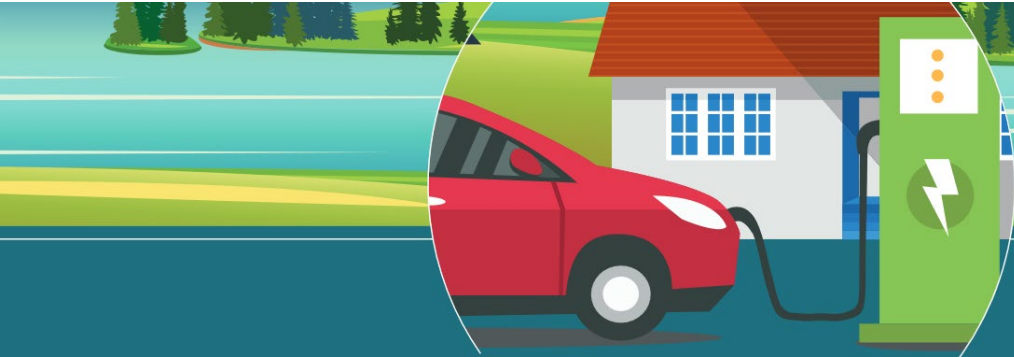
FOREST HEALTH

**SUSTAINABLE
RECREATION AND
TRANSPORTATION**

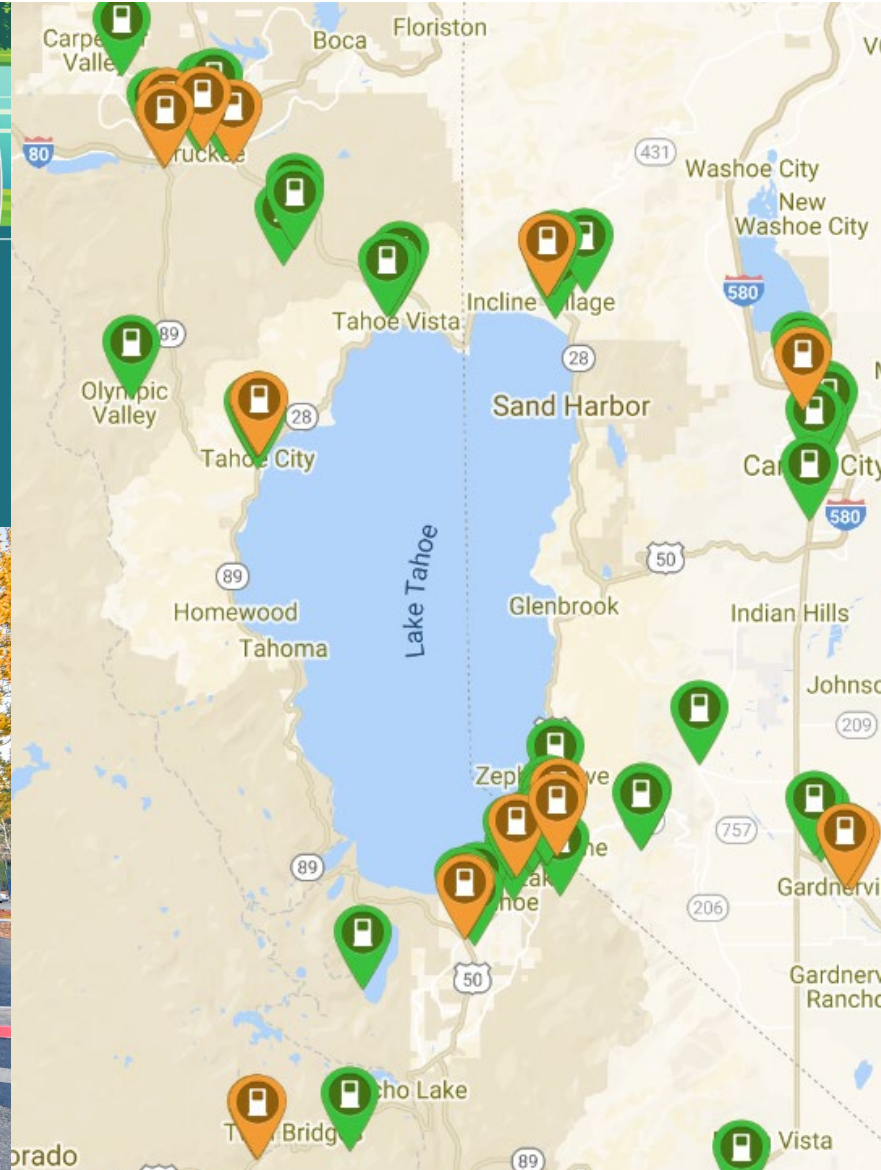
**SCIENCE,
STEWARDSHIP, AND
ACCOUNTABILITY**



Transportation



Tahoe-Truckee Plug-in
Electric Vehicle Readiness Plan



67

Charging Locations

157

Stations



50%

since 2017

5

Electric Buses

Sustainable Recreation and Tourism

FITURE
OF TOURISM



Housing



Sugar Pine Village

Thresholds



Harmonize Across Plans



Lake Tahoe Sustainable Communities Program Documents Series #3

Sustainability Action Plan:

A Sustainability Action Toolkit for Lake Tahoe

December 2013



PUBLIC LAW 96-551 – DEC. 19, 1980

Public Law 96-551
96th Congress

To grant the consent of the Congress to the Tahoe
Secretary of Agriculture and others to cooperate w

Be it enacted by the Senate and House of Represent
assembled, That in order to encourage the wise use
the resources of the area around said lake, the cons
Regional Planning Compact heretofore adopted by
reads as follows:

TAHOE REGIONAL

ARTICLE I - FINDINGS AN

(a) It is found and declared that:

(1) The waters of Lake Tahoe and
deterioration or degeneration, which endan
the region.

(2) The public and private interest

(3) The region exhibits unique env
irreplaceable.

(4) By virtue of the special conditions and circumstances of the region's natural ecology,
developmental pattern, population distributions and human needs, the region is experiencing
problems of resource use and deficiencies of environmental control.

(5) Increasing urbanization is threatening the ecological values of the region and
threatening the public opportunities for use of the public lands.

(6) Maintenance of the social and economic health of the region depends on maintaining
the significant scenic, recreational, educational, scientific, natural public health values provided
by the Lake Tahoe Basin.

(7) There is a public interest in protecting, preserving and enhancing these values for the
residents of the region and for visitors to the region.

(8) Responsibilities for providing recreational and scientific opportunities, preserving
scenic and natural areas, and safeguarding the public who live, work and play in or visit the
region are divided among local governments, regional agencies, the States of California and
Nevada, and the Federal Government.

Pathway to Climate Resiliency

Objective 1: Regional Collaboration

- Environmental Improvement Program

Objective 2: Integration and Adaptive Management

- Operations Work Program
- Sustainability Code Package

Objective 3: Education, Engagement, Equity

- Transportation Equity Study

Objective 4: Science, Data, and Monitoring

- Lake Tahoe Information
- Thresholds

QUESTIONS