

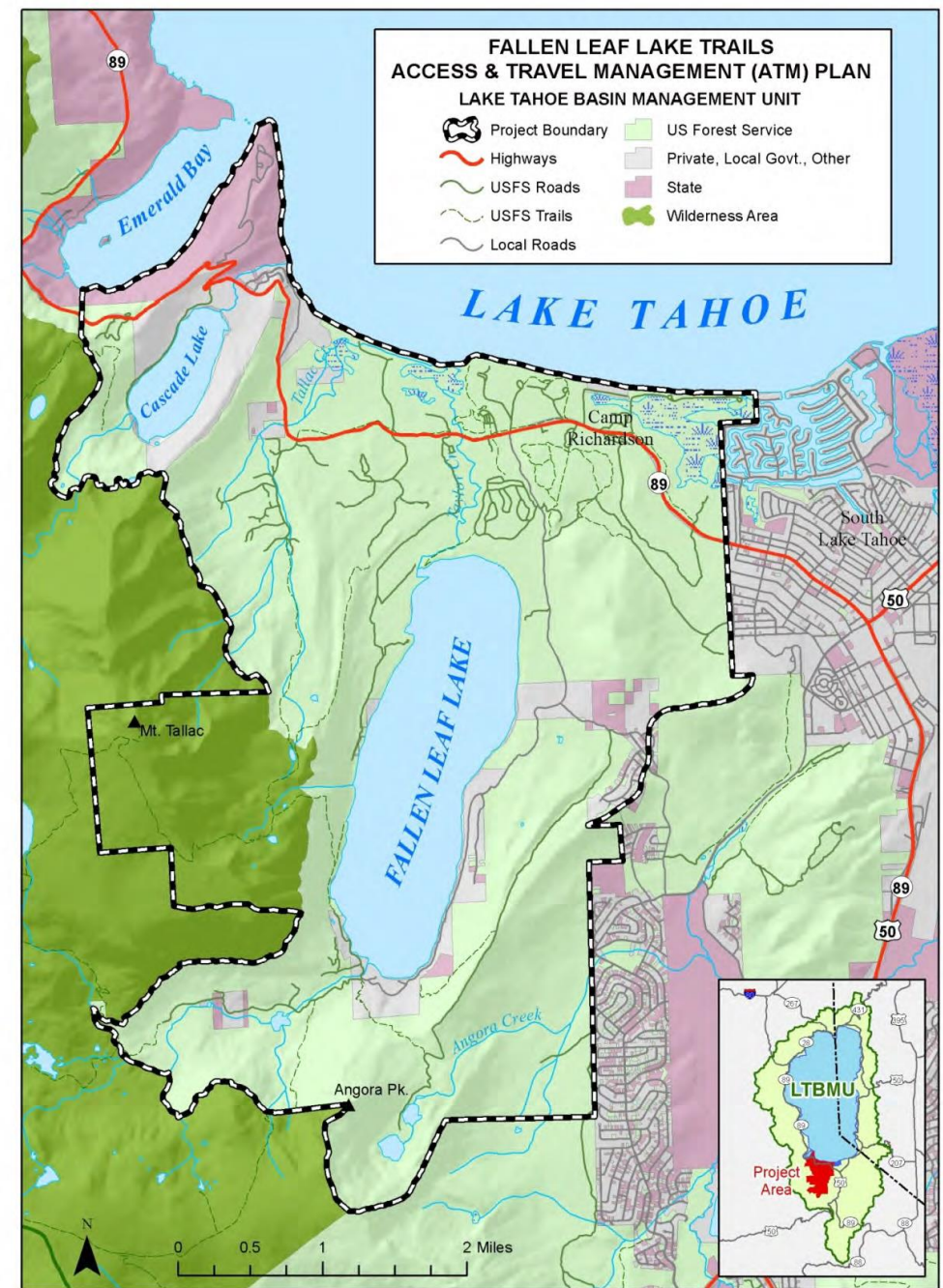
Lily Lake Trail  
Recreation Environmental Improvement  
Program project  
EIP # 03.02.02.0082

January 24, 2023



## Fallen Leaf Lake Trails Access and Travel Management Environmental Assessment

- Public Scoping 11/2011
  - 159 comment letters
- Draft EA 9/2012
  - 69 comment letters
- Finding of No Significant Effect (FONSE) and Forest Supervisor Decision 9/2013
- Lily Lake Trail Constructed in 2021





# Fallen Leaf Lake Trails Access and Travel Management EA



## Existing Trails in the Fallen Leaf Lake

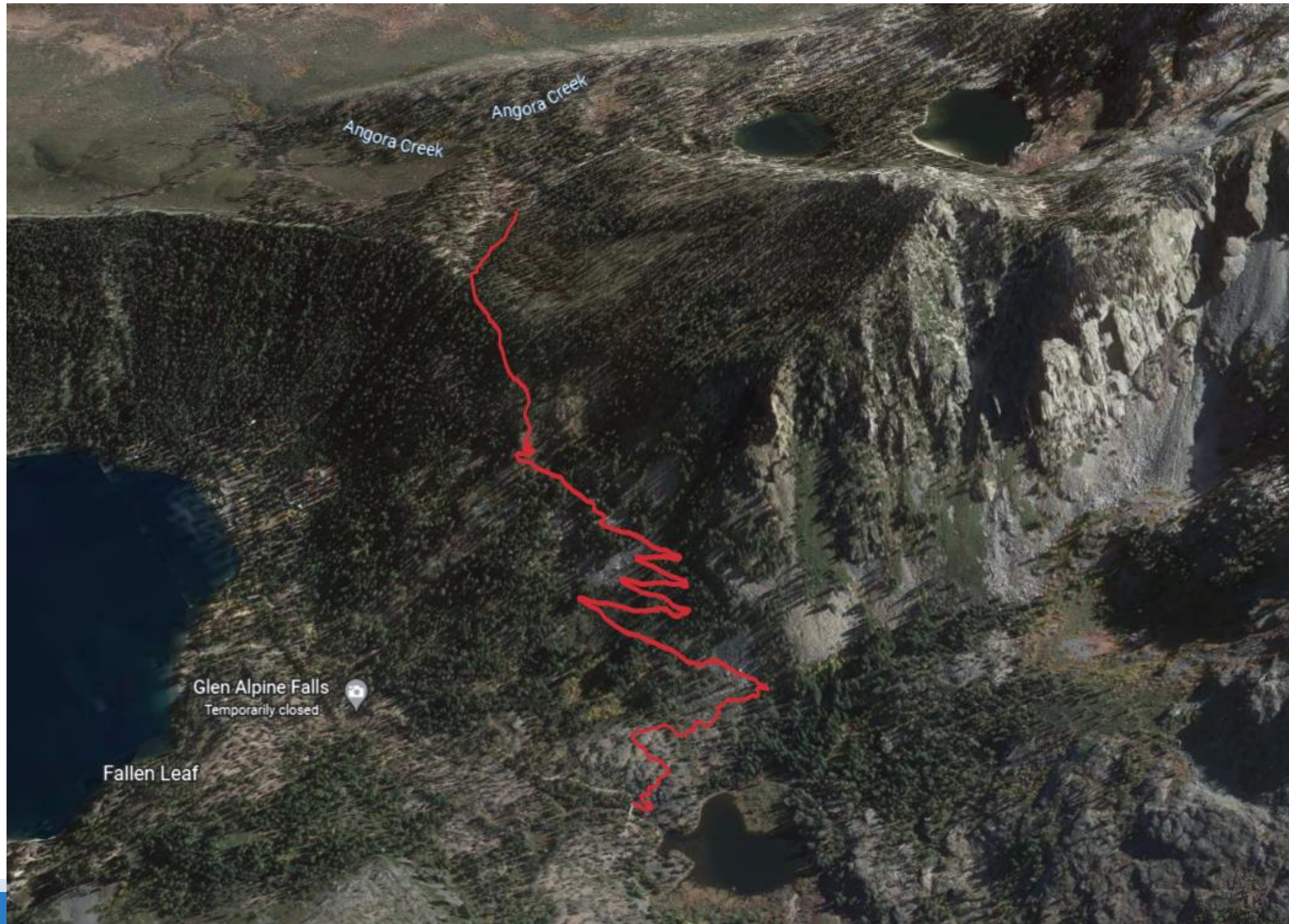
Authorized Trails	23.7 miles
Unauthorized Trails	21.5 miles
Total Trails	45.2 miles

## Proposed Action

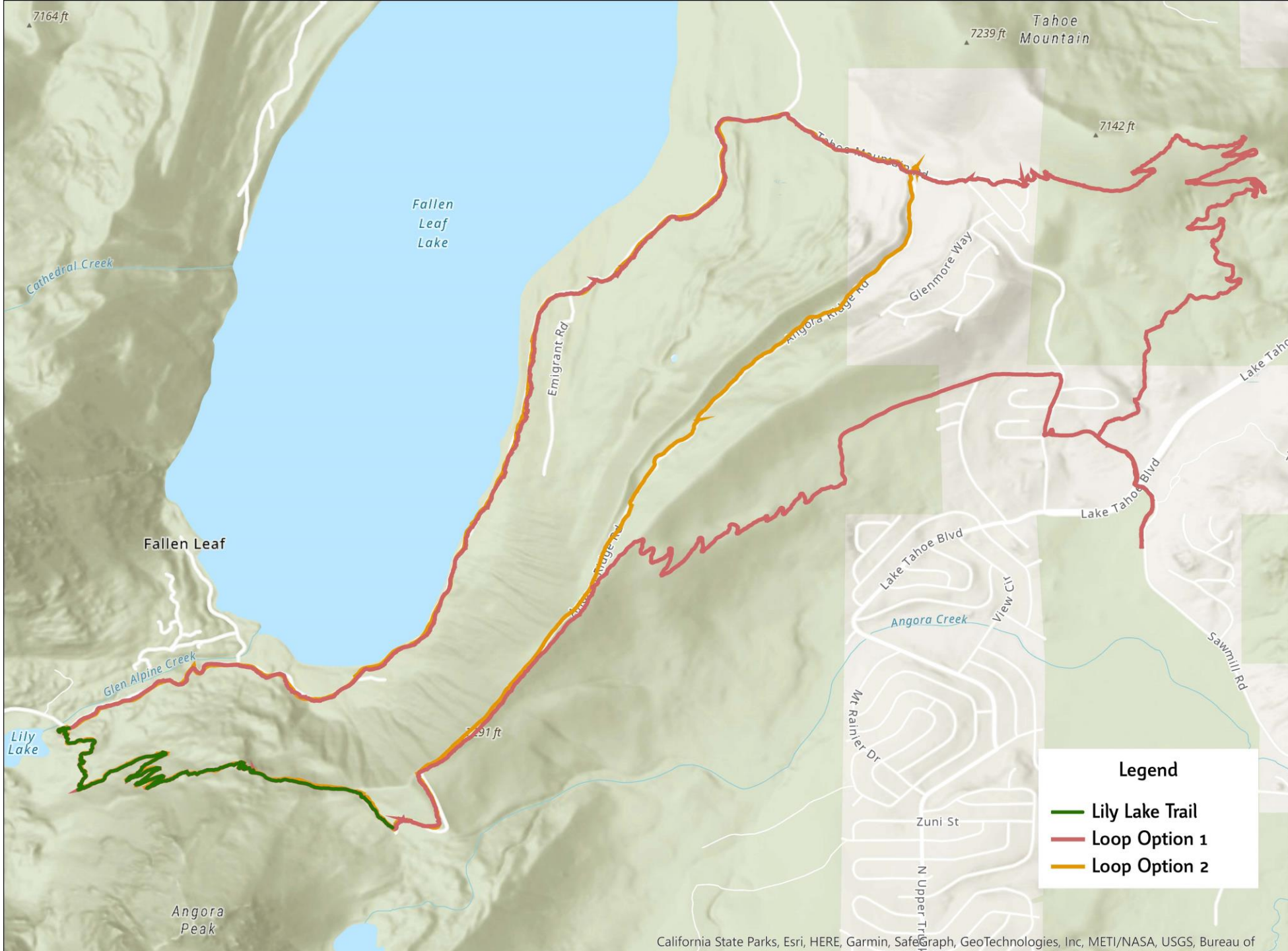
Adopt/Upgrade	9.3 miles
Decommission	12.4 miles
Reconstruction	5.7 miles
New Construction	12.1 miles



# Lily Lake Trail route







**Legend**

- Lily Lake Trail
- Loop Option 1
- Loop Option 2

# TRPA and Forest Service Coordination

- 2021 construction
- May 2021 TRPA staff and Forest Service site visit
- Multiple meetings and communication with stakeholders
- Trail built through a partnership between the US Forest Service and the Tahoe Area Mountain Bike Association (TAMBA)



## TAMBA Mission

- TAMBA is a volunteer driven, non-profit organization that builds, maintains, and advocates for multi-use trails in the Lake Tahoe Basin while providing education to all trail users.
- TAMBA is dedicated to the stewardship of sustainable, multi-use trails and preserving access for mountain bikers through advocacy, education and responsible trail use.
- Forest Service relies on partnerships with organization such as TAMBA



# Lily Lake Trail





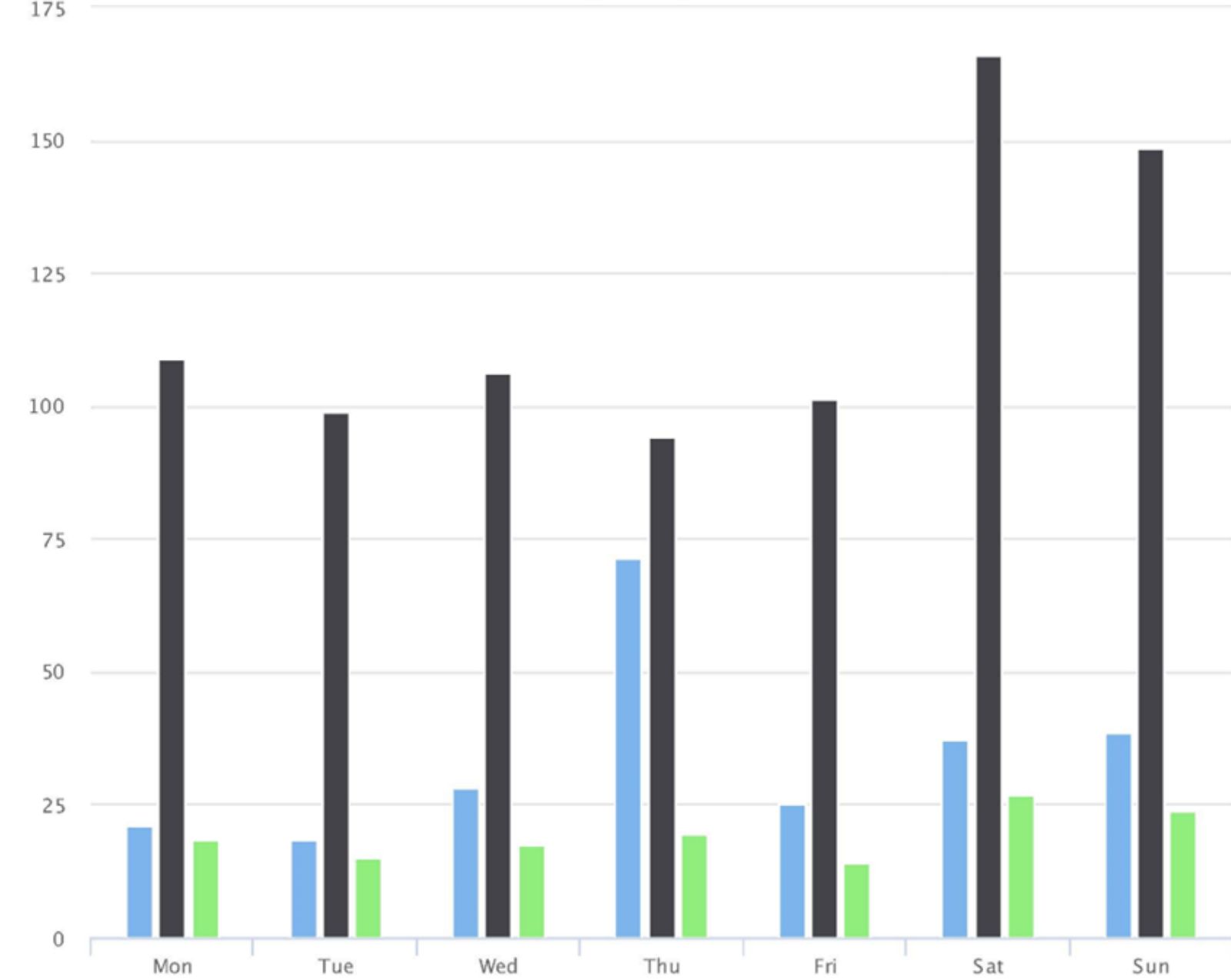
# Examples of other multi-use trail projects



Van Sickle Trail



January 24, 2023



## Trail Counter Data May 2022 - August 2022

Site Name	Average	Median	STDV	Min	Max
Christmas Valley	34.3	28.3	16.7	18.5	71.4
Corral Trail	117.7	106.1	25.9	94.1	166.1
Lily Lake	19.3	18.3	4.2	14.1	26.8

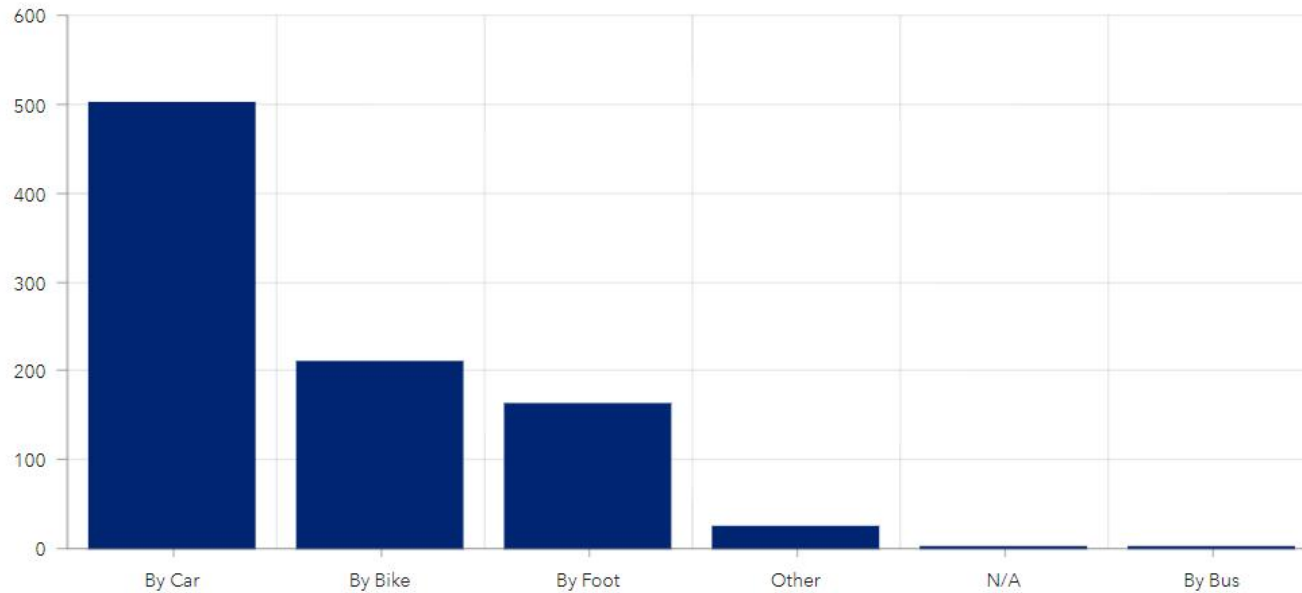


## Recent Recreation Use Survey

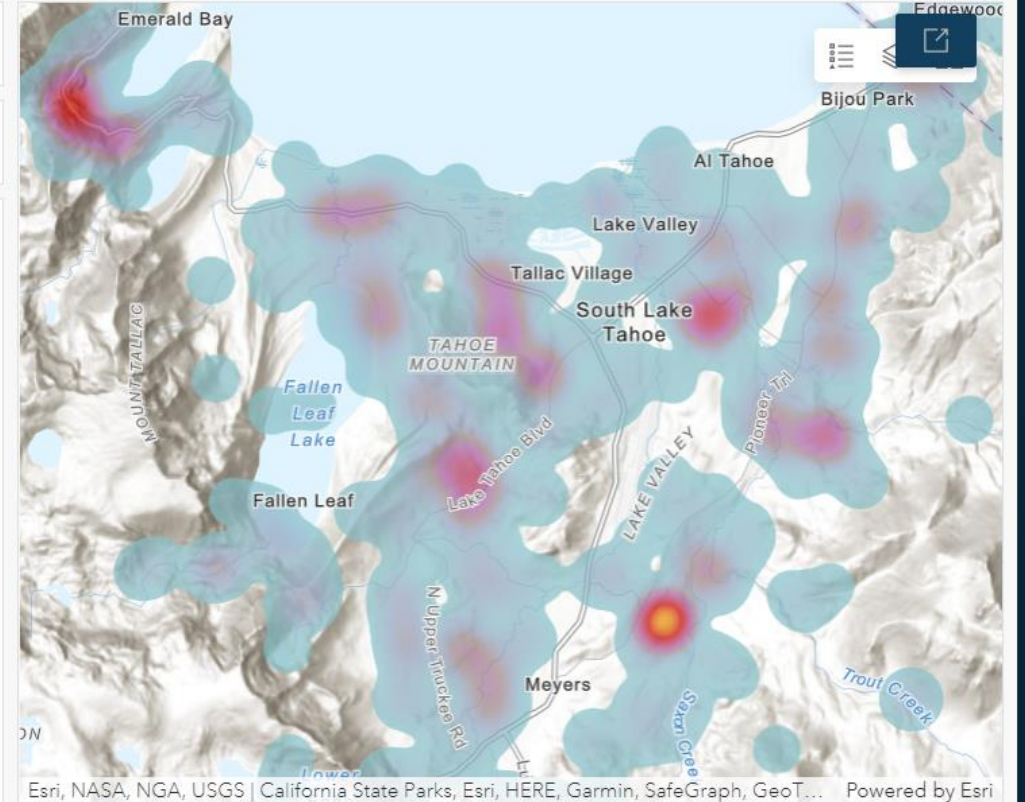
**903**  
responses

Full-Time Resident  
532  
Day Visitor  
106

Seasonal Resident  
154  
Overnight Visitor  
76



How do you typically get to trails?



Where do you access trails most often?



January 24, 2023



# Trail Planning and Coordination

- Updates to the Forest Service Lake Tahoe Basin Management Unit and TRPA Memorandum of Understanding (MOU)
- Tahoe Regional Trails Strategy
- Tracking through Environmental Improvement Program



# Lily Lake Trail Permit Motions

## Agenda Item VIII.C

- A motion to approve the required findings including a finding of no significant effect as shown in Attachment A.
- A motion to approve the proposed project subject to the conditions contained in the in the draft permit as shown in Attachment B.