

Tahoe Climate Resilience Dashboard

Governing Board
May 22, 2024





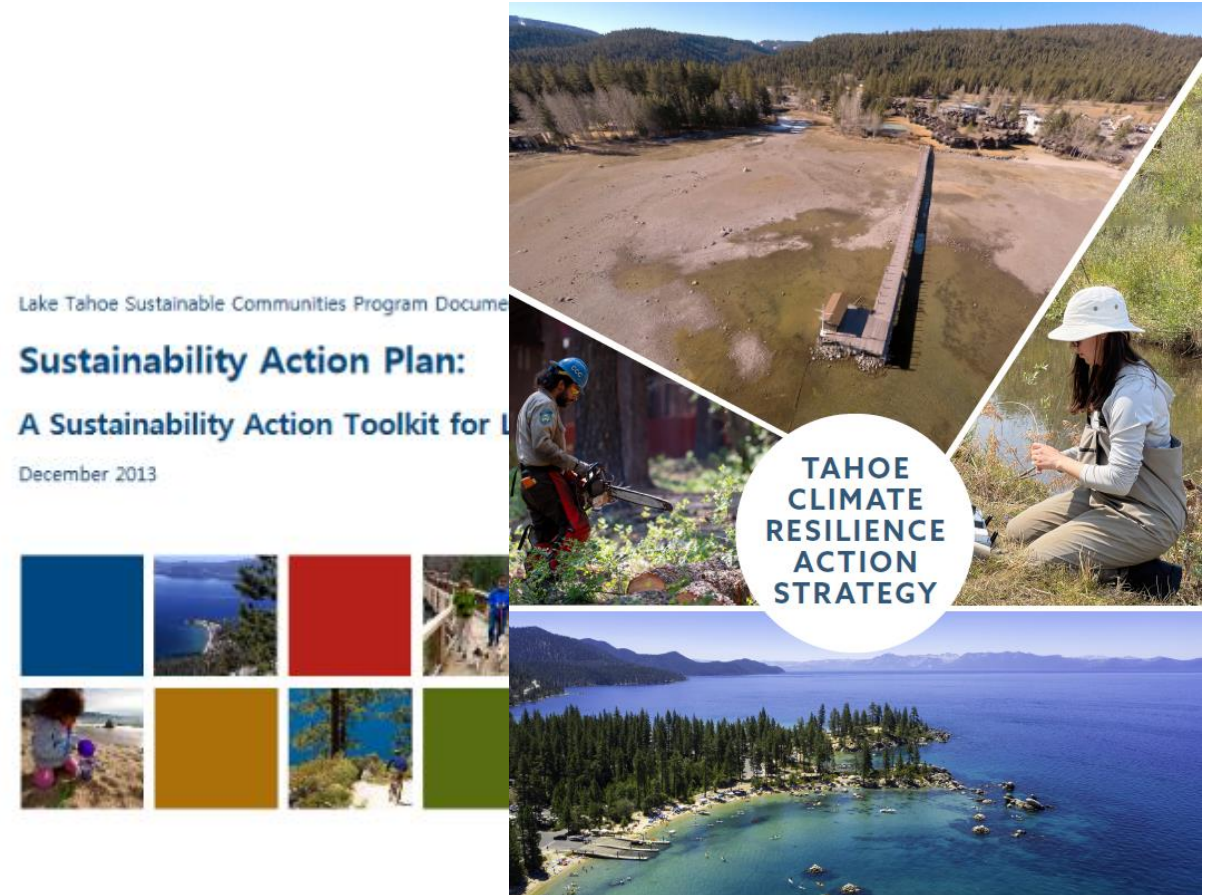
Restoration and Resilience Strategic Priority

- Regional Goals:

- Carbon neutral by 2045
- Climate resilient lake and communities

- Current Priorities:

- Implementing the climate action strategy
- Climate resilience code update
- Electric vehicle data and siting analysis
- PROTECT Grant – Resilience Improvement Plan



Dashboard Goals

- Provide **reporting and engagement tool** for climate action.
- Better understand current **challenges, opportunities, & priorities**.
- Increase **public transparency and participation** in climate action.
- Track climate action in relation **to state and federal goals**.



Funding provided by the California Tahoe Conservancy

Engagement Summary

- 28 Stakeholders Engaged
- 13 Interviews
- In-Person Workshop
- Indicators Survey

Public Launch:

- Press Release
- Social Media

“I work with data visualization, and this dashboard's storyboard approach with interactive visuals ran much smoother than other applications I've seen. Great work!” –
Dashboard User

lake tahoe INFO

Connecting people with information to improve decision making and sustain investments in the Lake Tahoe Basin.

CLIMATE RESILIENCE DASHBOARD

Explore climate resilience indicators



EIP PROJECT TRACKER



LAKE CLARITY TRACKER



MONITORING DASHBOARD



PARCEL TRACKER



THRESHOLD DASHBOARD



TRANSPORTATION TRACKER

Explore More

Mooring Permitting and Registration is live. [Click here to register.](#)

S NEW



5/10/2024

20 parcels were updated in the Parcel Tracker



5/8/2024

15 EIP Projects were updated



5/7/2024

"South Lake Tahoe Chipping Program" added to the EIP 5-Year Project List



5/3/2024

20 parcels were updated in the Parcel Tracker

Climate Resilience Dashboard

Lake Tahoe's fragile alpine environment is already experiencing the impacts of climate change. These climate impacts include severe droughts, flooding, warming temperatures, increased risk of wildfire, and more. The Tahoe Regional Planning Agency and partners are implementing climate resilience projects across the region through the [Lake Tahoe Environmental Improvement Program \(EIP\)](#) and the [Climate Resilience Action Strategy](#). Climate resilience projects will advance equity, create jobs, and build resilience for the Tahoe Basin's extraordinary natural resources, people, and visitors.

The Climate Resilience Dashboard tracks progress toward building climate resilience across four long-term goals and associated indicators. Measuring progress toward resilience supports the ongoing process of anticipating, preparing for, and adapting to climate change through comprehensive climate resilience strategies. **Click the icons below the goals to learn about ongoing work and key ways we are tracking progress.**

Climate Resilience Goals & Outcomes

Goal 1: Track Changing Climate Conditions



Greenhouse Gas Emissions



Air Quality and Extreme Heat



Lake Conditions

Goal 2: Support a Resilient Environment



Forest Resilience and Wildfire Risk



Aquatic Invasive Species



Watershed Resilience

Goal 3: Promote a Resilient Built Environment



Access to Housing



Renewable Energy



Transportation

Goal 4: Increase Community Resilience



Demographics and Workforce



Economic Resilience



Wildfire Resilience

Goal 1: Tracking Changing Climate Conditions



Greenhouse Gas Emissions



Air Quality and Extreme Heat

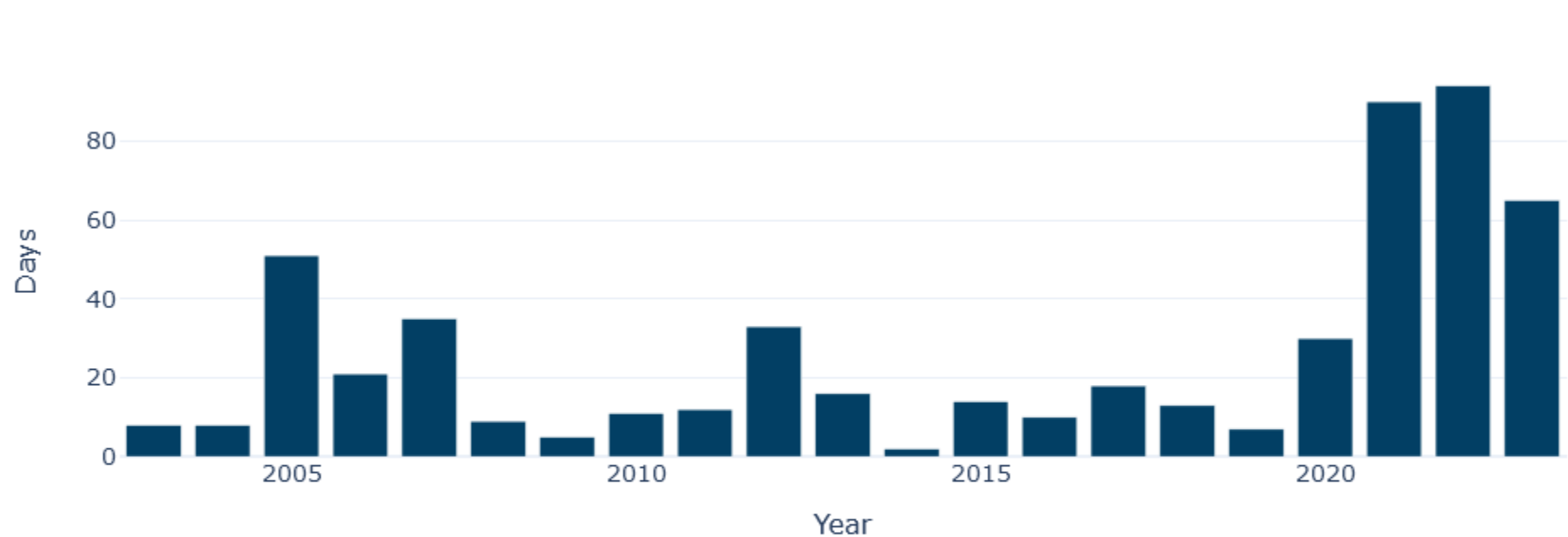


Lake Conditions



Precipitation and Extreme Storms

of Extreme Heat Days in Tahoe (over 85°F)



Temperature: Extreme Heat Days

Meteostat Developers. (2022, February 18). Python Library. <https://dev.meteostat.net/python/>

Goal 2: Support a Resilient Environment



Forest Resilience and Wildfire Risk



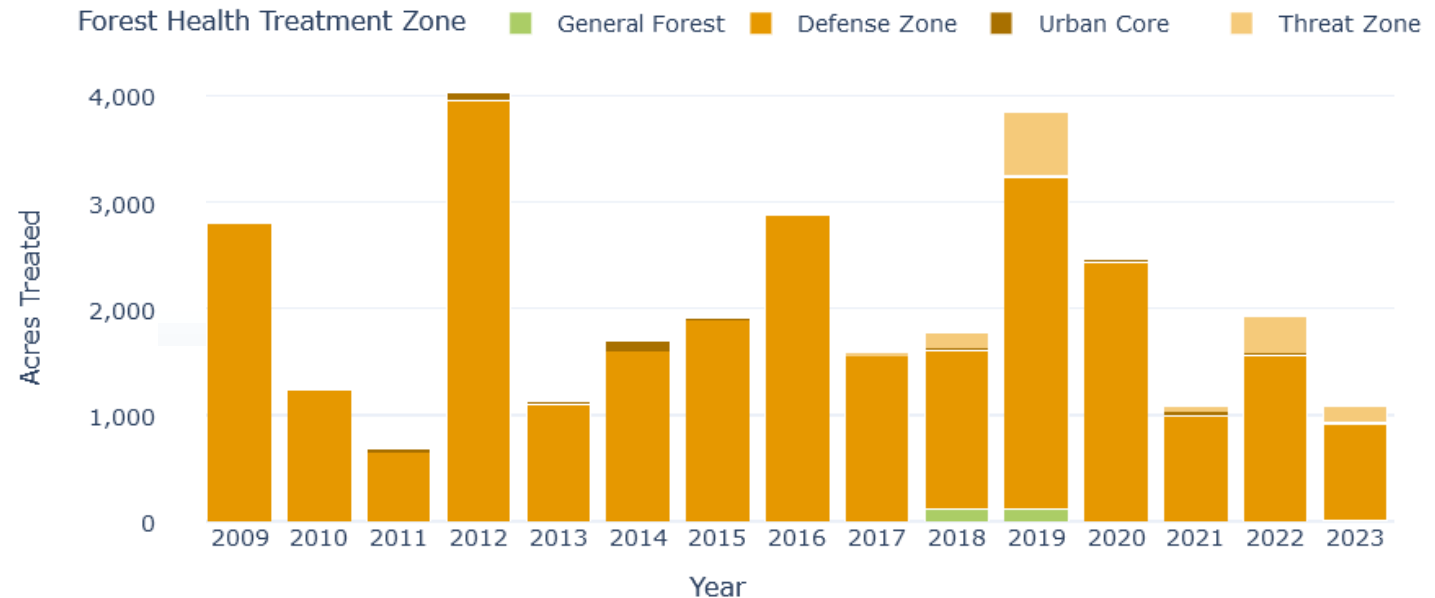
Aquatic Invasive Species



Watershed Resilience

Acres of Forest Fuels Treatments for Wildfire Risk Reduction

Treating forests involves reducing the amount of fuel created by trees and other vegetation. From 2012-2024, over 37,000 acres of forest have been treated to mitigate wildfires in the Tahoe Basin, with the greatest areas in Community Defense Zones (strips that are generally ¼ mile wide or more surrounding the urban core and in close proximity to communities). These Community Defense Zones represent the Community Wildfire Protection Wild-Urban Interface (WUI).



Goal 3: Promote a Resilient Built Environment



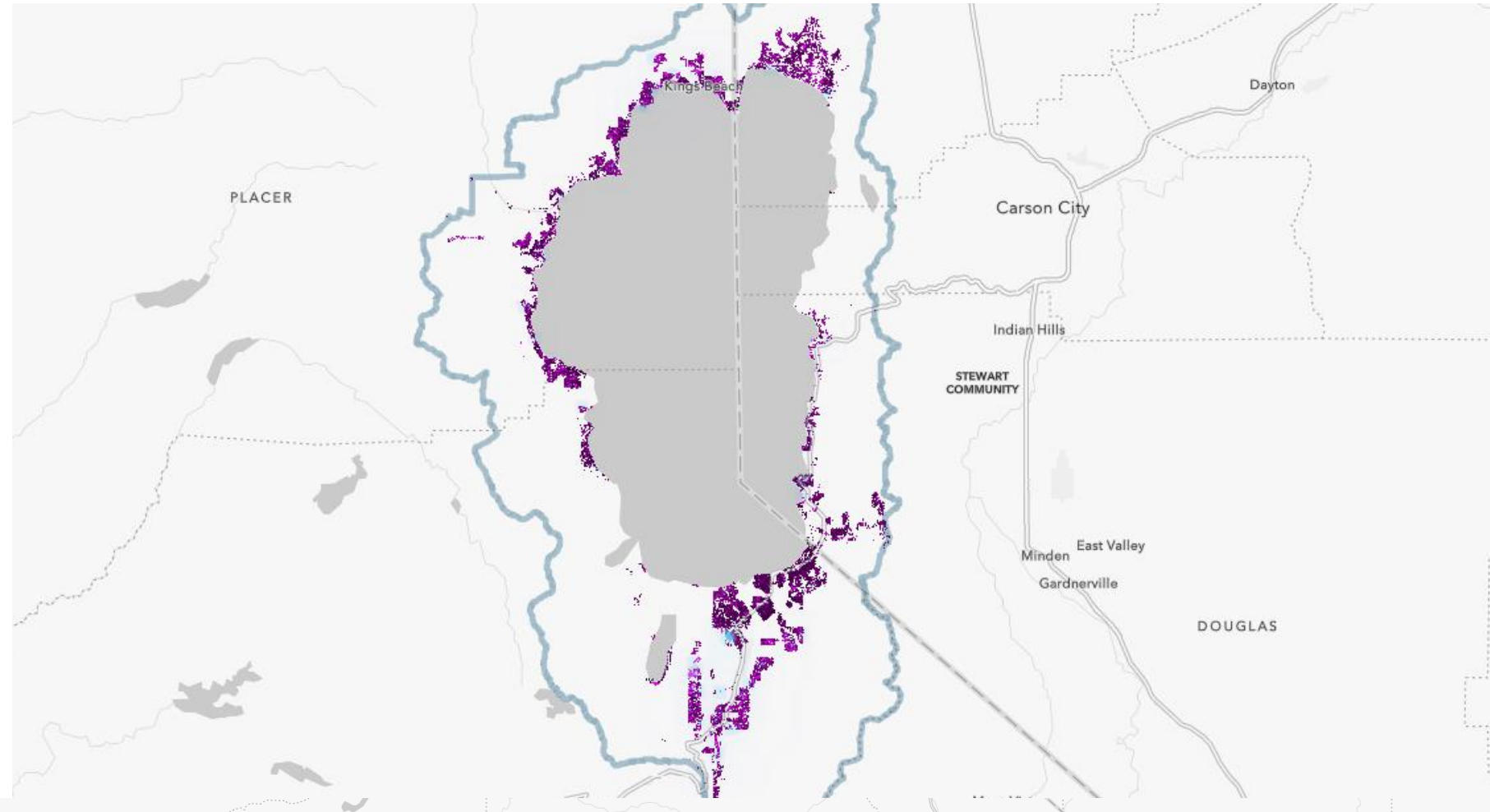
Access to Housing



Renewable Energy



Transportation



Goal 4: Increase Community Resilience



Demographics and Workforce



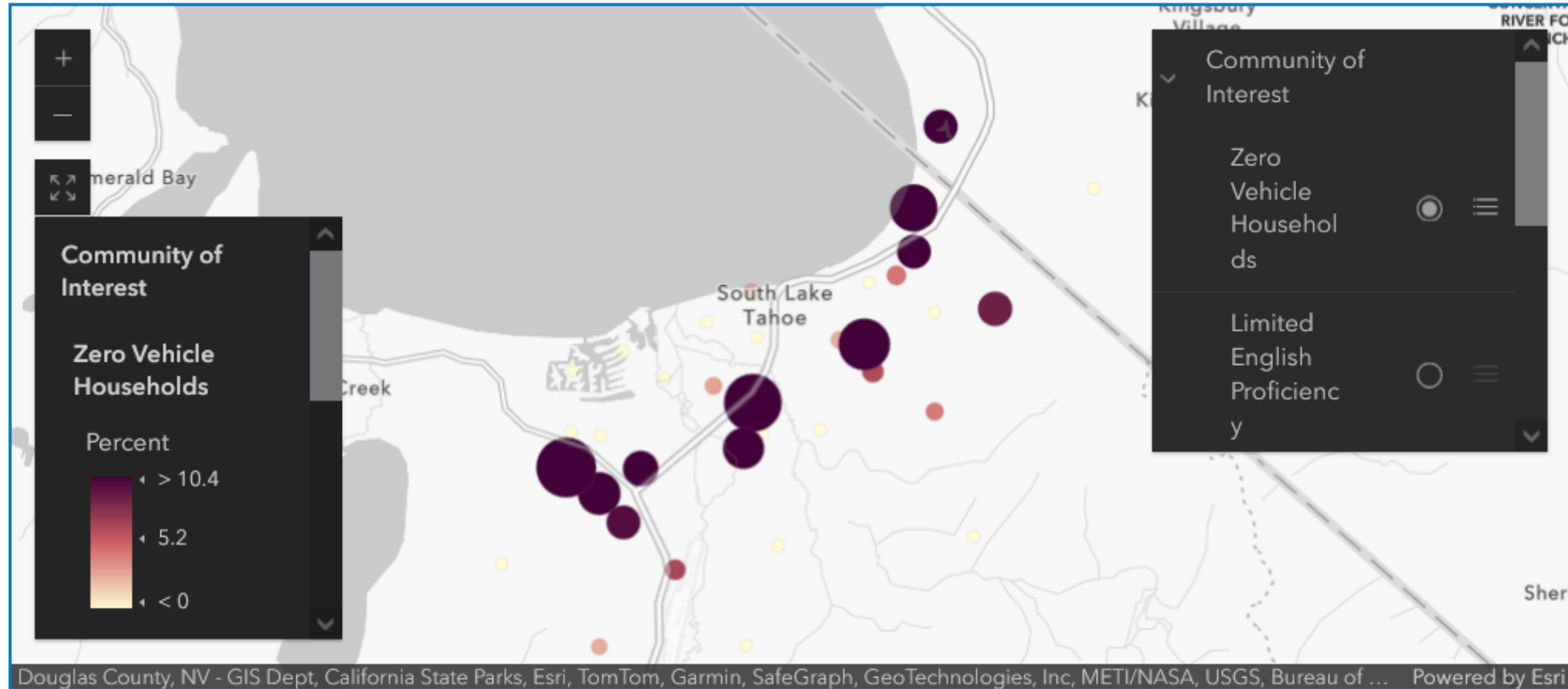
Economic Resilience



Wildfire Resilience



Equitable Protection



Project Next Steps

- Utilize in presentations and grant applications
- Continue to garner feedback
- Update and maintain over time
- Continue to promote to the public and partners



Questions or Comments?

<https://climate.laketahoeinfo.org>

Devin Middlebrook

dmiddlebrook@trpa.gov

